



Includes
New VPR Series
Heavy Duty Reels
Specialty Reels
Enclosed Reels
Stainless Steel Reels
Welding Reels
Large Capacity Reels

AERO-MOTIVE®
reels.com

HOSE REELS



Aero-Motive: Fluid power solutions for a full range of industrial applications

Get the power to perform with the most advanced hose reels in the industry. Made with precision mechanical components, Aero-Motive reels are designed to provide top performance, long service life and ease of maintenance. With a huge selection of sizes, styles and related accessories, you get the fluid power solutions you need.

For interactive hose reel selector and the most current information on all Aero-Motive products, visit:

reels.com

Pages 2-4

VPR SERIES GENERAL PURPOSE

All new series delivers high performance at an affordable price. Designed for general and industrial plant use. Low, medium and high pressure models are available. Perfect for production lines, shipping, maintenance applications or field service trucks.



Page 5

DOUBLE GUIDE ARM HOSE REEL

Double sided design and rugged steel construction is ideal for use on service vehicles.



Page 6

HAND CRANK HOSE REELS

Industrial strength reels provide a convenient way to keep floors clear and hoses from getting kinked and tangled.



Ratchet locks are available, see page 22 for details.

For data on pressure loss due to friction refer to page 25.

Consult Aero-Motive for information on other special models not featured in this catalog.

Page 7-10

HEAVY-DUTY REELS

Aluminum housings and steel construction help make these heavy-duty reels perfect for more demanding applications.



Pages 15-17

WELDING HOSE REELS

For handling dual oxygen/acetylene hose. Keeps hose in a neat, safe configuration at all times, increasing the life of the hose.



Page 11

SPECIALTY REELS

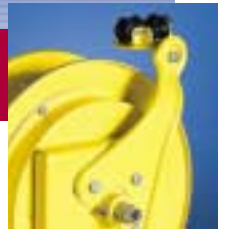
The D8800 spring driven specialty reels are a unique fit for either hydraulic or pneumatic applications, while providing the signature Aero-Motive flexibility and safety of our other reels.



Pages 18-21

LARGE CAPACITY HOSE REELS

Designed to fit your special applications involving oil, water, or grease.



Page 12

ENCLOSED HOSE REELS

Featuring an enclosed design ideal for use in the medical and food handling industries.



Pages 22-24

ACCESSORIES

Pivot Base for directional flexibility, Grips to extend hose life, guides for better hose control.



Pages 13-14

STAINLESS STEEL HOSE REELS

New stainless steel models make it easy to meet the hygienic standards of the food processing industry. Also ideal for use in harsh environments.



Page 25

TECH INFO

Detailed information on friction of materials through hose, hose ratings, and compatibility of various chemicals with hose.

VPR SERIES SPRING DRIVEN

Designed for general and industrial use. Ideal for production lines, material handling equipment, service areas, maintenance applications and service vehicles.

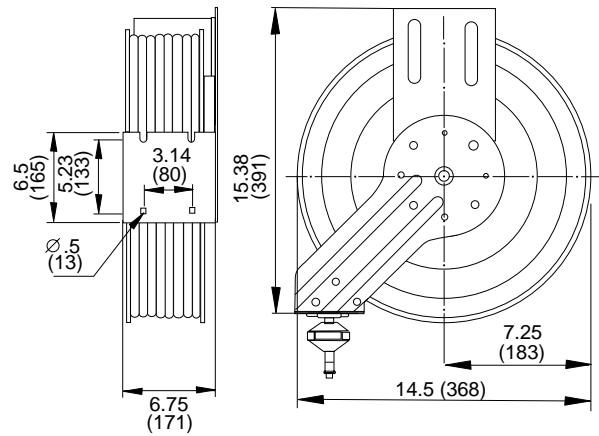
- Steel construction for long life in industrial applications
- Containerized main spring for safe, easy maintenance
- Adjustable guide arm
- Four roller guide to protect hose
- Brass and stainless steel fluid path
- Durable epoxy powder-coat finish
- Ratchet lock and easy tension adjustment
- Hose stop included with all models
- Nitrile seals

DA, MA, HA

Accessories on pages 22 to 24



Model	Hose I.D. inch	Hose I.D. mm	Hose O.D. inch	Hose O.D. mm	Length feet	Length m	Pressure psi	Inlet hose fitting (NPT)
DA230	.25	6.4	.63	16	30	9.1	300	.25
DA330	.38	9.6	.75	19	30	9.1	300	.38
DA300	Without Hose						300	.38
MA230	.25	6.4	.63	16	30	9.1	2000	.25
MA330	.38	9.6	.75	19	30	9.1	2000	.38
MA300	Without Hose						3000	.38
HA230	.25	6.4	.63	16	30	9.1	5000	.25
HA200	Without Hose						5000	.25
HA325	.38	9.6	.75	19	25	7.62	4000	.38
HA300	Without Hose						5000	.38



Hose Specs

Low Pressure (to 300 psi)	Type: EPDM/SBR tube, Red SBR cover Max Temp: 176° F (80°C)
Medium Pressure (to 3000 psi)	Type: SAE 100 R1 TYPE AT Synthetic Rubber tube & cover Max Temp: 212°F (100°C)
High Pressure (to 5000 psi)	Type: SAE 100 R2 TYPE AT Synthetic Rubber tube & cover Max Temp: 212°F (100°C)

Other hose types available, consult factory.

VPR SERIES SPRING DRIVEN

Designed for general and industrial use. Ideal for production lines, material handling equipment, service areas, maintenance applications and service vehicles.

- Steel construction for long life in industrial applications
- Containerized main spring for safe, easy maintenance
- Adjustable guide arm
- Four roller guide to protect hose
- Brass and stainless steel fluid path
- Durable epoxy powder-coat finish
- Ratchet lock and easy tension adjustment
- Hose stop included with all models
- Nitrile seals

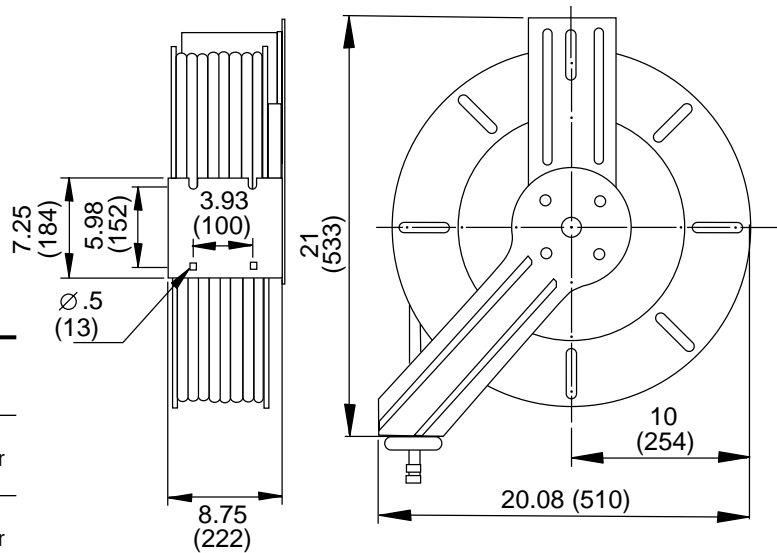


DB, MB, HB

Accessories on pages 22 to 24



Model	Hose I.D.		Hose O.D.		Length		Pressure psi	Inlet hose fitting (NPT)
	inch	mm	inch	mm	feet	m		
DB350	.38	9.6	.75	19.0	50	15.2	300	.38
DB430	.50	12.7	.94	23.8	30	9.1	300	.50
DB450	.50	12.7	.94	23.8	50	15.2	300	.50
DB400	Without Hose						300	.50
MB350	.38	9.6	.75	19.0	50	15.2	2000	.38
MB430	.50	12.7	.94	23.8	30	9.1	2000	.50
MB450	.50	12.7	.94	23.8	50	5.2	2000	.50
MB400	Without Hose						3000	.50
HB250	.25	6.4	.63	16	50	15.2	5000	.25
HB200	Without Hose						5000	.25
HB330	.38	9.6	.75	19.0	30	9.1	4000	.38
HB350	.38	9.6	.75	19.0	50	5.2	4000	.38
HB300	Without Hose						5000	.38



Hose Specs	
Low Pressure (to 300 psi)	Type: EPDM/SBR tube, Red SBR cover Max Temp: 176° F (80°C)
Medium Pressure (to 3000 psi)	Type: SAE 100 R1 TYPE AT Synthetic Rubber tube & cover Max Temp: 212°F (100°C)
High Pressure (to 5000 psi)	Type: SAE 100 R2 TYPE AT Synthetic Rubber tube & cover Max Temp: 212°F (100°C)

Other hose types available, consult factory.

VPR SERIES SPRING DRIVEN

Designed for general and industrial use. Ideal for production lines, material handling equipment, service areas, maintenance applications and service vehicles.

- Steel construction for long life in industrial applications
- Containerized main spring for safe, easy maintenance
- Adjustable guide arm
- Four roller guide to protect hose
- Brass and stainless steel fluid path
- Durable epoxy powder-coat finish
- Ratchet lock and easy tension adjustment
- Hose stop included with all models
- Nitrile seals

DC SERIES

Accessories on pages 22 to 24

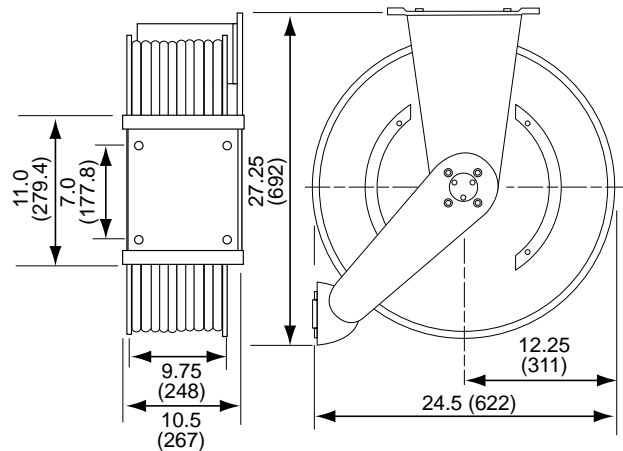


Model	Hose I.D.		Hose O.D.		Length		Pressure psi	Inlet hose fitting (NPT)
	inch	mm	inch	mm	feet	m		
DC475	.50	12.7	.88	22	75	22.9	300	.50
DC410	.50	12.7	.88	22	100	30.5	300	.50
DC400	Without Hose						300	.50
DC660	.75	19.1	1.25	31.8	60	18.3	300	.75
DC600	Without Hose						300	.75
DC850	1.00	25.4	1.50	38.1	50	15.2	300	1.00
DC800	Without Hose						300	1.00

Hose Specs

Low Pressure (to 300 psi)	Type: EPDM/SBR tube, Red SBR cover Max Temp: 176° F (80°C)
Medium Pressure (to 3000 psi)	Type: SAE 100 R1 TYPE AT Synthetic Rubber tube & cover Max Temp: 212°F (100°C)
High Pressure (to 5000 psi)	Type: SAE 100 R2 TYPE AT Synthetic Rubber tube & cover Max Temp: 212°F (100°C)

Other hose types available, consult factory.

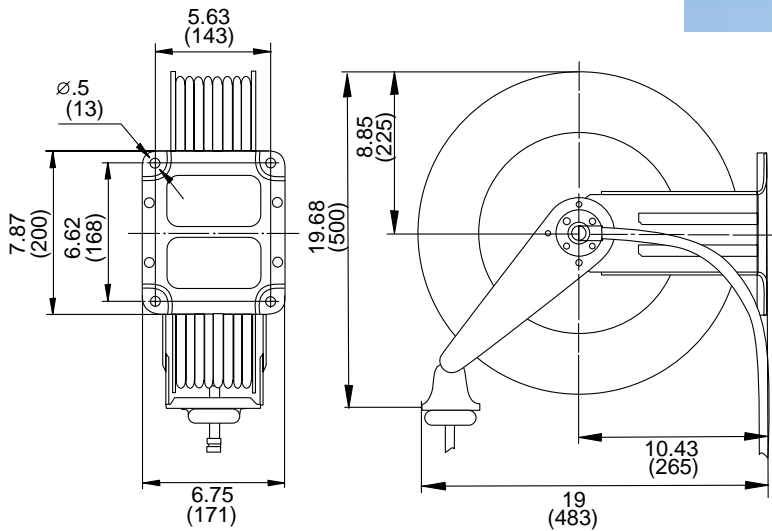


VPR SERIES- DOUBLE GUIDE ARM

Rugged steel construction hose reel designed for applications subject to heavy use and shock loads. Ideal for vehicles such as service trucks.

- Steel construction for long life in industrial applications
- Containerized main spring for safe, easy maintenance
- Adjustable guide arm
- Four roller guide to protect hose
- Brass and stainless steel fluid path
- Durable epoxy powder-coat finish
- Ratchet lock and easy tension adjustment
- Hose stops included for all models
- Nitrile seals

TL, TM, TH



Note: Hose attachment on reel drum requires female NPSM swivel fitting.

Hose Specs		Hose I.D.		Hose O.D.		Length		Pressure	Inlet hose	
		inch	mm	inch	mm	feet	m	psi	fitting(NPT)	
Low Pressure (to 300 psi)	Type: EPDM/SBR tube, Red SBR cover Max Temp: 176° F (80°C)	TL330	.38	9.6	.75	19.0	30	9.1	300	.38
		TL350	.38	9.6	.75	19.0	50	15.2	300	.38
		TL430	.50	12.7	.94	23.8	30	9.1	300	.50
		TL450	.50	12.7	.94	23.8	50	15.2	300	.50
		TL400		Without Hose					300	.50
Medium Pressure (to 3000 psi)	Type: SAE 100 R1 TYPE AT Synthetic Rubber tube & cover Max Temp: 212°F (100°C)	TM330	.38	9.6	.75	19.0	30	9.1	2000	.38
		TM350	.38	9.6	.75	19.0	50	15.2	2000	.38
		TM430	.50	12.7	.94	23.8	30	9.1	2000	.50
		TM450	.50	12.7	.94	23.8	50	15.2	2000	.50
		TM400		Without Hose					3000	.50
High Pressure (to 5000 psi)	Type: SAE 100 R2 TYPE AT Synthetic Rubber tube & cover Max Temp: 212°F (100°C)	TH230	.25	6.4	.63	16	30	9.1	5000	.25
		TH250	.25	6.4	.63	16	50	5.2	5000	.25
		TH200		Without Hose					5000	.25
		TH330	.38	9.6	.75	19.0	30	9.1	4000	.38
		TH350	.38	9.6	.75	19.0	50	5.2	4000	.38
		TH300		Without Hose					4000	.38

Other hose types available, consult factory.

VPR HAND CRANK HOSE REELS

Designed for general and industrial use. Ideal for production areas, maintenance & service areas, washdown equipment and service vehicles. Reels do not include hose.

- Heavy steel construction
- Corrosion resistant epoxy powder-coat finish
- Spring tension brake
- Brass fluid path
- Simple mounting for floor, wall or work bench
- Nitrile seals



Reels do not include hose.

CL & CH



Low Pressure (300 psi)

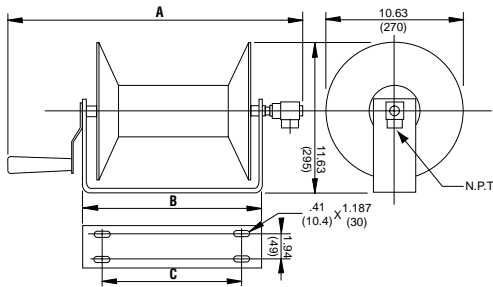
Model	Hose I.D. inch	Hose I.D. mm	Hose O.D. inch	Hose O.D. mm	Capacity feet	Capacity m	Inlet hose fitting (NPT)
CL102	.25	6.4	.63	15.9	100	30.4	.25
CL202	.25	6.4	.63	15.9	200	60.8	.25
CL103	.38	9.6	.75	19.0	50	15.2	.38
CL203	.38	9.6	.75	19.0	100	30.4	.38

High Pressure (3,000 psi)

Model	Hose I.D. inch	Hose I.D. mm	Hose O.D. inch	Hose O.D. mm	Capacity feet	Capacity m	Inlet hose fitting (NPT)
CH102	.25	6.4	.63	15.9	100	30.4	.25
CH202	.25	6.4	.63	15.9	200	60.8	.25
CH103	.38	9.6	.75	19.0	50	15.2	.38
CH203	.38	9.6	.75	19.0	100	30.4	.38
CH303	.38	9.6	.75	19.0	350	106.4	.38
CH304	.50	12.7	.88	22.3	270	82.0	.50

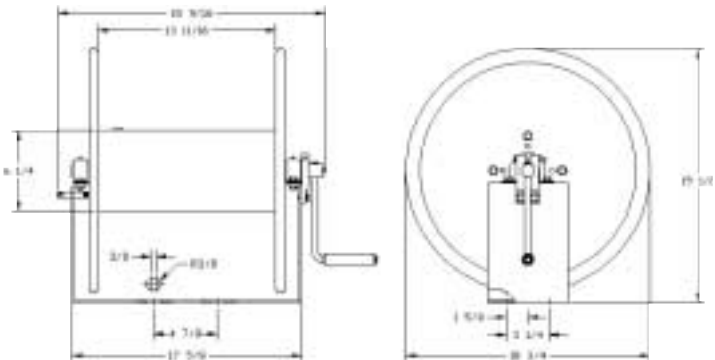
Maximum capacity dimensions listed.

Dimensions: 100 & 200 Models



Model	inches A	mm A	inches B	mm B	inches C	mm C
CL102	18.75	476	9.31	236	6.38	162
CH102	18.75	476	9.31	236	6.38	162
CL103	18.75	476	9.31	236	6.38	162
CH103	18.75	476	9.31	236	6.38	162
CL202	22.75	578	13.87	352	10.38	264
CH202	22.75	578	13.87	352	10.38	264
CL203	22.75	578	13.87	352	10.38	264
CH203	22.75	578	13.87	352	10.38	264

Dimensions: 300 Models



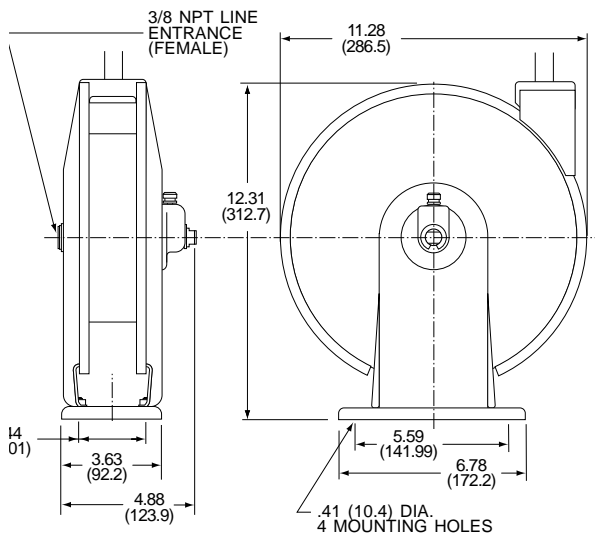
D500 & D600 Hose Reels

Designed for general and industrial plant use. Perfect for production lines, shipping areas, maintenance applications or field service trucks.

- Steel construction for long life
- Containerized mainspring for safe, easy maintenance
- Adjustable guides and stops
- Viton seals with full-flow bronze swivel provide unrestricted circulation
- Ratchet lock and easy tension adjustment
- Hose stops on all models



D 5 0 0

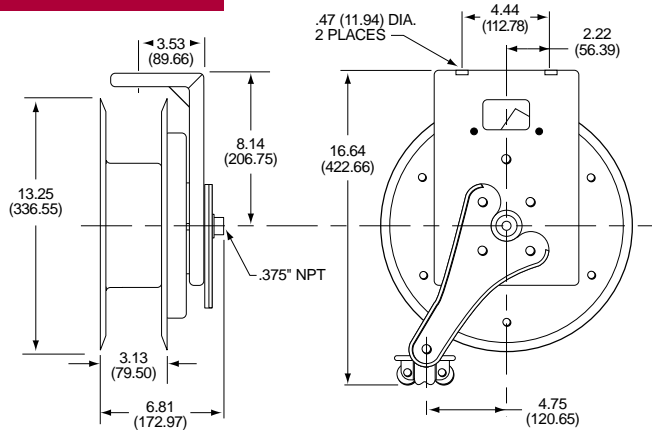


Model*	ID Hose size		OD Hose size		length	
	in.	mm	in.	mm	ft.	m
D522A	.25	6.4	.63	16	25	7.62
D513A	.38	9.7	.688	17.5	15	4.57

*Available with swing mount; to order, add suffix "S" to model number.

Reel complete with hose
 Dimensions shown in decimal inches and (millimeters)
 When dimensions are critical, request a certified print
 Model selection charts, p. 21. Accessories, p. 22-24.

D 6 0 0



Model	ID Hose size		OD Hose size		length	
	in.	mm	in.	mm	ft.	m
D625A	.25	6.4	.63	16	50	15.2
D633A	.38	9.7	.75	19	35	10.7
D634A*	.38	9.7	.688	17.5	45	13.7
D620A	w i t h o u t h o s e					

*Air service only.
 Rated 300 psi without hose
 Dimensions shown in decimal inches and (millimeters)
 When dimensions are critical, request a certified print
 Model selection charts, p. 21. Accessories, p. 22-24.

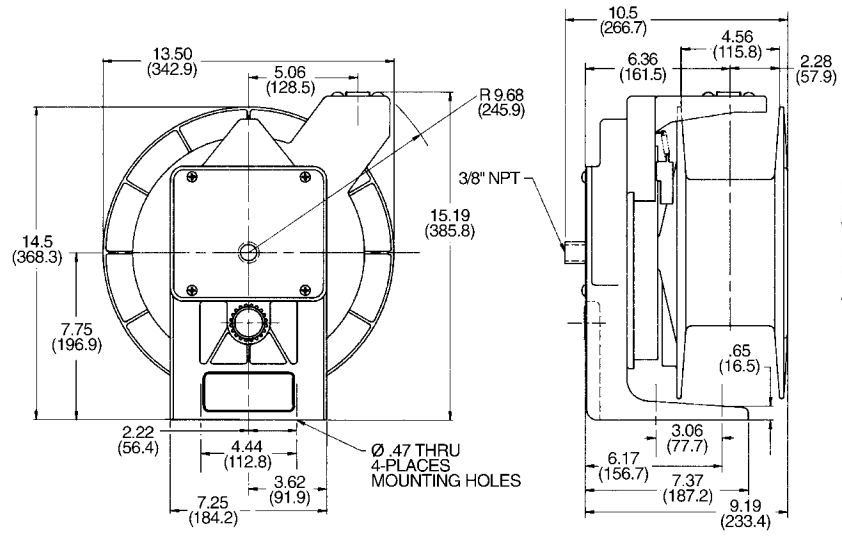
Aluminum & Lead Free Hose Reels

D650 corrosion resistant reels hold up to 50 feet of hose. D650SS series features a lead-free fluid path suitable for food handling, processing, and pharmaceutical applications.

- Heavy duty aluminum housing for years of rust free service
- Containerized mainspring for safe, easy maintenance
- Anti lock-out ratchet system prevents reel lock up when hose is fully extended
- Adjustable hose guide ensures smooth payout and retrieval
- FDA approved seals on D650SS reels provide extra assurance in food & drug applications
- Hose stop included with models D653-D657
- PVC hose with Nitrile seals



D 650, D 650SS



Reel complete with hose as noted
 Dimensions shown in decimal inches and (millimeters)
 When dimensions are critical, request a certified print
 Model selection charts, p. 21.
 Accessories, p. 22-24.

*Hose capacity: 50 ft. (15.7 m) travel for hand pull-out. 40 ft. (12.6 M) travel for automatic pull-out.

**Hose rated for 200 PSI, reel rated for 300 PSI

***Inlet shaft on D657 is 3/8" NPT

Regular Model	Lead-Free Model	Hose	ID Hose size in.	mm	OD Hose size in.	mm	length ft.	m	PSI**
D651	D651SS	none	.25	6.4	.63	16	*		300
D652	D652SS	none	.38	9.7	.75	19	*		300
D653	D653SS	incl.	.25	6.4	.63	16	35	10.7	200
D654	D654SS	incl.	.25	6.4	.63	16	50	15.7	200
D655	D655SS	incl.	.38	9.7	.75	19	35	10.7	200
D656	D656SS	incl.	.38	9.7	.75	19	50	15.7	200
D657***	D657SS	incl.	.50	12.7	.93	23	25	17.6	200

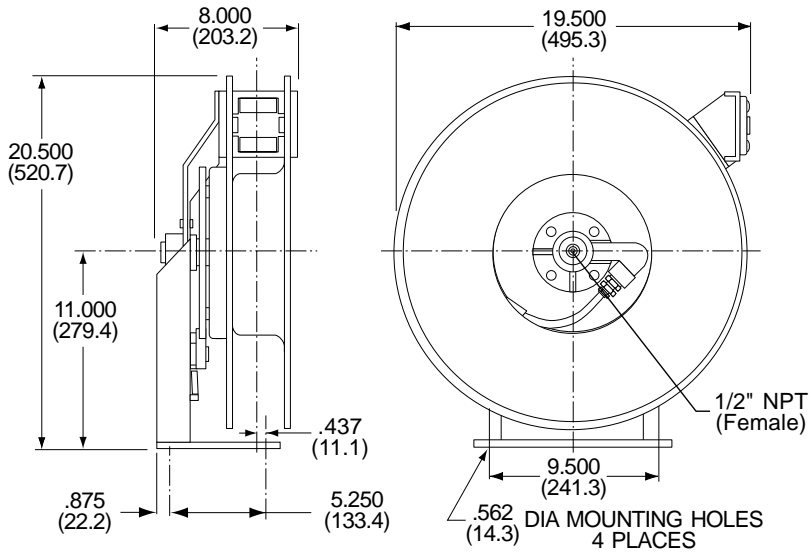
D700 Spring Driven Hose Reels

Series D700 hose reels are designed for both hydraulic and pneumatic applications.

- Steel construction for long life
- Stainless steel mainshaft
- Containerized mainspring for safe and easy maintenance
- Viton seals with full-flow bronze swivel for unrestricted circulation
- PVC hose and hose stops included on models D735-D745



D 7 0 0



Model	ID Hose size		OD Hose size		length	
	in.	mm	in.	mm	ft.	m
D735	.38	9.7	.75	19	50	15.3
D742	.50	12.7	.94	24	25	7.6
D745*	.50	12.7	.94	24	50	15.3
D730	without hose					

Rated 300 psi without hose / rated 200 psi with hose

*Air service only.

Reel complete with hose. Dimensions shown in decimal inches and (millimeters). When dimensions are critical, request a certified print Model selection charts, p. 21. Accessories, p. 22-24.

Medium & High Pressure Single Hose Reels

Safe Handling Of Your High Pressure Application

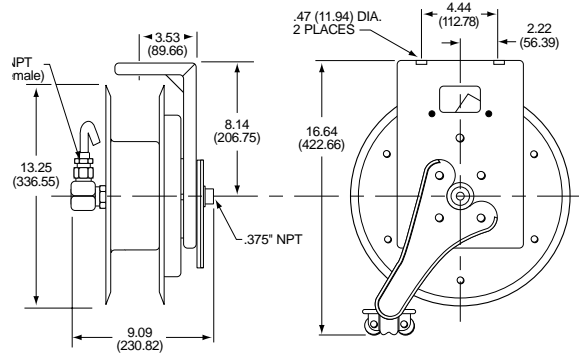
Aero-Motive Medium and High Pressure Hose Reels are designed to fit your special applications involving oil, water, or grease.

- Series "M" designed to handle hose conforming to SAE 100R1 or SAE 100R7 at a maximum pressure rating on the reel of 3000 psi
- Series "H" based on 1/4" I.D. hose conforming to SAE 100R2 with a rating on the reel of 9000 psi
- Permanent lubrication ensures smooth operation
- Simple tension adjustment

- Steel construction for long life
- Containerized mainspring for safe, easy maintenance
- Nitrile seals
- Ratchet lock
- Adjustable hose guides

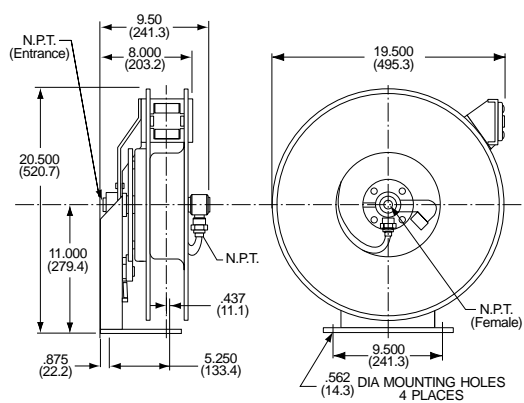
M 600 & H 600

Hose not included
Selection chart, see below.
Accessories, see p. 22-24.
Dimensions shown in decimal inches and (millimeters)
When dimensions are critical, request a certified print



M 700 & H 700

Model	NPT Female	NPT Line Entrance
M620	.25 in.	.375 in.
M630	.375 in.	.375 in.
H620	.25 in.	.25 in.
M730	.375 in.	.375 in.
M740	.50 in.	.50 in.
H720	.25 in.	.25 in.



Single Hose/Medium Pressure selection chart

Hose I.D. (inches)	20 ft. 6.1 m Active Hose	30 ft. 9.1 m Active Hose	40 ft. 12.2 m Active Hose	50 ft. 15.2 m Active Hose
.250	M620	M620	M620	M620
.375	M630	M630	M730	M730
.500	M740	M740	D8140*	D8140*

The above capacities are based on SAE 100R1 or SAE 100R7 type hose. Max. pressure on reel without hose is rated at 3000 PSI.

Single Hose / High Pressure selection chart

Model	Hose Capacity ft.	m
H620	25	7.6
H720	50	15.2

The above capacities are based on SAE 100R2 type hose. Max. pressure on reel without hose is rated at 9000 PSI.

D8800 Spring Driven Reels

The Assurance of Total Safety and Flexibility

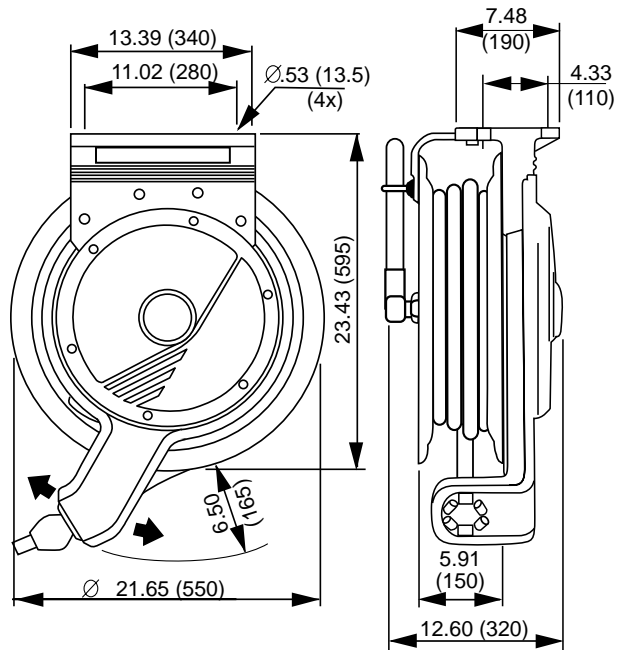
All Aero-Motive series D8800 hose reels are designed for both hydraulic and pneumatic applications.

- Aluminum construction for corrosion resistance and light weight
- Containerized mainspring for safe and simple maintenance
- Adjustable hose guide to pay out and retrieve hose from any direction
- Ratchet lock to stop hose at required length
- Anti lock-out design insures that ratchet will not engage when hose is fully extended
- Permanent lubrication for smooth operation
- Powder coat finish for appearance, corrosion resistance and durability
- For hose rated at 700 psi
- Nitrile seals



Reels do not include hose.

D8800



Model	I.D.		O.D.		Hose Capacity		Inlet Hose Fitting
	In.	mm.	In.	mm	Ft.	M	
D8814	0.25	6.4	0.63	16	60	18.3	.25 NPT
D8814	0.38	9.7	0.75	19	60	18.3	.375 NPT
D8814	0.50	12.7	0.94	24	60	18.3	.5 NPT
D8816	0.75	19.1	1.25	31.8	50	15.2	.75 NPT
D8818	1.0	25.4	1.5	38.1	30	9.1	1.0 NPT
D8824	0.25	6.4	0.63	16	95	24.5	.25 NPT
D8824	0.38	9.7	0.75	19	95	24.5	.375 NPT
D8824	0.50	12.7	0.94	24	95	29.0	.5 NPT

Enclosed VPR Hose Reels

Enclosed VPR hose reels include a brass and stainless steel fluid path, durable steel finish, and ratchet lock. The reels are designed to handle low-pressure hose (300 psi).

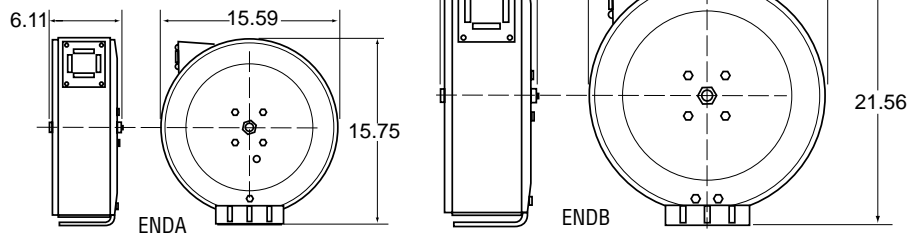
- Durable steel construction
- Containerized mainspring for easy maintenance
- Brass and stainless steel fluid path
- Durable epoxy powder-coat finish
- Ratchet lock



ENDA / ENDB

Model	ID Hose size		OD Hose size		length	
	in.	mm	in.	mm	ft.	m
ENDA325	.38	9.7	.75	19.1	25	7.6
ENDB350	.38	9.7	.75	19.1	50	15.2
ENDB450	.50	12.7	.88	22.3	50	15.2

Stainless steel model available.
See page 13.



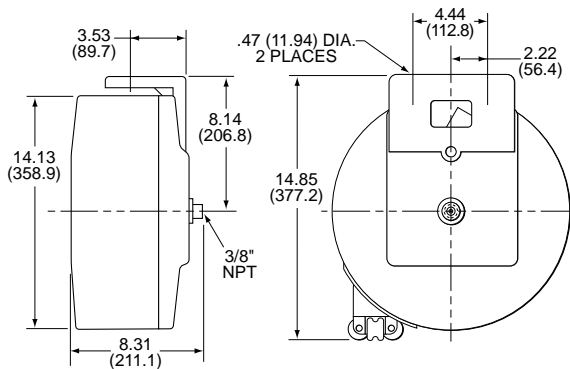
Heavy Duty Enclosed Hose Reels

Designed specifically for use in the food handling and medical industries, these reels increase hose life by as much as three times and promote good hose management.

- Stainless steel mainshaft
- Completely enclosed spool keeps hose secure inside reel
- Lead-free fluid path
- FDA approved seals for added safety in food & drug applications
- PVC Hose with viton seals and hose stops included



ED600



Model	ID Hose size		OD Hose size		length	
	in.	mm	in.	mm	ft.	m
ED625A	.25	6.4	.63	16	50	15.2
ED633A	.38	9.7	.688	17.5	35	9.1

Rated 200 psi with hose

Reel complete with hose
Dimensions shown in decimal inches and (millimeters)
When dimensions are critical, request a certified print
Model selection charts, p. 21. Accessories, p. 22-24.

VPR Stainless Steel Hose Reels

Designed for use in food processing, chemical handling, industries, also harsh environments, such as marine applications. Reels do not include hose.

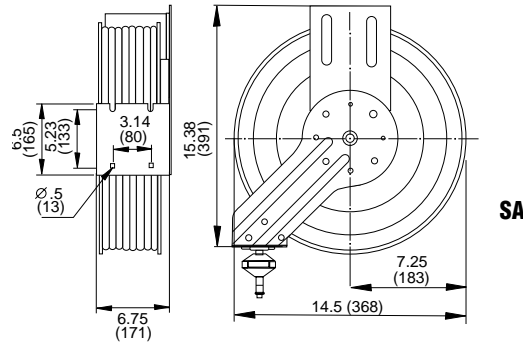
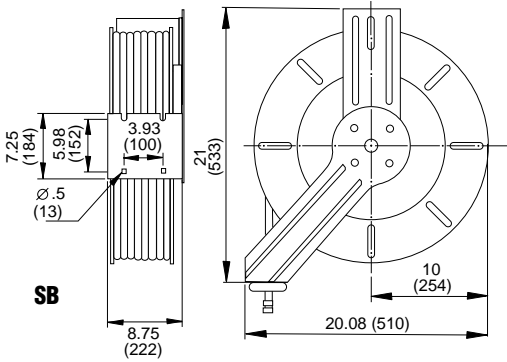
- Stainless steel construction
- Containerized main spring for safe, easy maintenance
- Adjustable guide arm
- Four roller guide to protect hose
- Stainless steel fluid path
- Ratchet lock and easy tension adjustment
- Nitrile seals
- Hose stop included on all models



Reels do not include hose

SA, SB

Model	Hose I.D.		Hose O.D.		Capacity		Pressure
	inch	mm	inch	mm	feet	m	psi
SA300	.25	6.4	.63	16	30	9.1	up to 300
SA300	.38	9.6	.75	19	30	9.1	up to 300
SB400	.38	9.6	.75	19	50	15.2	up to 300
SB400	.50	12.7	.94	24	50	15.2	up to 300

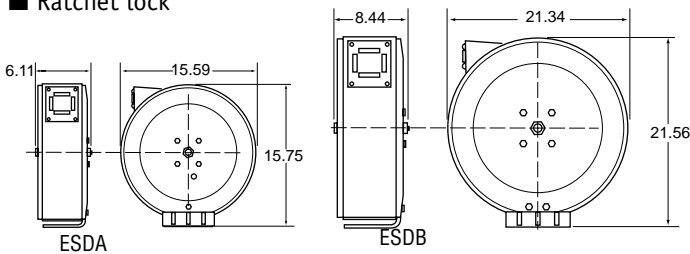


ESDA /ESDB

Enclosed Stainless Steel Reels

Enclosed VPR hose reels include a brass and stainless steel fluid path, durable steel finish, and ratchet lock. The reels are designed to handle low-pressure hose (300 psi).

- Durable stainless steel construction
- Containerized mainspring for easy maintenance
- Brass and stainless steel fluid path
- Durable epoxy powder-coat finish
- Ratchet lock



Model	ID Hose size		OD Hose size		length	
	in.	mm	in.	mm	ft.	m
ESDA325	.38	9.7	.75	19.1	25	7.6
ESDB350	.38	9.7	.75	19.1	50	15.2
ESDB450	.50	12.7	.88	22.3	50	15.2

High Performance Stainless Steel Hose Reels

Meet the stringent hygienic requirements of European norm EN 1672-2.

Designed for use in food processing, chemical handling industries, also harsh environments, such as marine applications. Reels do not include hose.

- Stainless Steel construction.
- Containerized main spring for safe, easy maintenance.
- Four roller guide to protect hose.
- Stainless steel fluid path.
- Ratchet lock and easy tension adjustment
- Easy to clean and service.
- Nitrile seals
- Hose stop included on all models



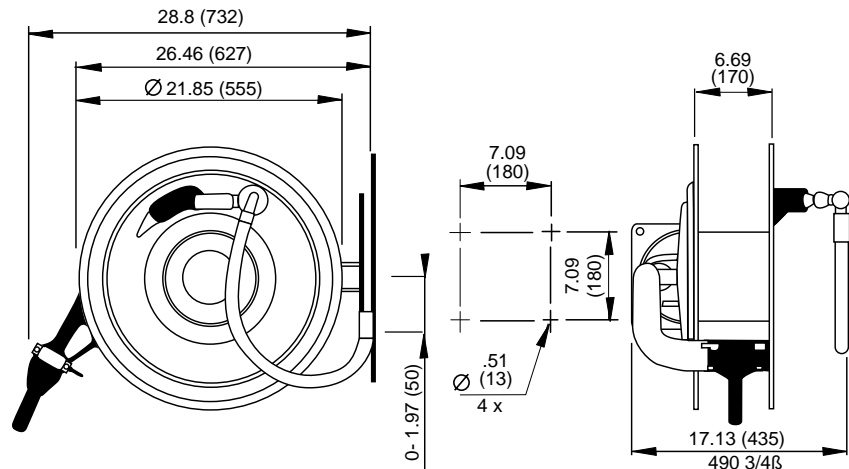
Reels do not include hose

SN

Designed with a minimum of joints and with all surfaces smooth and sloping (in accordance with European norm EN 1672-2). Regarded as a piece of food processing equipment, SN Series meets all known hygienic demands from the food processing industry.



Model	Hose I.D.		Hose O.D.		Length		Pressure psi	Inlet hose fitting
	inch	mm	inch	mm	feet	m		
SN400	.50	12.7	.94	24	75	22.8	up to 300	.50 NPT
SN600	.75	19.0	1.25	31.7	50	15.2	up to 300	.75 NPT



VPR Welding Hose Reels

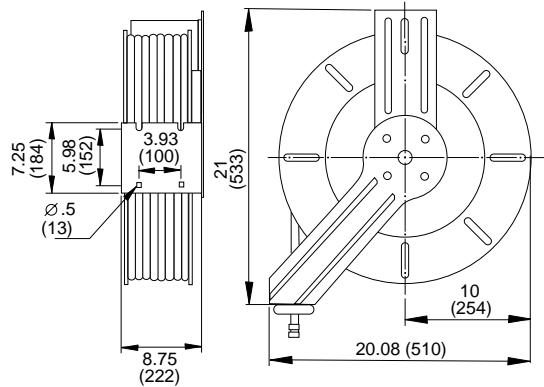
WB Series

Designed for general and industrial Oxygen/Acetylene welding. Ideal for production lines, material handling equipment, service areas, maintenance applications and service vehicles.

- Steel construction for long life in industrial applications
- Containerized main spring for safe, easy maintenance
- Adjustable guide arm for wall, ceiling, or truck mount
- Four roller guide to protect hoses
- UL listed for oxygen/acetylene, mapp gas, propane, natural gas (without hose)
- Forged brass fluid path with fluorocarbon seals
- Durable epoxy powder-coat finish
- Ratchet lock and easy tension adjustment
- Hose stop included with all models
- Lead-in hose included

Hose Features:

- Rubber core, rubber cover
- 200 psi working pressure
- -25°C (-13°F) to 70°C (158°F)
- Rated for oxygen/acetylene only
- Consult factory for other optional hose types



Model	Hose I.D. inch	Hose I.D. mm	Hose O.D. inch	Hose O.D. mm	Length feet	Length m	Pressure psi	Hose inlet fitting NPT
WB230	.25	6.4	.63	16	30	9.1	200	.25
WB250	.25	6.4	.63	16	50	15.2	200	.25
WB265	.25	6.4	.63	16	65	19.8	200	.25
WB200	Without Hose						200	.25

Oxygen/Acetylene Welding Hose Reels selection chart

Model	HOSE CAPACITY Manual				Hose
	3/8" I.D.		1/4" I.D.		
	ft.	m	ft.	m	
D60A00A			25	7.6	none
D70A00A	35	10.7	50	15.3	none
T80A00	60	18.3	80	24.4	none
120AM2	80	24.4	100	30.5	none
140AM2	100	30.5	150	45.8	none
120AM3	80	24.4	100	30.5	included
140AM3	100	30.5	150	45.8	included
WB230			30	9.1	included
WB250			50	15.2	included
WB265			65	19.8	included



Dual hose comprises two standard 1/4" I.D. x 17/32" O.D. hoses molded as a pair approximately 17/32" x 1 1/8" wide. Lead-in hose is provided for models which include hose.

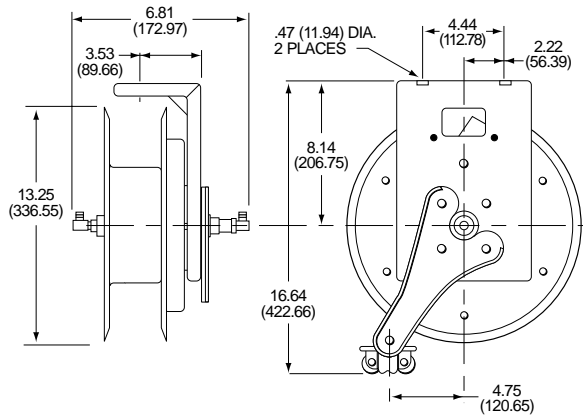
Heavy Duty Welding Hose Reels

Tough, Rugged, and Dependable

Aero-Motive heavy duty welding reels are designed for handling dual oxygen/acetylene hose. Ideal for steel mills, automotive plants, fabrication shops, industrial plants, and repair shops.

- Steel construction for long life
- Containerized mainspring for safe, easy maintenance
- Adjustable guides and stops allow you to “custom fit” the reel to your application
- Permanent lubrication ensures smooth operation
- Standard model without hose rated at 300 psi with higher pressures available
- UL listed
- T80A, 120AM, 140AM feature multiple spring motors to accommodate longer lengths

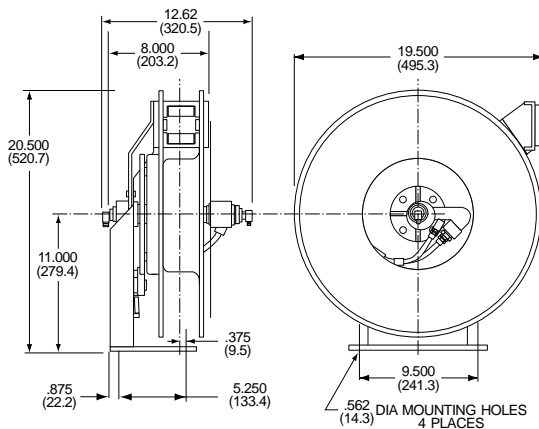
D 60



Accessories, see p. 22-24.
Dimensions shown in decimal inches and (millimeters)
When dimensions are critical, request a certified print

D 70

The D60 and D70 Series are ideal for keeping dual welding hose in a neat and safe configuration at all times. Hose life may be greatly increased.



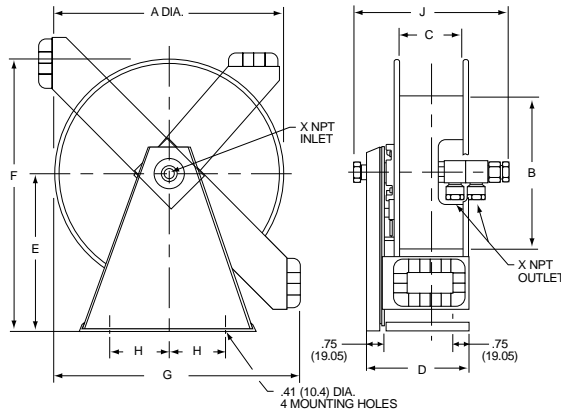
Dual welding hose
not included

To order, see welding hose selection chart below
Dimensions shown in decimal inches and (millimeters)
When dimensions are critical, request a certified print

Accessories, see p. 22-24.

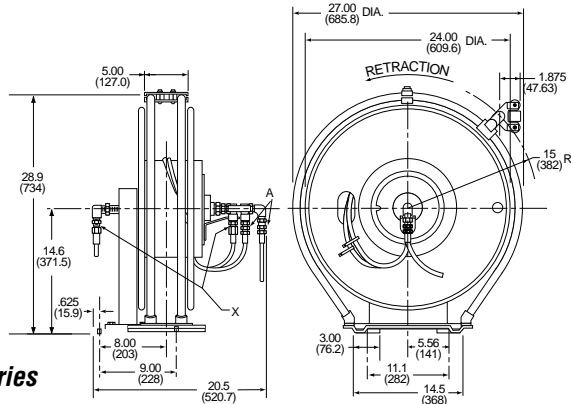
T 80

Dual welding hose not included – to order, see p. 21
 Selection chart, see below
 Accessories, see p. 20-21.
 Dimensions shown in decimal inches and (millimeters)
 When dimensions are critical, request a certified print



120AM 140AM

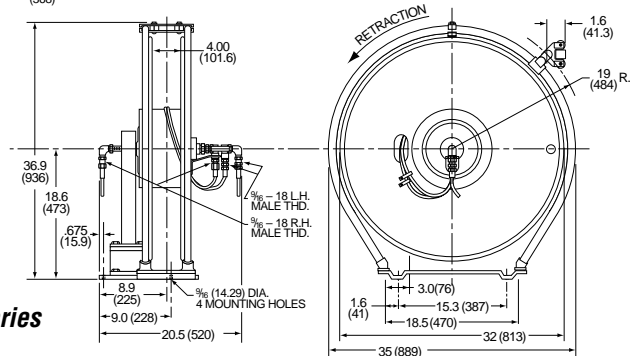
120AM series



Dual welding hose optional - To order, specify "AM3" in model no.

Welding Reel selection chart, see p. 13
 Accessories, see p. 22-24.
 Dimensions shown in decimal inches and (millimeters)
 When dimensions are critical, request a certified print

140AM series



DUAL WELDING HOSE KITS

INSIDE DIAMETER 0.25 in. / 6.4 mm

Catalog No.	Hose Length		Weight	
	ft.	m	lbs.	Kg
H71190011	25	7.62	6.0	2.73
H71190012	50	15.24	10.0	4.56
H71190010	80	24.40	16.0	7.31

INSIDE DIAMETER 0.38 in. / 9.7 mm

Catalog No.	Hose Length		Weight	
	ft.	m	lbs.	Kg
H71190007	75	22.9	25	11.41
H71190008	125	38.1	40	18.26

Kits do not include lead-in hose or stop

Kits include 5 ft. lead-in hose and stop

1100M, 1200M, 1400M, 2300 Spring Driven Hose Reels

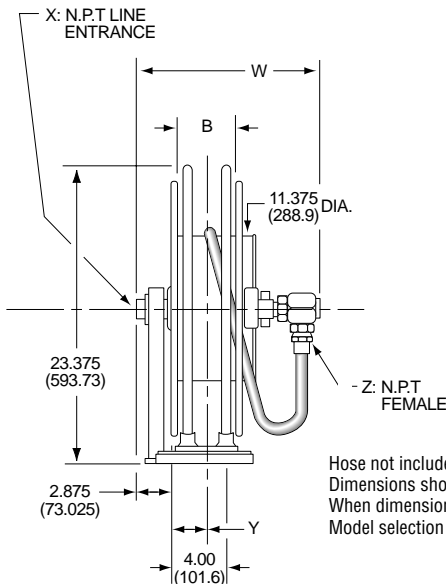
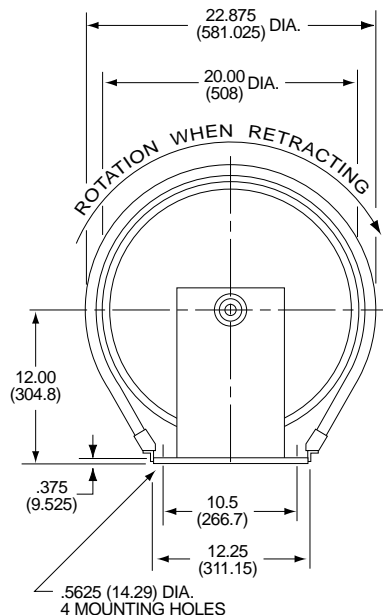
For confidence where extra strength is required

Aero-Motive's spring driven reels are designed for heavy duty air and liquid applications.

- Containerized mainsprings for safe, easy maintenance
- Steel construction for long life
- Automatic declutching spring hubs allow the reel to be reverse wound without spring damage
- Standard models without hose rated at 3000 psi, for higher pressures consult factory
- See Selection Chart p. 21



1100M



Hose not included
Dimensions shown in decimal inches and (millimeters)
When dimensions are critical, request a certified print
Model selection charts, p. 21. Accessories, p. 22-24.

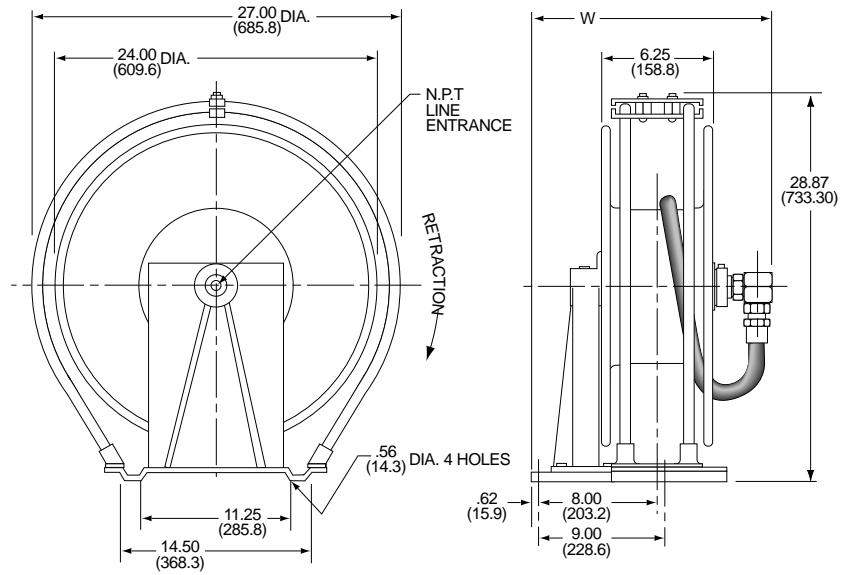
Options & Accessories:
Hose, page 23.
Four Roller Hose guide, page 22
Pivot Base, page 23.
Ratchet Lock: add suffix -L to number

Model	Dim.B		Dim.W		Dim.Y		NPT (in.)	
	in.	mm	in.	mm	in.	mm	Line Ent.	Female
1142-xx-002	4.25	108	13.50	343	2.25	54	1.00	.25
1142-xx-003	4.25	108	13.38	340	2.25	54	1.00	0.38
1142-xx-004	4.25	108	13.38	340	2.25	54	1.00	0.50
1143-xx-002	4.44	113	15.76	400	2.31	56	1.00	0.25
1163-xx-002	6.44	164	15.76	400	3.31	82	1.00	0.25
1163-xx-003	6.44	164	15.76	397	3.31	82	1.00	0.38
1163-xx-003	6.44	164	15.64	397	3.31	82	1.00	0.50
1163-xx-006	6.44	164	15.64	397	3.31	82	1.00	0.75
1164-xx-002	6.63	168	17.98	457	3.43	84	1.00	0.25

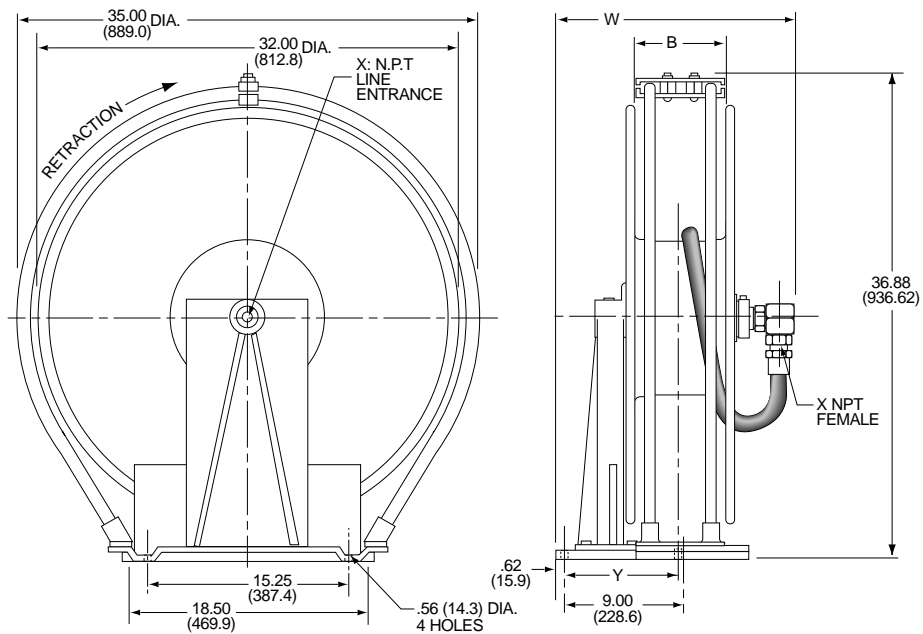
1200 M

Hose not included
 Dimensions shown in decimal inches and (millimeters)
 When dimensions are critical, request a certified print
 Model selection charts, p. 21. Accessories, p. 22-24.

Model	Dim.W in. mm	Dim.X, in. NPT Line Ent. Female
1253-xx-003	17.80 452	1.00 0.38
1253-xx-004	17.80 452	1.00 0.50
1253-xx-006	17.80 452	1.00 0.75
1253-xx-008	17.80 452	1.00 1.00
1255-xx-002	21.87 555	1.00 0.25
1255-xx-003	22.25 565	1.00 0.38



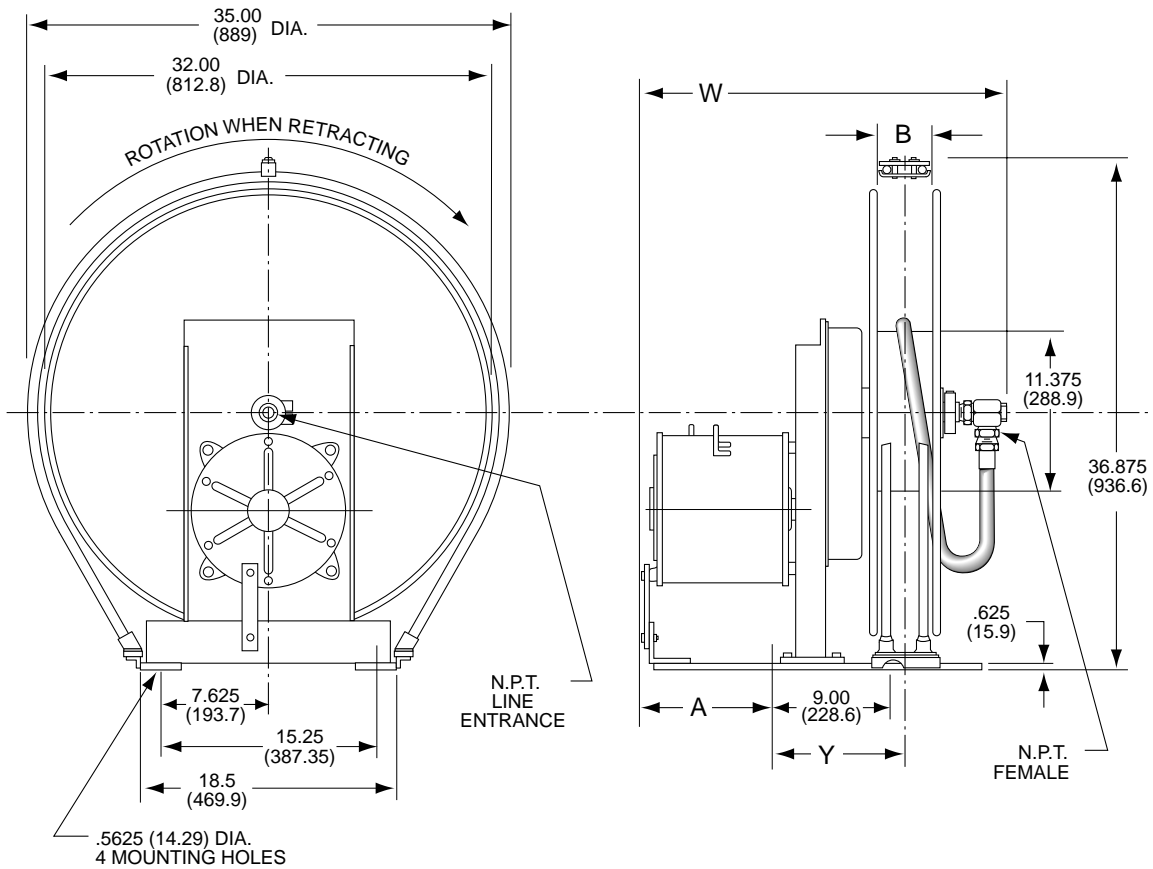
1400 M



Model	Dim.B in. mm	Dim.W in. mm	Dim.Y in. mm	Dim.X, in. NPT Line Ent. Female
1443-xx-004	4.00 102	17.42 442	7.88 200	1.00 0.50
1443-xx-006	4.00 102	17.80 442	7.88 200	1.00 0.75
1443-xx-008	4.00 102	17.80 442	7.88 200	1.00 1.00
1445-xx-004	4.00 102	21.87 555	7.88 200	1.00 0.50
1445-xx-006	4.00 102	22.25 565	9.38 239	1.00 0.75
1445-xx-008	4.00 102	22.25 565	9.38 239	1.00 1.00
1475-xx-006	7.00 178	22.25 565	6.75 171	1.00 0.75
1475-xx-008	7.00 178	22.25 565	6.75 171	1.00 1.00

Hose not included
 Dimensions shown in decimal inches and (millimeters)
 When dimensions are critical, request a certified print
 Model selection charts, p. 21. Accessories, p. 22-24.

2300



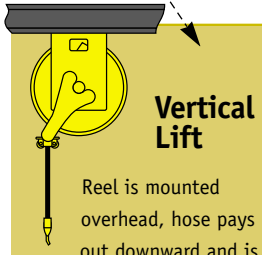
Hose not included
 Dimensions shown in decimal inches and (millimeters)
 When dimensions are critical, request a certified print
 Model selection charts, p. 21. Accessories, p. 22-24.

Model	Dim.A		Dim.B		Dim.W		Dim.Y		NPT (in.)	
	in.	mm	in.	mm	in.	mm	in.	mm	Line Ent.	Female
2343-xx-008	6.75	172	4.00	102	24.00	609	9.25	235	1.00	1.00
2344-xx-006	8.88	226	4.00	102	26.13	664	9.25	235	0.75	0.75
2346-xx-004	13.25	337	4.00	102	30.25	786	9.25	235	0.50	0.50
2374-xx-008	8.88	226	7.00	178	30.13	765	10.75	273	1.00	1.00
2375-xx-006	11.12	283	7.00	178	32.37	822	10.75	273	0.75	0.75
2375-xx-008	11.12	283	7.00	178	32.37	822	10.75	273	1.00	1.00
2376-xx-006	13.25	337	7.00	178	34.50	876	10.75	273	0.75	0.75
2376-xx-008	13.25	337	7.00	178	34.50	876	10.75	273	1.00	1.00
2377-xx-006	15.38	391	7.00	178	71.13	1806	10.75	273	0.75	0.75
2377-xx-008	15.38	391	7.00	178	71.13	1806	10.75	273	1.00	1.00
2378-xx-006	17.63	448	7.00	178	38.80	986	10.75	273	0.75	0.75
2378-xx-008	17.63	448	7.00	178	38.80	986	10.75	273	1.00	1.00
2370-xx-006	21.88	556	7.00	178	43.13	1096	10.75	273	0.75	0.75
2370-xx-008	21.88	556	7.00	178	43.13	1096	10.75	273	1.00	1.00

Hose not included on reels on this page
 Dimensions shown in decimal inches and (millimeters)
 When dimensions are critical, request a certified print
 Model selection charts, p. 21. Accessories, p. 22-24.

Fluid & Air Service selection chart

Application
Inside Diameter of Hose
Length of Hose (feet, meters)

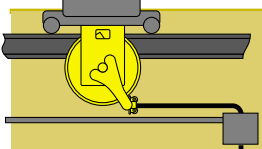


Vertical Lift

Reel is mounted overhead, hose pays out downward and is retracted upward by spring power. Reel must have adequate tension to lift total weight of hose and fluid *plus any extra weight* attached to the hose.

Hose I.D.	20 ft. 6.1 m	25 ft. 7.6 m	30 ft. 9.15 m	35 ft. 10.7 m	40 ft. 12.2 m	45 ft. 13.7 m	50 ft. 15.25 m
.250							
.375							
.500				1142-10-004	1142-10-004	1142-10-004	1142-10-004
.750	1163-16-006	1163-16-006	1163-16-006	1253-16-006	1253-05-006	1253-05-006	1253-05-006
1.000	1253-10-008	1253-16-008	1253-05-008	1253-05-008	1443-05-008	1443-17-008	

Hose I.D.	60 ft. 18.3 m	70 ft. 21.3 m	80 ft. 24.4 m	90 ft. 27.4 m	100 ft. 30.5 m	110 ft. 33.5 m	120 ft. 36.6 m
.250	1142-10-002	1142-10-002	1142-10-002	1143-10-002	1143-10-002	1164-16-002	1164-16-002
.375	1142-10-003	1142-10-003	1163-16-003	1163-16-003	1255-05-003	1255-05-003	1255-05-003
.500	1163-16-004	1253-05-004	1253-05-004	1253-05-004	1445-17-004	1445-17-004	
.750	1253-17-006						




Recovery (Pickup, Retrieve)

Mounted on a moving carrier, reel picks up hose from a stationary base. The closer the reel is to the surface, the less tension is required.

Hose I.D.	20 ft. 6.1 m	30 ft. 9.15 m	40 ft. 12.2 m	50 ft. 15.25 m	60 ft. 18.3 m	70 ft. 21.35 m	80 ft. 24.4 m
.250					1142-10-002	1142-10-002	1142-10-002
.375					1142-10-003	1142-10-003	1163-16-003
.500					1163-16-004	1253-10-004	1253-10-004
.750	1163-16-006	1163-16-006	1253-10-006	1253-10-006	1253-10-006	1443-16-006	1443-16-006
1.000	1253-10-008	1253-16-008	1443-05-008	1443-05-008	1443-05-008	1475-05-008	1475-05-008

Hose I.D.	90 ft. 27.45 m	100 ft. 30.5 m	110 ft. 33.5 m	120 ft. 36.6 m	130 ft. 39.6 m	140 ft. 42.7 m	150 ft. 45.7 m
.250	1143-10-002	1143-10-002	1163-10-002	1163-10-002	1255-10-002	1255-10-002	1255-10-002
.375	1163-16-003	1253-10-003	1253-10-003	1253-10-003	1255-10-003	1255-10-003	1255-10-003
.500	1253-10-004	1443-10-004	1443-10-004	1443-10-004	1443-10-004	1445-10-004	1445-10-004
.750	1475-16-006	1475-16-006	1475-16-006	1475-16-006	1475-16-006		
1.000	1475-16-008	1475-16-008					

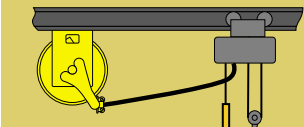


Manual Drag

Hose is dragged manually over surface to and from stationary reel. When hose is dragged automatically by machine, use Vertical Lift charts.

Hose I.D.	20 ft. 6.1 m	25 ft. 7.6 m	30 ft. 9.1 m	35 ft. 10.7 m	40 ft. 12.2 m	45 ft. 13.7 m	50 ft. 15.2 m
.750	1163-10-006L	1163-10-008L	1163-10-006L	1253-10-006L	1253-10-006L	1253-10-006L	1253-10-006L
1.000	1253-10-008L	1253-10-008L	1253-10-008L	1253-10-008L	1443-16-008L	1443-16-008L	1443-10-008L

* L - Suffix is for ratchetlock option, Order roller guide separately



Horizontal Stretch Hose is suspended & supported at both ends. Use the Vertical Lift charts above for Horizontal Stretch applications that can allow a 10% sag.

REEL ORDERING INFORMATION & DIMENSIONS

SERIES	1100M	1200M	1400M	2300
PAGE NO.	18	19	19	20

Accessories

Add functionality to your Aero-Motive reels with hose stops, guides, and extra hose. These accessories can improve hose management and lengthen the life of your hose.

Reel Series	ACCESSORIES					CONSTRUCTION				SPECIFICATIONS			
	Ratchet Lock	Hose Guide	Hose Stop	Pivot Base	Swing Mount	Guide Arm	Guide Rails	Full-Flow Swivel	Basic Material	Max. Lbs. Spring Tension	Lifting Speed, Max. fpm	Weight less hose lbs Kg	
D500A**	Yes	Yes	Yes	PB10YE		No	No	Yes	Steel	10	150	15	6.8
D650	Yes	Yes	Yes	PB2A		Yes	No	Yes	Alum.	24	150	30	13.7
D600A	Yes	Yes	Opt.*ST-1	PB1AYE		Yes	No	Yes	Steel	12	150	20	9.1
ED600A**	Yes	Yes	Yes	No		No	No	Yes	Steel	12	150	25	11.4
D700A	Yes	Yes	Opt.*ST-1	PB3F		Yes	No	Yes	Steel	20	150	60	27.2
1100M	Opt.-L	Opt.	Opt.	PBM3X		No	Yes	Yes	Steel	32-60	150	100	45.4
1200M	Opt.-L	Opt.	Opt.	PBM4A		No	Yes	Yes	Steel	32-60	150	140	63.6
1400M	Opt.-L	Opt.	Opt.	PBM5X		No	Yes	Yes	Steel	32-60	150	147	66.7
2300	Yes	Opt.	Opt.	PBM6X		No	Yes	No	Steel				
DA/MA/HA/SA	Yes	Yes	Yes.	PB201	SB102	Yes	No	Yes	Steel		150	33	15
DB/MB/HB/SB	Yes	Yes	Yes.	PB201	SB101	Yes	No	Yes	Steel		150	51	23
TL/TH/TB	Yes	Yes	Yes.	PB201	SB103	Yes	No	Yes	Steel		150	35	16

All information based on reels less hose

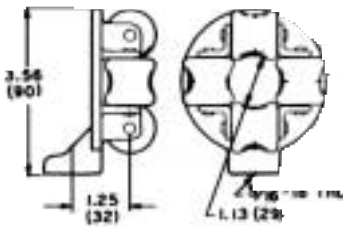
*Include with reels ordered with hose

**Available with hose only.



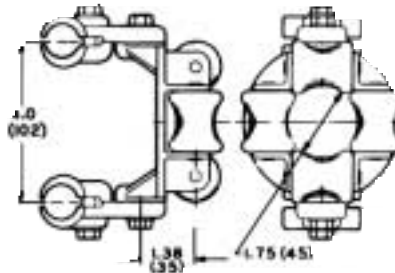
FOUR ROLLER GUIDES

Standard on series D600A, D700, and welding reels. Must be ordered separately on series 1100M, 1200M, and 1400M.



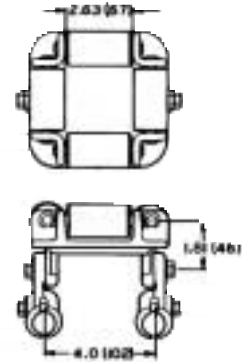
No. 1FYE

For hoses up to 0.88"/22.4 mm OD (Series D600A)



No. 2FMYE

For hoses up to 1.5"/38.1 mm OD (Series 1100M, 1200M, & 1400M)

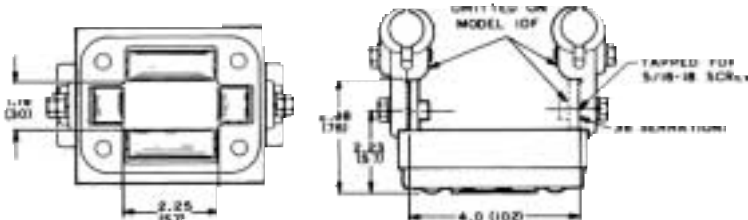


No. 3FMYE

For hoses up to 2"/50.8 mm OD (Series 1100M, 1200M, & 1400M)

FOUR ROLLER GUIDES FOR DUAL HOSE REELS

To be mounted separately.



No. 1DF

Single mounting lug (D60A & D70A)

No. 2DF (shown)

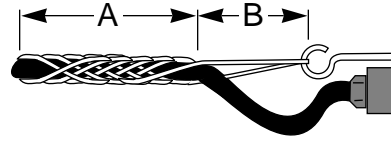
Double mounting lugs (110AM, 120AM & 140AM)

SINGLE EYE HOSE GRIPS

Commonly referred to as "Chinese Fingers" or "Basket Grips." Designed to relieve concentrated strain on hose termination.

Model	Hose Diameter		Dim. A		Dim B		Approx. Break Strength, Lbs.
	In.	mm.	In.	mm	In.	mm	
3712100016	0.62	15.7	6.50	165	7.0	178	1000
3712100018	0.75	19.1	7.25	184	7.0	178	1100
3712100022	1.00	25.4	9.00	299	9.0	229	1500
3712100003	1.25-1.5	31.8-38.1	150	381	15.0	381	2000

Snap hook (Catalog No. 01146P0015) must be ordered separately if desired.



PVC HOSE & FITTINGS

Tube: PVC
 Reinforcement: High Tensile Strength Yarn
 Cover: PVC Compound, Red
 Branding: None required; RMA class B oil resistance
 Working Pressure: 300 psi
 Service Temp: -15°F to 150°F

Size & Type	Hose Part Number	Clamp (2 per hose)	Barb Fitting (2 per hose)	OD	lbs./ft.
.25"ID/PVC	9999902213	01222P0043	00658P0005	.49"	.072
.375"ID/PVC	9999902214	01222P0044	00658P0035	.62"	.096
.5"ID/PVC	9999902215	01222P0045	00658P0030	.77"	.14

RUBBER HOSE & FITTINGS

Tube: NBR blended compound
 Reinforcement: Spiral Polyester cords
 Cover: Red SBR
 Branding: Thermoid Industrial Air; RMA class B oil resistance
 Working Pressure: 200 psi

Size & Type	Hose Part Number	Clamp (2 per hose)	Barb Fitting (2 per hose)	OD
.25"ID/SBR	9999902202	01222P0043	00658P0005	.53"
.375"ID/SBR	9999902204	01222P0015	00658P0035	.70"
.5"ID/SBR	9999902205	01222P0045	00658P0030	.83"
.75"ID/SBR	9999902207	00671P0030	00658P0040	1.19"
1.0"ID/SBR	9999902208	00671P0010	00658P0041	1.50"

HOSE STOP SELECTION

Catalog No.	Capacity Hose Size, In., O.D.	
ST1	.40 to .70	
ST2	.70 to .875	
ST3	1.00	
ST4	1.25	
ST5	1.50	
ST6	2.00	
ST7*	up to 1.50	
ST8**	up to 1.50	
ST22	1/4" I.D. dual welding	

*order C39880210 for undrilled ST7
 **order C39880211 for undrilled ST8

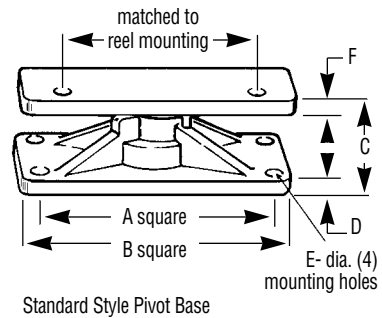
LEAD-IN HOSE (HOSE WHIPS)

Model	Hose I.D.		Length		Description
	in.	mm	ft.	mm	
5383800002	.25	6.4	4	1.2	Single hose
5382100029	.38	9.5	4	1.2	Single hose
5372600025	.50	12.7	4	1.2	Single hose
4437800414	.75	19.1	4	1.2	Single hose
4437800511	1.00	25.4	4	1.2	Single hose
5503800000	.25	6.4	5	1.5	Dual welding reel

PIVOT BASE FOR 330° ROTATION

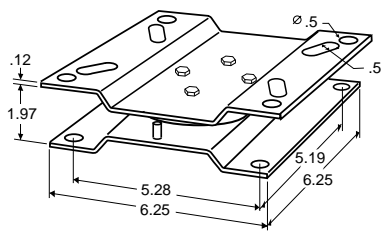
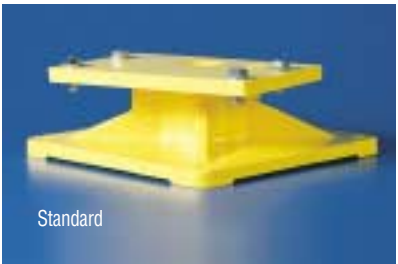
For use with hose reels when less than 330° rotation is required. Four roller guides are required with pivot bases. Specify Reel Catalog number when ordering.

Model	Used with Reel Series	Dim. A		Dim. B		Dim. C		Dim. D		Dim. E		Dim. F	
		in.	mm	in.	mm	in.	mm	in.	mm	in.	mm	in.	mm
PB2A	D650(SS)	3	76	4.0	102	1.44	36.6	.50	13	.44	11	.25	6.4
PB10YE	D500	3	76	4.0	102	2.69	68.3	.50	13	.44	11	1.25	31.8
PB1AYE	D600,D60A	3	76	4.0	102	1.44	36.6	.50	13	.44	11	.25	6.4
PBM3X	1100,110A D700,D70A	10	254	11.5	292	3.76	95.5	.75	19.1	.53	14	.63	15.9
PBM4X	1200, 120A	10	254	11.5	292	3.76	95.5	.75	19.1	.53	14	.63	15.9
PBM5X	1400,140A	10	254	11.5	292	3.76	95.5	.75	19.1	.53	14	.63	15.9
PB201 (VPR)	DA/MA/HA/SA DB/MB/HB/SB TL/TH/TB	See technical drawing below											



Standard Style Pivot Base

"X" indicates variable for specific models.
ED600 cannot be used with Pivot Base.



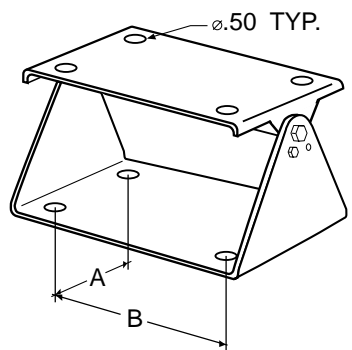
VPR Style Pivot Base

SWING MOUNT

The swing mount is available for VPR style reels and can be ceiling or wall mounted. The additional range of motion provided by the swing mount helps extend hose life and operation efficiency.



Model	Used with Reel Series	Dim. A		Dim. B	
		in.	mm	in.	mm
SB101	DB/MB/HB/SB	3.55	90.2	5.60	142.2
SB102	DA/MA/HA/SA	3.16	80.3	5.25	133.4
SB103	TL/TH/TB	3.55	90.2	5.60	142.2



Hose Characteristics

FRICITION OF AIR IN HOSE

This table may be used to determine the pressure loss in hose connected to pneumatic tools. It is correct for hose with smooth inside lining. Hose with rough lining may have friction loss as much as 50% greater than the figures given below.

Size Of Hose	Gage Pressure at Line(PSI)	Cubic Feet Free Air per minute passing through 50 ft. lengths of Hose													
		20	30	40	50	60	70	80	90	100	110	120	130	140	150
		Loss of Pressure in lbs./sq. in. (Hose length 50 ft.)													
0.500" with coupling at each end	50	1.8	5.0	10.1	18.1	-	-	-	-	-	-	-	-	-	-
	60	1.3	4.0	8.4	14.8	23.4	-	-	-	-	-	-	-	-	-
	70	1.0	3.4	7.0	12.4	20.0	28.4	-	-	-	-	-	-	-	-
	80	.9	2.8	6.0	10.8	17.4	25.2	34.6	-	-	-	-	-	-	-
	90	.8	2.4	5.4	9.5	14.8	22.0	30.5	41.0	-	-	-	-	-	-
	100	.7	2.3	4.8	8.4	13.3	19.3	27.2	36.6	-	-	-	-	-	-
0.750" with coupling at each end	50	.4	.8	1.5	2.4	3.5	4.4	6.5	8.5	11.4	14.2	-	-	-	-
	60	.3	.6	1.2	1.9	2.8	3.8	5.2	6.8	8.6	11.2	-	-	-	-
	70	.2	.5	.9	1.5	2.3	3.2	4.2	5.5	7.0	8.8	11.0	-	-	-
	80	.2	.4	.8	1.3	1.9	2.8	3.6	4.7	5.8	7.2	8.8	10.6	-	-
	90	.2	.4	.7	1.1	1.6	2.3	3.1	4.0	5.0	6.2	7.5	9.0	-	-
	100	.2	.4	.6	1.0	1.4	2.0	2.7	3.5	4.4	5.4	6.6	7.9	9.4	11.1
1.000" with coupling at each end	50	.1	.2	.3	.5	.8	1.1	1.5	2.0	2.6	3.5	4.8	7.0	-	-
	60	.1	.2	.3	.4	.6	.8	1.2	1.5	2.0	2.6	3.3	4.2	5.5	7.2
	70	-	.1	.2	.4	.5	.7	1.0	1.3	1.6	2.0	2.5	3.1	3.8	4.7
	80	-	.1	.2	.3	.5	.7	.8	1.1	1.4	1.7	2.0	2.4	2.7	3.5
	90	-	.1	.2	.3	.4	.6	.7	.9	1.2	1.4	1.7	2.0	2.4	2.8
	100	-	.1	.2	.2	.4	.5	.6	.8	1.0	1.2	1.5	1.8	2.1	2.4
1.250" with coupling at each end	50	-	-	.1	.2	.2	.3	.4	.5	.7	1.1	-	-	-	-
	60	-	-	-	.1	.2	.3	.3	.5	.6	.8	1.0	1.2	1.5	-
	70	-	-	-	.1	.2	.2	.3	.4	.4	.5	.7	.8	1.0	1.3
	80	-	-	-	-	.1	.2	.2	.3	.4	.5	.6	.7	.8	1.0
	90	-	-	-	-	.1	.2	.2	.3	.3	.4	.5	.6	.7	.8
	100	-	-	-	-	-	.1	.2	.2	.3	.4	.4	.5	.6	.7
1.500" with coupling at each end	50	-	-	-	-	-	.1	.2	.2	.2	.2	.3	.4	.5	.6
	60	-	-	-	-	-	-	.1	.2	.2	.2	.3	.3	.4	.5
	70	-	-	-	-	-	-	-	.1	.2	.2	.2	.3	.3	.4
	80	-	-	-	-	-	-	-	-	.2	.2	.2	.2	.3	.4
	90	-	-	-	-	-	-	-	-	.1	.1	.2	.2	.2	.2
	100	-	-	-	-	-	-	-	-	-	-	.1	.2	.2	.2

For longer or shorter lengths of hose the friction loss is proportional to the length: i.e., for 25 ft., 1/2 of the above; for 150 ft., 3 times above, etc.

FLOW CHART

The Flow Chart takes into account the loss in pressure due to friction. Capacities will be reduced 2% to 5% with amount of bending and type of coupling used. For heavier or slower flowing liquids, capacity will vary in proportion.

Gals. per Min.	PER 100 FEET OF HOSE							
	Inside Diameter							
	0.500	0.750	1.000	1.250	1.500	2.000	2.500	3.000
	Intake Pressure-Pounds-Water-Square Inch							
5	27	5	-	-	-	-	-	-
10	98	15	4	-	-	-	-	-
15	210	32	10	3	-	-	-	-
20	-	32	10	3	-	-	-	-
25	-	78	24	7	3	-	-	-
30	-	115	33	10	5	-	-	-
40	-	195	51	14	7	3	-	-
50	-	-	77	22	11	4	-	-
60	-	-	104	36	15	6	-	-
70	-	-	130	47	20	8	-	-
80	-	-	-	60	26	10	2	-
100	-	-	-	90	36	14	4	-
125	-	-	-	130	53	21	6	3
150	-	-	-	178	80	26	8	4
175	-	-	-	-	104	39	11	6
200	-	-	-	-	130	47	14	7
250	-	-	-	-	-	73	20	10
300	-	-	-	-	-	99	28	13

STANDARD HOSE RATINGS

Oil-resisting, general purpose rubber hose

HOSE SIZE		Braid	Max. PSI	Weight* lbs./ft.	
Inside Dia. in.	Outside Dia. in.				
.250	6.35 x .625	15.88	1	200	.17
.375	9.53 x .750	19.05	1	200	.23
.500	12.70 x .938	23.83	1	200	.33
.750	19.05 x 1.25	31.75	2	225	.52
1.000	25.40 x 1.50	38.10	2	200	.65
1.250	31.75 x 1.813	16.05	2	150	.86
1.500	38.10 x 2.125	53.97	2	150	1.00

*Figures are maximum and used as basis for reel capacity calculations. Actual weight may be slightly less than listed. Consult factory for chemical compatibility.

AERO-MOTIVE®



Aero-Motive Company

A Woodhead Industries, Inc. Subsidiary

P.O. Box 2678
Kalamazoo, MI 49003-2678
(269) 337-7700
1-800-999-8559
FAX: (269) 381-1081
www.aeromotive.com
www.reels.com

AKAPP Electro Industries

A Woodhead Industries, Inc. Subsidiary

Nijverheidsweg
P.O. Box 54
NL-3771 ME Barneveld
Netherlands
011-31-342-414022
Fax: 011-31-342-492384
www.akapp.com

Woodhead Connectivity Limited

A Woodhead Industries, Inc. Subsidiary

Rassau Industrial Estate
Ebbw Vale Gwent NP3 5SD
United Kingdom
(0495) 35 0436
Fax: (0495) 35 0877
sales@wdhd.co.uk

Woodhead Asia PTE Limited

A Woodhead Industries, Inc. Subsidiary

No. 4, Toh Tuck Link
Level 3 Mezzanine
Markono Logistics Building
Singapore 596 226
(65) 6261 6533
Fax: (65) 6261 3588

Woodhead Canada Limited

A Woodhead Industries, Inc. Subsidiary

1090 Brevik Place
Mississauga, Ontario
L4W 3Y5 Canada
(905) 624-6518
Fax: (905) 624-9151
www.woodhead.ca