

alcon Innovations

NEW NAMUR Series Solenoid Valve from Alcon Universal Convertible 3/2 and 5/2 NAMUR Mounting Valves



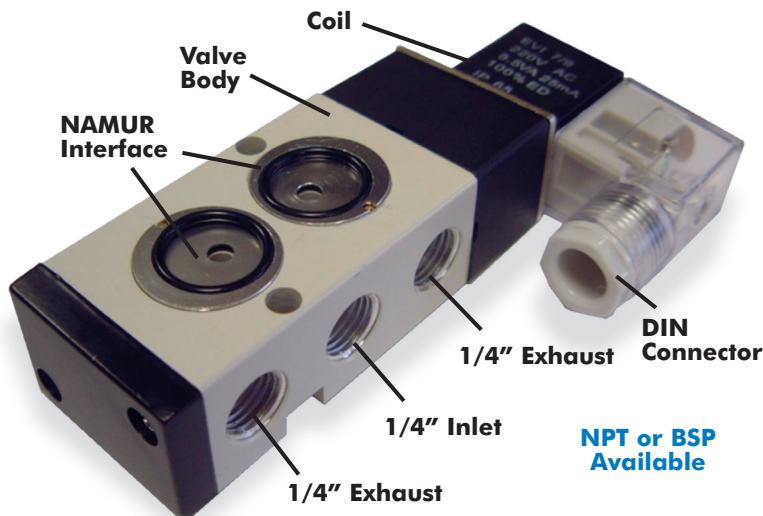
NAMUR Interface Valves ideally suited for direct actuator mounting

The Universal NAMUR Series Valves from Alcon are perfect for piloting single and double acting actuators used on process valves such as butterfly and ball valves.

Markets Served

- Offshore
- Petrochemical and Chemical Industries
- Paper/Pulp Recycling
- Food Processing
- Water Treatment Plants

Design Features



Features and Benefits

- Pilot operated spool valve technology, 3/2 or 5/2 convertible, by the user.
- High Flow Design: Cv = 1.4, Kv = 1.2
- Integral Push Button Manual Override is standard
- LED power indicator is standard
- Rapid response time up to 5 cycles per second
- Duty Cycle: 100% Continuously Rated for multimillion cycle life
- Integrated exhaust ports for variable speed control in 3/2 configuration
- Operating Pressure 37 - 150 psi (2.5 - 10 bar)

Technical Specifications

Standard Body Material: Anodized Aluminum

Standard Seal Material: Nitrile (BunaN)
+14°F to +176°F
-10°C to +80°C

Note: Temperature ranges indicate media temperatures for seal material.

Coil Voltage DC: 12v, 24v
Coil Voltage AC: 24v, 110v, 120v, 220v, 230v, 50/60 Hz

Standard Protection Class: NEMA 4
IP65
(Din Connector as shown)

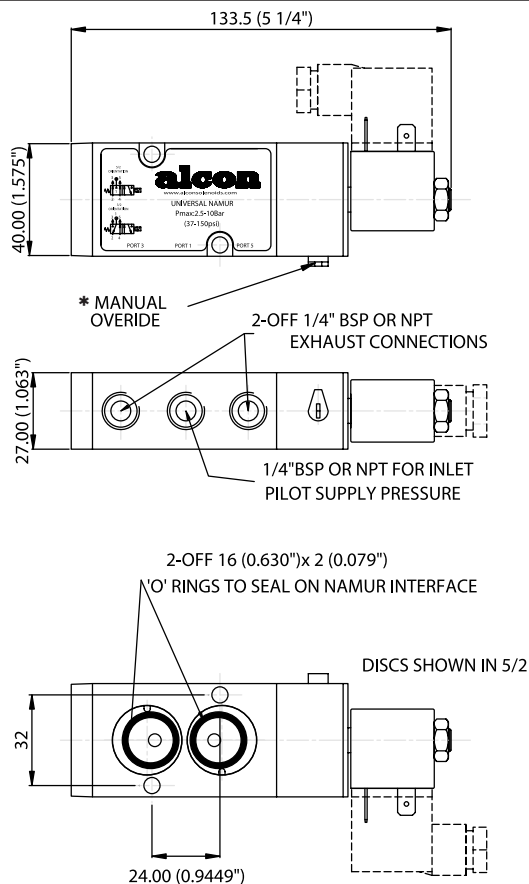
Electrical Connection: 10mm Din Connector (DIN 40050)

Coil Insulation: Class F

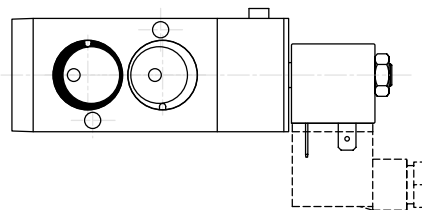
Ambient Temperature: +14°F to +122°F
-10°C to +50°C

Media: Compressed Air, Filtered and Lubricated

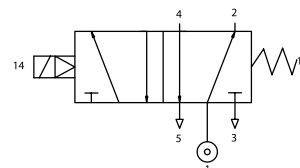
Dimensional Data - Universal Convertible 3/2 and 5/2 NAMUR Mounting Valves



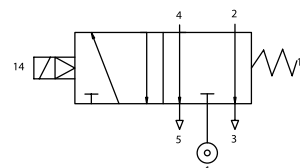
DISCS SHOWN IN 3/2



5/2 ORIENTATION



3/2 ORIENTATION



* The manual override device allows manual operation of the valve when in the de-energized state. First turn the electrical supply off, then to open the valve, press and turn the manual override screw clockwise through 1/4 turn so that the slot is in line with the solenoid. Return the screw to the closed position before energizing the valve.

The manual override has a push button feature incorporated into the design, allowing function of the valve when pressed.

Selection Guide

Pipe Size	Cv	OPD		Power Watts	Body Material	Weight lbs.	Catalog Number
		Bar	PSI				
1/4"	1.4	2.5-10	37-150	5.0	Aluminum	0.4	NAMUR STD-NPT
1/4"	1.4	2.5-10	37-150	5.0	Aluminum	0.4	NAMUR STD-BSP

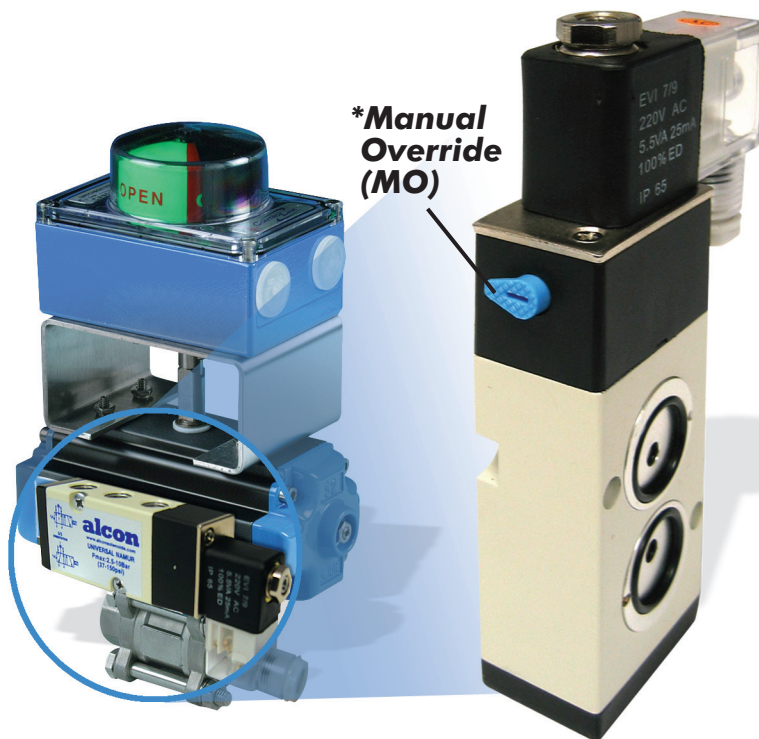
Operating Pressure Differential (OPD):

The differential pressure range between the inlet and outlet ports at which the valve can safely operate. Figures represent tests carried out at +/- 10% of rated voltage in a 80°F ambient.

Catalog Number:

Represents the valve in its standard (base) configuration. Optional specification combinations will modify this number accordingly - consult manufacturer for details.

Typical Alcon NAMUR valve Application



North American Headquarters

Alcon North America
7 Centre Drive
Orchard Park, New York 14127 • USA
Phone: 1-888-307-0708
Fax: 716-662-0406
www.alconsolenoids.com

Headquarters

Alcon IMC U.K. Limited
Patrick Gregory Road
West Midlands
WV 11 3DZ
United Kingdom
Tel: +44 (0) 1902 305678
Fax: +44 (0) 1902 305676
www.alconsolenoids.com