

VALUE THROUGH PERFORMANCE

DELTECH

100 SERIES

DELTECH® FILTERS

COLOR-CHANGE COALESCING
COMPRESSED AIR FILTERS



Deltech Series Color-Change Filters Provide Compressed Air System Protection You Can See



Deltech Series Color-Change Filters

Deltech® Filter Series color-change compressed air filters provide economical protection for the majority of the most common air uses—from point-of-use filtration to installation in branch lines or even main headers for complete plant air system filtration.

Designed to readily remove oil mists generated by reciprocating compressors, Deltech Series filters deliver high performance without the added expense associated with prefilters or dryers. These multistage filters remove water, liquid oil, oil mists and

particulates in a single unit. Filtration efficiency exceeds 99.99% at 0.5 micron particle size; 95% by weight of particulates and liquid droplets are removed before the coalescing stage. Air paths remain free, resulting in lower pressure drop and longer element life. Maximum pressure drop over the extended element life is only 2 psi – 3 psi.

Lowest pressure drop (2 - 3 psi)

- Brushes and wire mist separator remove coarse contaminants before they reach the element
- Air paths are unobstructed for free air flow

Color-change inspection at a glance

- Quick, easy check on oil removal
- Element turns red to signal on-time replacement for continuous high performance

Easy inspection

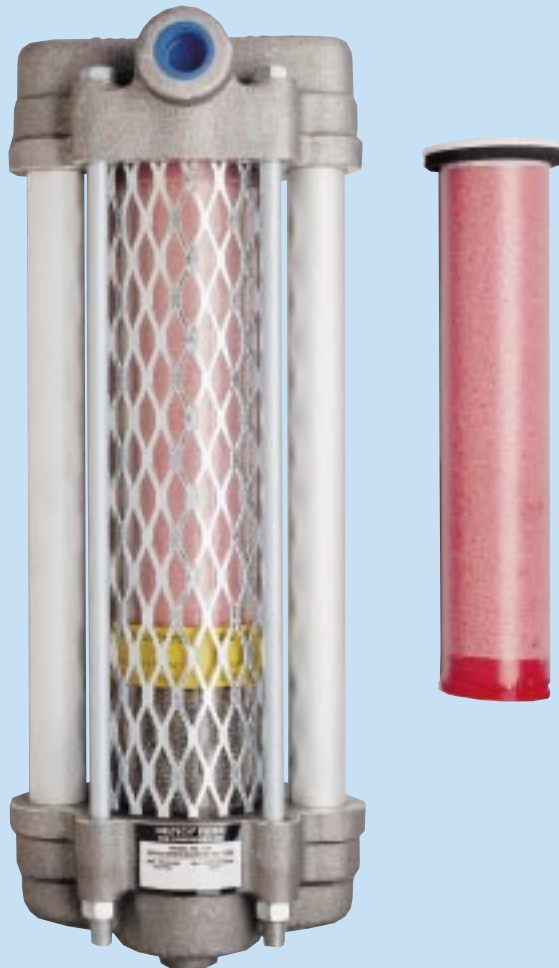
- Expanded mesh safety shield and transparent tube permit clear viewing of color-change (metal-tube models are fitted with sight ports)

Simplest installation

- Only one filter to install
- Multistage filtration removes dirt, liquids and oil mists in a single unit

Economical maintenance

- Only one element to inventory and replace
- Quick element changeout reduces downtime coarse contaminants before they reach the element; air paths are unobstructed for free air flow.



020 Filter

DELTECH

How To Select Your Deltech Series Filter

Determine your required flow rate, measured in scfm, and the pressure of the air to be filtered and select the appropriate filter from the model selection table.

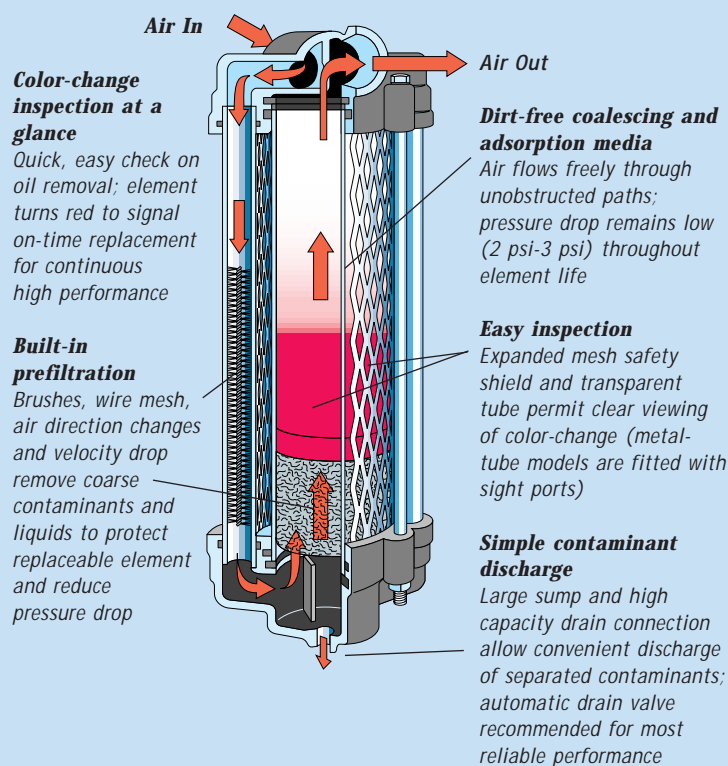
Example: For an air system operating at 110 psig, select a filter to remove oil, liquid water and solid particles from 175 scfm compressed air.

On the Model Selection Chart, read across to 110 psig inlet air pressure. Read down this column to the flow equal to or greater than 175 scfm. Select Model 150.

The operating range of each Deltech filter is broad enough to cover a wide range of flow rates and pressures without loss in performance. However, prolonged operation above the maximum recommended inlet air flow should be avoided.

Important: Do not select filter by pipe size. Make selection by flow rate and operating pressure only.

Deltech® Filters



Model Selection Chart

Model	Inlet Air Pressure (psig)												
	10	20	30	40	50	60	70	80	90	100	110	125	150
	Maximum Inlet Air Flow (scfm)												
020	3/4	1	1-1/2	1-3/4	2	2-1/4							
110 & 110R	2-1/2	3-1/2	4-1/2	6	7	8	9	10	11	12	13	14	17
120 & 120R	6-1/2	9	12	14	17	20	22	25	27	30	33	37	43
130 & 130R	11	15	19	24	28	33	37	41	46	50	54	60	72
140 & 140R	22	30	39	48	56	65	74	83	91	100	109	122	144
150 & 150R	41	57	74	91	107	124	140	157	174	190	205	230	272
160 & 160R	60	85	109	134	158	182	207	231	256	280	304	341	402
170R	168	234	304	372	439	509	576	643	713	780	842	944	1,115

Special safety features

Deltech Series filters are fitted with transparent tubes and expanded-metal safety shields. The loose-fitting shields guard against damage from external blows or air system upsets.

The filters may be fitted with metal tubes in place of the transparent tube and safety shield. Metal tubes must be ordered if the filter is expected to be in contact with solvent type paints, phosphate ester-based lubricants, aromatic or chlorinated hydrocarbon solvents, methanol, acetone or other ketones or lacquer solvents. These

materials attack the transparent tube and cause it to dissolve or stress crack. Metal tubes are fitted with sight glasses for viewing the color change in the replaceable element. Filters with metal tubes are designated by the suffix "R" in the model number and are sized using the Model Selection Chart.

Operating Conditions

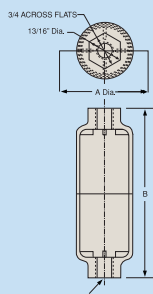
- Maximum operating temperature: 150°F
- Maximum recommended filtration temperature: 120°F

Materials & Construction

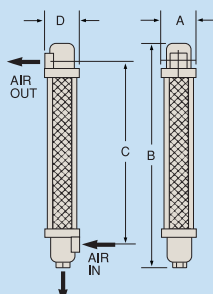
Components	Model				
	020	110	120,130,140,160	150	110R through 170R
Tube	Molded polycarbonate (Lexan) (complete housing)	Extruded polycarbonate (Lexan)	Double-annealed cast methyl methacrylate	Double-annealed cast methyl methacrylate or extruded polycarbonate (Lexan)	Electrogalvanized steel with sight glasses
Top and Bottom Heads	—	Heat treated ASTM 356-T6 aircraft-quality aluminum alloy castings			
Downcorner Tubes	—	Electrogalvanized steel			
Tie Rods	—	Electrogalvanized steel			
Nuts	—	Electrogalvanized steel			
Wire Mist Separator	—	0.010-inch aluminum-wire mesh			

Specifications

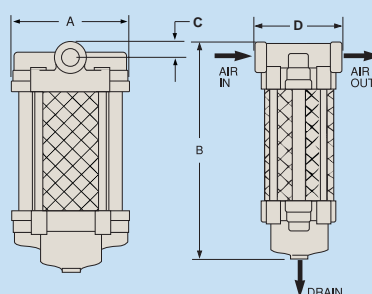
Model	Capacity (scfm)	Maximum Pressure (psig)	Dimensions (inches)				Connections (inches NPT)			Approx. Ship. Wt. (lbs.)	
			A	B	C	D	Inlet	Outlet	Drain	Transparent Tube	Metal Tube
020	2-1/4	60	1.3	4.0	—	—	1/8	1/8	—	1-1/4	NA
110 & 110R	12	150	2.5	16.0	13.3	2.5	1/2	1/2	1/4	4	8
120 & 120R	30	150	6.0	15.8	0.8	4.0	1/2	1/2	1/4	8	14
130 & 130R	50	150	6.5	16.3	1.0	5.0	1	1	1/4	10	17
140 & 140R	100	50	8.51	8.5	1.0	6.0	1	1	1/2	22	37
150 & 150R	190	150	10.0	19.3	1.3	7.8	1-1/2	1-1/2	1/2	28	47
160 & 160R	280	150	12.5	21.5	1.0	9.3	1-1/2	1-1/2	1/2	45	76
170R	780	150	16.0	26.8	1.8	14.0	2	2	1/2	NA	147



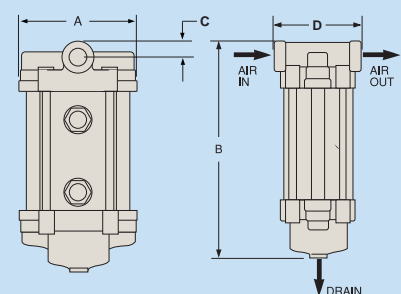
Model 020



Model 110 & 110R*



Models 120 through 160



Models 110R through 170R



*Note: Model 110R is shown without sight ports for clarity.



DELTECH

A United Dominion Company

Flair Industrial Air

4647 S.W. 40th Avenue

Ocala, Florida 34474

Tel 352-873-5700

Fax 352-873-5744

www.udi-flair.com/deltech

deltech@udi-flair.com

U.S. Facilities

Ocala, Florida
New Castle, Delaware*
Stanley, North Carolina
Rich Creek, Virginia

Canadian Facilities

Brockville, Ontario
Blainville, Québec
Tel 800-893-5247
Fax 800-318-0952

European Facilities

Hordean, Hants, England
Dortmund, Germany
Killarney, Ireland
Etten-Leur, The Netherlands

Asian Facilities

Jaipur, India
Vadodara, India
Tokyo, Japan
Pusan, Korea

Improvements and research are continuous at Deltech. Some specifications in this bulletin may change without notice.

Bulletin 101, Revision AB, August 1998. Copyright ©1998 Flair Corporation. Printed in U.S.A.