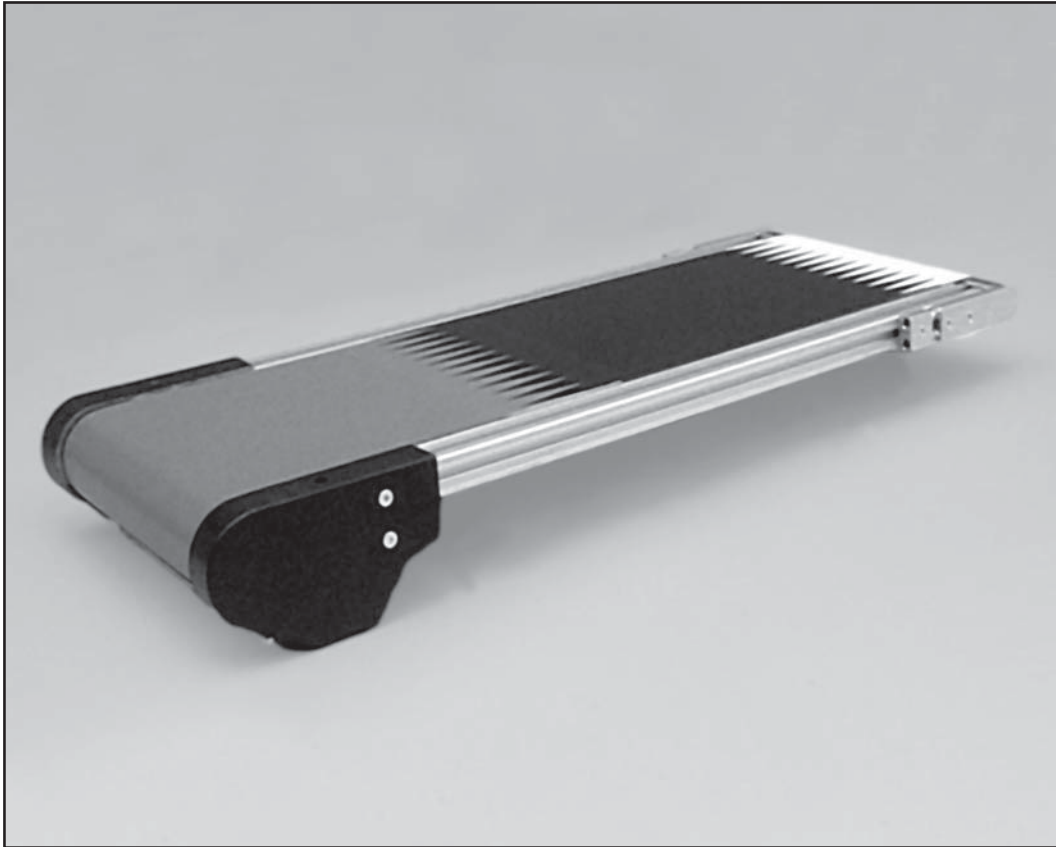


Catalogue 1/2001



The Conveyor System



MayTec®

Profit with Profile®



MayTec GmbH plant in Dachau



Stock of aluminium profiles

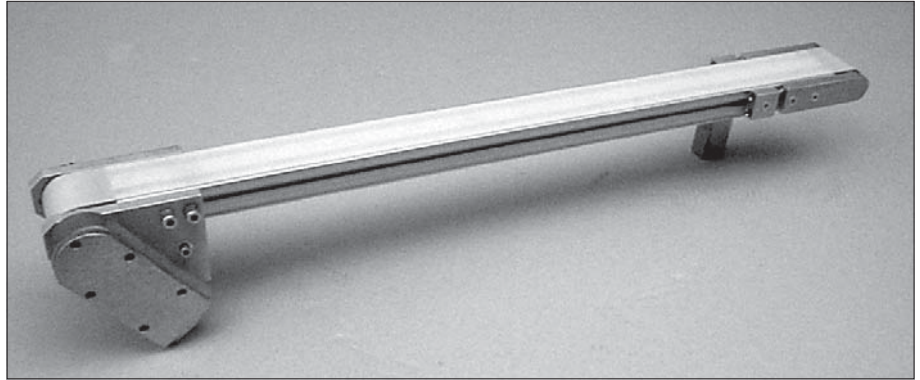


Small parts store

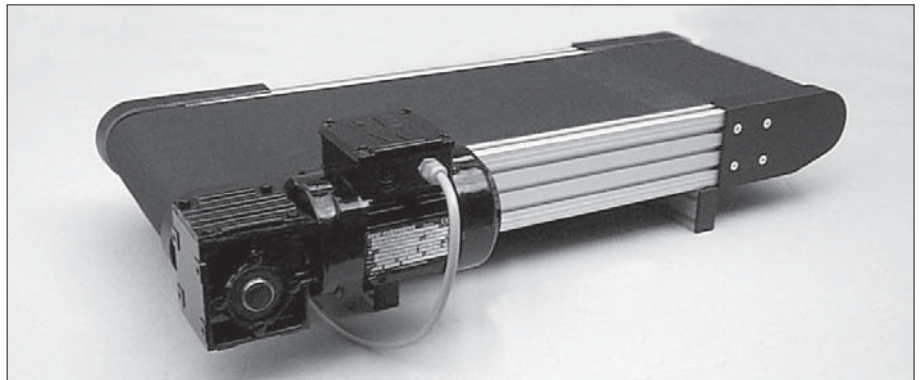


Part Number Groups	Page
5.00 Conveyors complete	
5.001 Overview	2
5.111 Conveyors with external gearbox	4
5.112 Conveyors with axial cylinder motor	12
5.113 Conveyors with centre drive	18
Conveyor questionnaire	26
 Pricelist	 28
 <i>Base frames</i> <i>(Catalogue in preparation)</i>	
 <i>Drive unit</i> <i>(Catalogue in preparation)</i>	
 <i>Idling roller assembly</i> <i>(Catalogue in preparation)</i>	
 <i>Support roller</i> <i>(Catalogue in preparation)</i>	
 <i>Guide rails</i> <i>(Catalogue in preparation)</i>	
 <i>Belt support plate</i> <i>(Catalogue in preparation)</i>	
 <i>Schüttmulden</i> <i>(Catalogue in preparation)</i>	
 <i>Legs</i> <i>(Catalogue in preparation)</i>	
 <i>Belts</i> <i>(Catalogue in Preparation)</i>	
 <i>Motors</i> <i>(Catalogue in preparation)</i>	
 <i>Electrical</i> <i>(Catalogue in preparation)</i>	
 <i>Application examples</i> <i>(Catalogue in preparation)</i>	

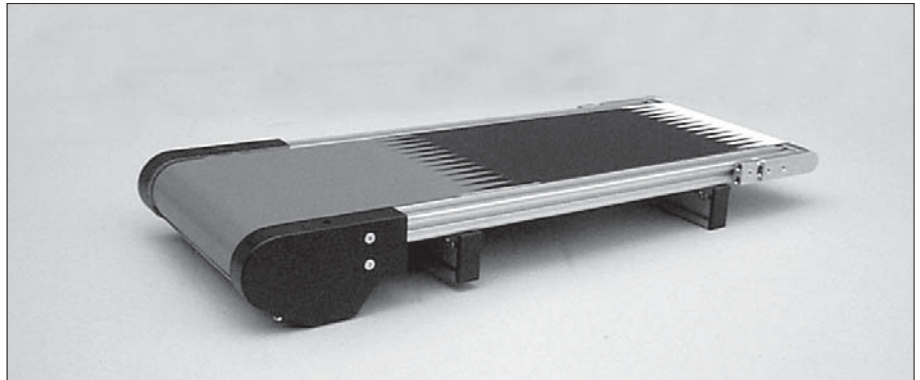
**Conveyor
with external gearbox**



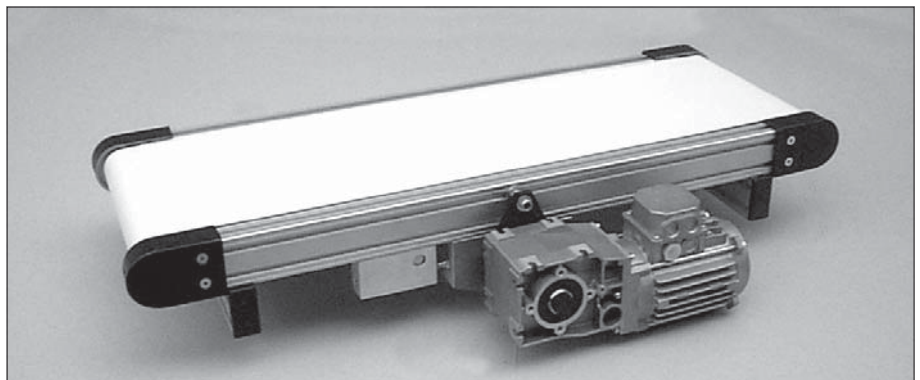
**Conveyor
with external gearbox**

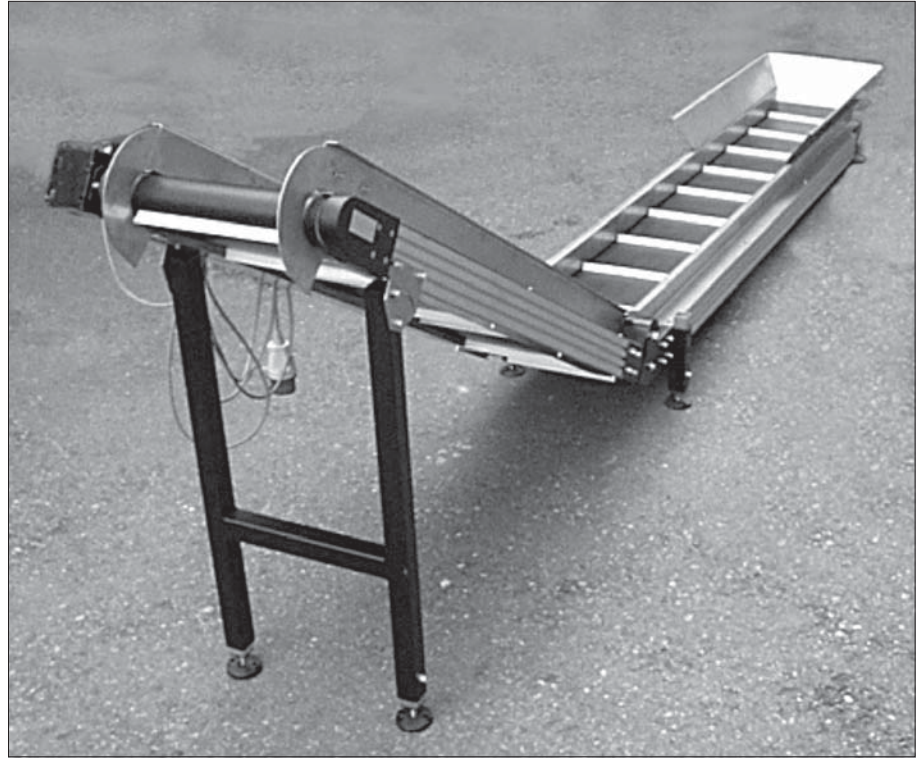


**Conveyor
with axial cylinder motor**



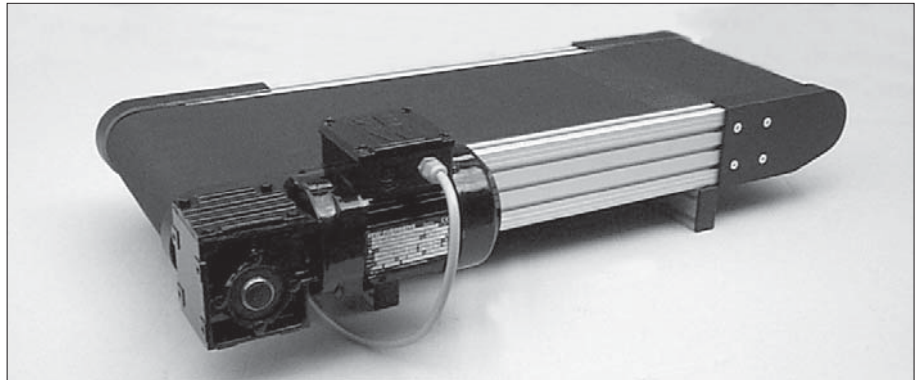
**Conveyor
with centre drive**



Angled conveyor


	Base frame				Drive unit						Drive roller asbly.				Support roller					
					External gear-box and motor			Axial cylinder motor			Centre drive									
	30	60	100	150	∅	∅	∅	∅	∅	∅	∅	∅	∅	∅	∅	∅				
				50	80	122	80	110	135	50	80	122	32	50	80	122	32	38	50	60
External gearbox and motor	30	x			x								x				x			
	60		x		x									x				x	x	
	100			x		x									x			x	x	
	150						x									x				x
Axial cylinder motor	30	x					x						x					x		
	60		x				x							x				x	x	
	100			x				x							x			x	x	
Centre drive	30	x								x			x					x		
	60		x							x				x				x	x	
	100			x							x				x			x	x	x
	150				x							x				x		x	x	x

Conveyor with external gearbox and motor

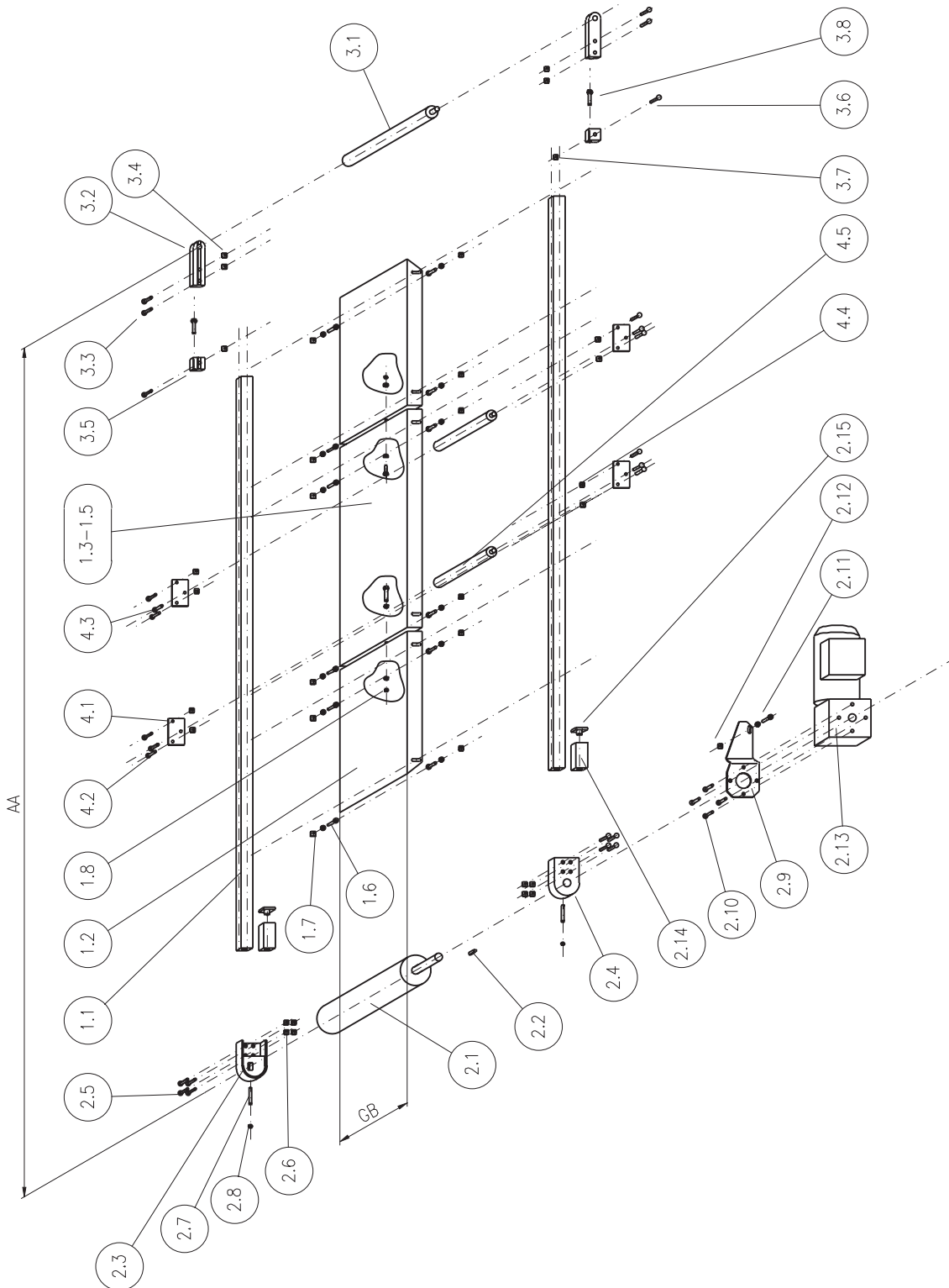


Technical data	
Base frame	Profile 30x30
External gearbox and motor	
Length	AA = max. 3,000 mm
Belt width	GB = 30 / 60 / 100 / 150 / 200 / 300 mm
Belt speed	

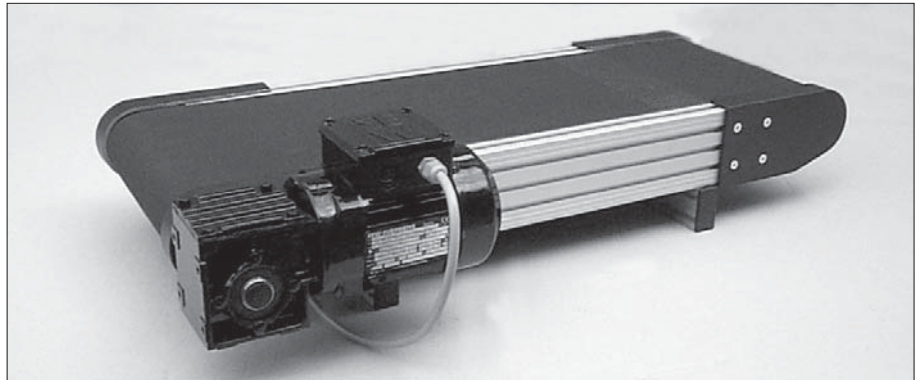
Pos.	Piece	Description	Order-No.
Conveyors with ext. gearbox a. motor compl.			5.111.000.030030.43
1.0	1	Base frame assembly	5.111.110.030030.43
1.1	2	Profile 30x30, 4F	
1.2	2	Belt support plate, end piece, length according to specifications	
1.3	-	Belt support plate, L = 500 mm	
1.4	-	Belt support plate, L = 1,000 mm	
1.5	-	Belt support plate, L = 1,500 mm	
1.6	14	Cap-screw DIN 6912 - M6x20 with washer DIN 433 - 6.4	
1.7	12	T-Nut, FM6	
1.8	2	Hexagon nut DIN 934 - M6 with washer DIN 433 - 6.4	
2.0	1	Drive unit with ext. gearbox a. motor compl.	5.111.120.030030.43
2.1	1	Drive roller Ø65	
2.2	1	Support spring A6x6x30	
2.3	1	Roller bracket, left	
2.4	1	Roller bracket, right	
2.5	8	Countersunk screw DIN 7991 - M6x12	
2.6	8	T-Nut, FM6	
2.7	2	Threaded pin	
2.8	2	Nut DIN 934 - M8	
2.9	1	Torque support	
2.10	4	Cap-screw with washer DIN 433	
2.11	1	Hexagon screw	
2.12	1	T-Nut	
2.13	1	External gearbox with motor	
2.14	2	Profile 30x30	
2.15	2	Cover cap 30x30	
3.0	1	Drive roller assembly	5.111.130.030030.43
3.1	1	Idling roller Ø30	
3.2	2	Roller bracket	
3.3	4	Countersunk screw	
3.4	4	T-Nut, FM6	
3.5	2	Adjusting block	
3.6	2	Countersunk screw	
3.7	2	T-Nut, FM6	
3.8	2	Hexagon screw	
4.0	1	Support roller assembly	5.111.140.032
4.1	2	Mounting plate	
4.2	4	Cap-screw	
4.3	2	Countersunk screw	
4.4	4	T-Nut	
4.5	1	Support roller Ø32	

Remark

Belt support plate: Dependent on belt length
 Support roller: From 2,000 mm, 1 support roller /m
 Ø32 up to belt width 700 mm
 Ø38 for belt width above 700 mm



Conveyor with external gearbox and motor

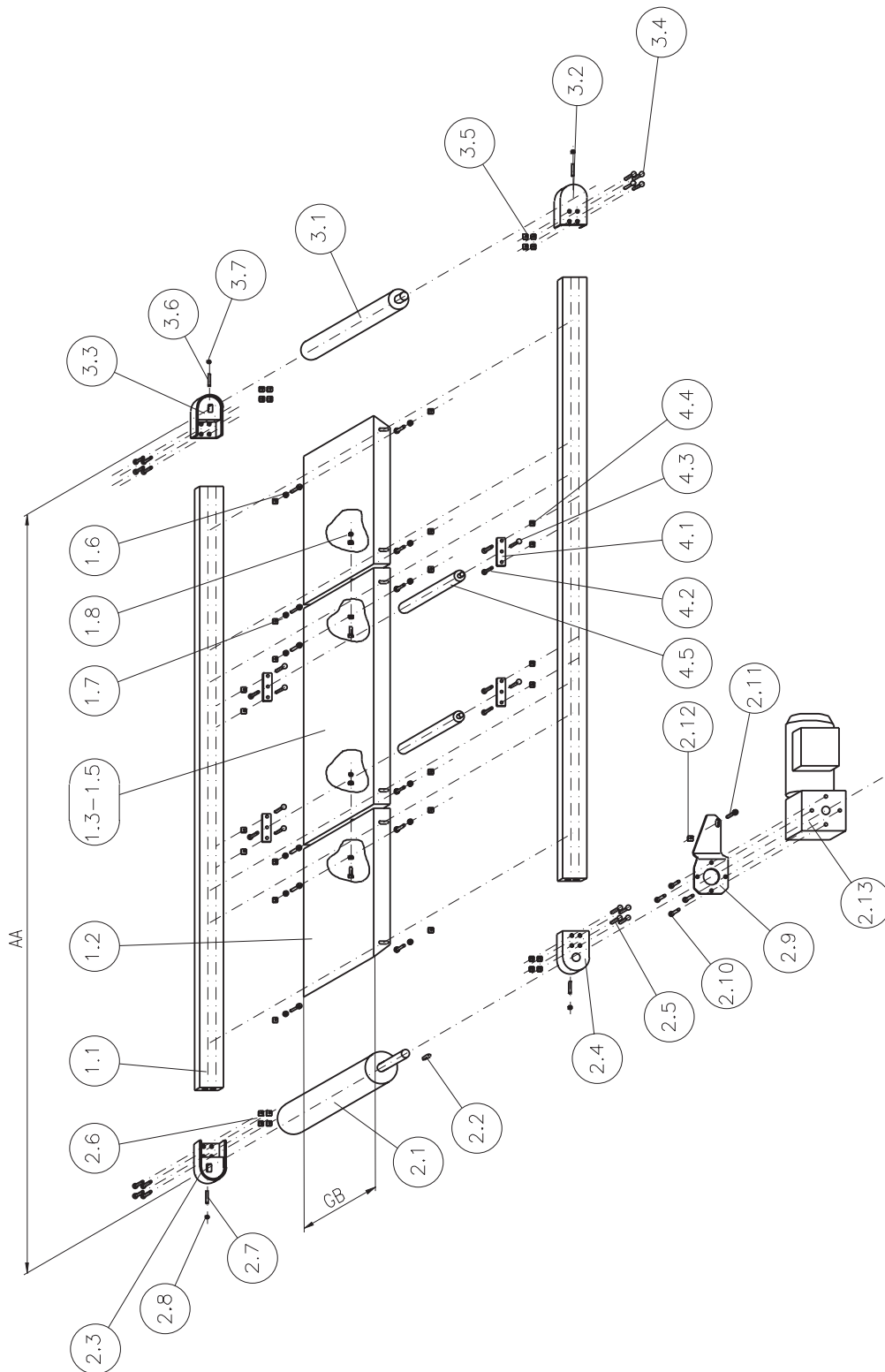


Technical data	
Base frame	Profile 30x60
External gearbox and motor	
Length	AA = max. 6,000 mm
Belt width	GB = 200 / 250 / 300 / 350 / 400 / 450 / 500 / 550 / 600 mm
Belt speed	4.5 to 60 m/min.

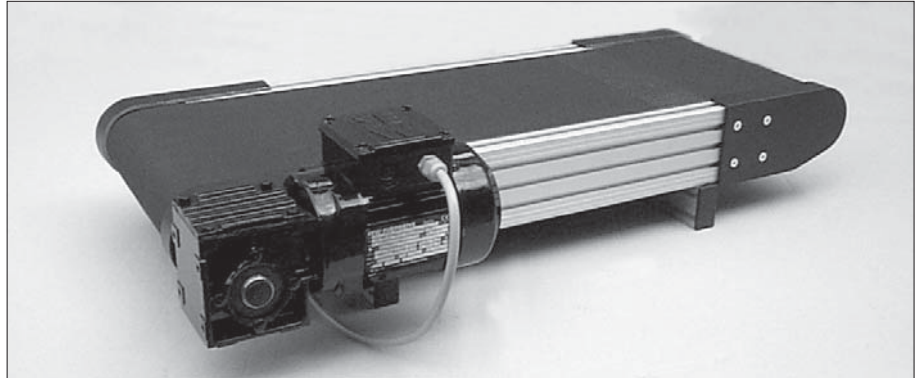
Pos.	Piece	Description	Order-No.
Conveyors with ext. gearbox a. motor compl.			5.111.000.030060.65
1.0	1	Base frame assembly	5.111.110.030060.65
1.1	2	Profile 30x60, 6F	
1.2	2	Belt support plate, end piece, length according to specifications	
1.3	-	Belt support plate, L = 500 mm	
1.4	-	Belt support plate, L = 1,000 mm	
1.5	-	Belt support plate, L = 1,500 mm	
1.6	14	Cap-screw DIN 6912 - M6x20 with washer DIN 433 - 6.4	
1.7	12	T-Nut, FM6	
1.8	2	Hexagon nut DIN 934 - M6 with washer DIN 433 - 6.4	
2.0	1	Drive unit with ext. gearbox a. motor compl.	5.111.120.030060.65
2.1	1	Drive roller Ø65	
2.2	1	Support spring A6x6x30	
2.3	1	Roller bracket, left	
2.4	1	Roller bracket, right	
2.5	8	Countersunk screw DIN 7991 - M6x12	
2.6	8	T-Nut, FM6	
2.7	2	Threaded pin	
2.8	2	Nut DIN 934 - M8	
2.9	1	Torque support	
2.10	4	Cap-screw with washer DIN 433	
2.11	2	Hexagon screw	
2.12	1	T-Nut	
2.13	1	External gearbox with motor	
3.0	1	Drive roller assembly	5.111.130.030060.65
3.1	1	Idling roller Ø50	
3.2	1	Roller bracket, left	
3.3	1	Roller bracket, right	
3.4	8	Countersunk screw DIN 7991 - M6x12	
3.5	8	T-Nut, FM6	
3.6	2	Threaded pin	
3.7	2	Nut DIN 934 - M8	
4.0	1	Support roller assembly	5.111.140.0□□
4.1	2	Mounting plate	
4.2	4	Cap-screw	
4.3	2	Countersunk screw	
4.4	4	T-Nut	
4.51	1	Support roller Ø32	
4.52	1	Support roller Ø38	

Remark

Belt support plate: Dependent on belt length
 Support roller: From 2,000 mm, 1 support roller /m
 Ø32 up to belt width 700 mm
 Ø38 for belt width above 700 mm



Conveyor with external gearbox and motor

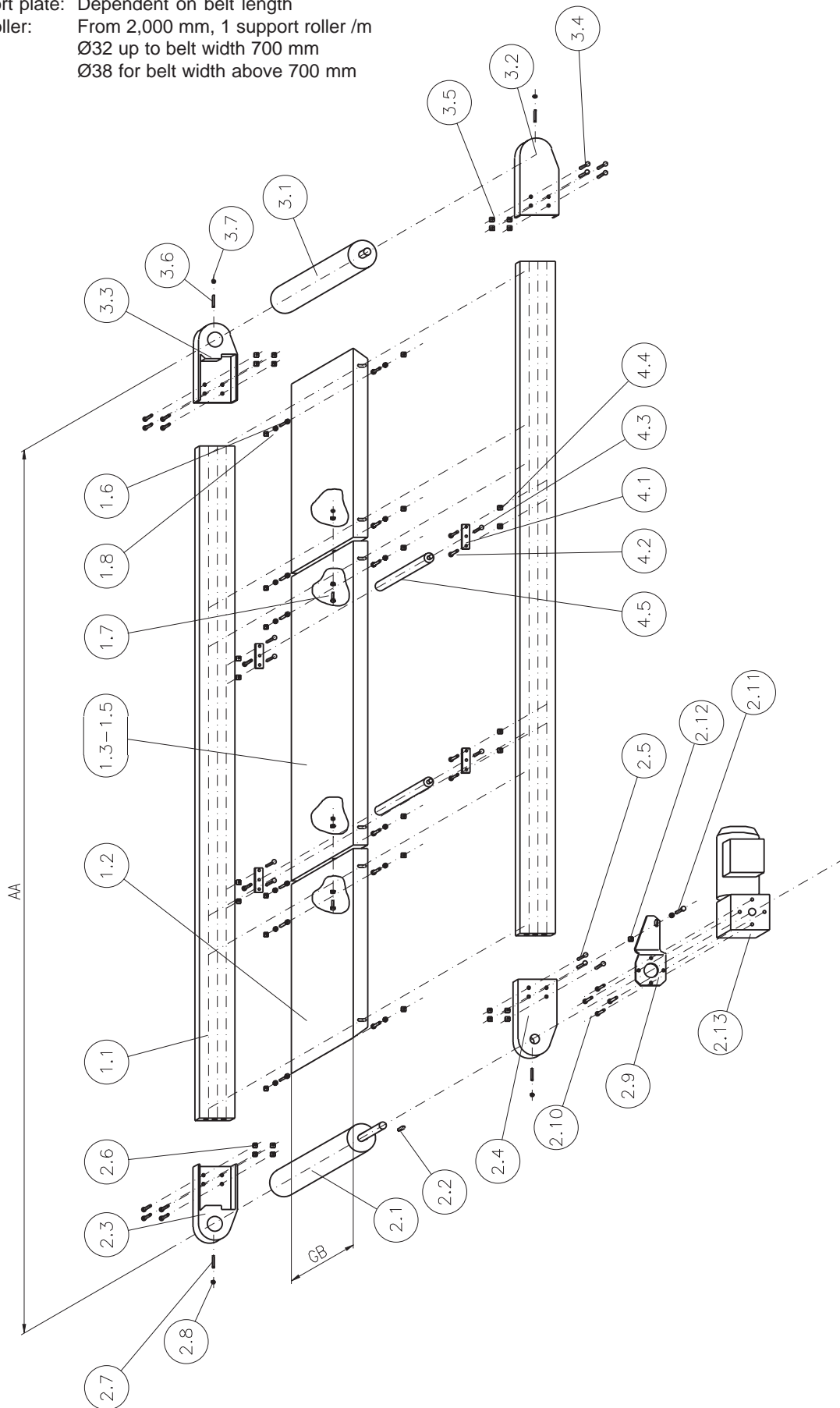


Technical data	
Base frame	Profile 30x100
External gearbox and motor	
Length	AA = max. 12,000 mm
Belt width	GB = 200 / 250 / 300 / 350 / 400 / 450 / 500 / 550 / 600 / 650 / 700 / 750 / 800 / 850 / 900 / 950 / 1,000 mm
Belt speed	3 to 60 m/min.

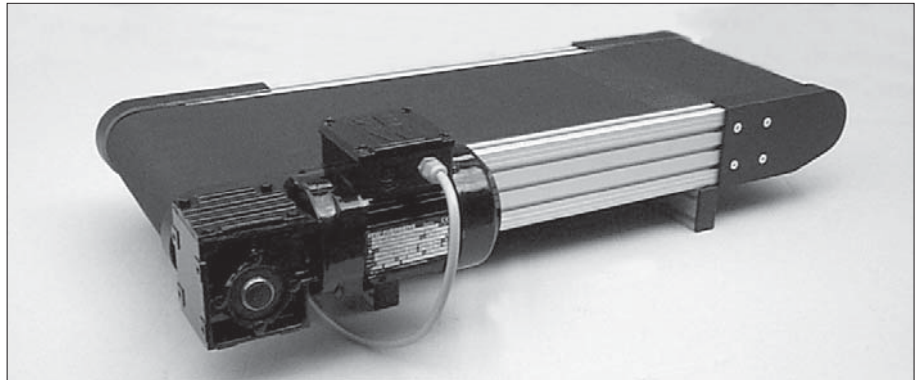
Pos.	Piece	Description	Order-No.
Conveyors with ext. gearbox a. motor compl.			5.111.000.030100.84
1.0	1	Base frame assembly	5.111.110.030100.84
1.1	2	Profile 30x100, 8F	
1.2	2	Belt support plate, end piece, length according to specifications	
1.3	-	Belt support plate, L = 500 mm	
1.4	-	Belt support plate, L = 1,000 mm	
1.5	-	Belt support plate, L = 1,500 mm	
1.6	14	Cap-screw DIN 6912 - M6x20 with washer DIN 433 - 6.4	
1.7	12	T-Nut, FM6	
1.8	2	Hexagon nut DIN 934 - M6 with washer DIN 433 - 6.4	
2.0	1	Drive unit with ext. gearbox a. motor compl.	5.111.120.030100.84
2.1	1	Drive roller Ø80	
2.2	1	Support spring A6x6x30	
2.3	1	Roller bracket, left	
2.4	1	Roller bracket, right	
2.5	8	Countersunk screw DIN 7991 - M6x12	
2.6	8	T-Nut, FM6	
2.7	2	Threaded pin	
2.8	2	Nut DIN 934 - M8	
2.9	1	Torque support	
2.10	4	Cap-screw with washer DIN 433	
2.11	2	Hexagon screw	
2.12	1	T-Nut	
2.13	1	External gearbox with motor	
3.0	2	Drive roller assembly	5.111.130.030100.84
3.1	2	Idling roller Ø80	
3.2	2	Roller bracket, left	
3.3	2	Roller bracket, right	
3.4	16	Countersunk screw DIN 7991 - M6x12	
3.5	16	T-Nut, FM6	
3.6	4	Threaded pin	
3.7	4	Nut DIN 934 - M8	
4.0	1	Support roller assembly	5.111.140.0□□
4.1	2	Mounting plate	
4.2	8	Cap-screw	
4.3	4	Countersunk screw	
4.4	8	T-Nut	
4.5	1	Support roller	

Remark

Belt support plate: Dependent on belt length
 Support roller: From 2,000 mm, 1 support roller /m
 Ø32 up to belt width 700 mm
 Ø38 for belt width above 700 mm



Conveyor with external gearbox and motor

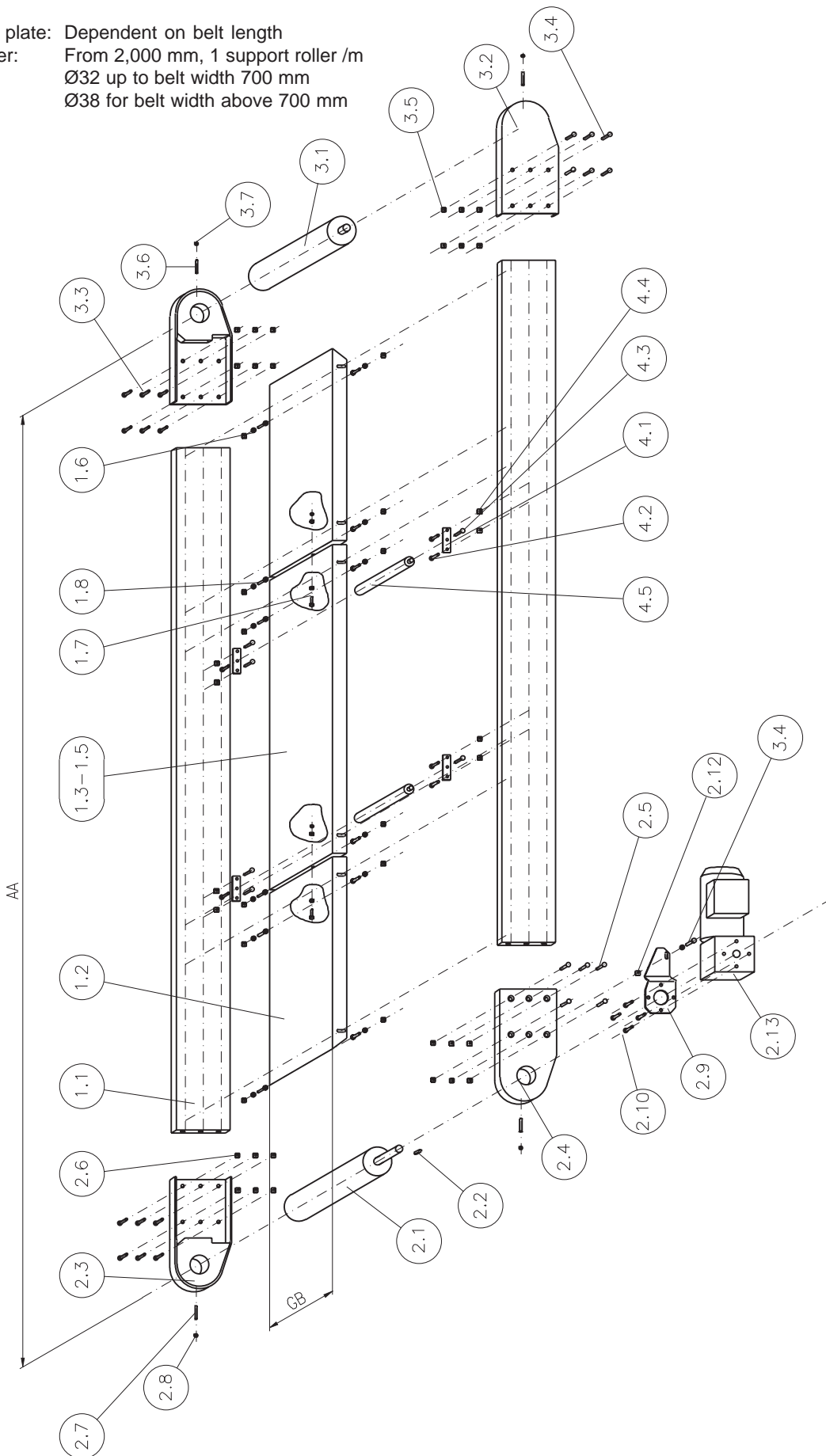


Technical data	
Base frame	Profile 30x150
External gearbox and motor	
Length	AA = max. 12,000 mm
Belt width	GB = 700 / 800 / 900 / 1,000 / 1,100 / 1,200 / 1,300 mm
Belt speed	4.5 to 60 m/min.

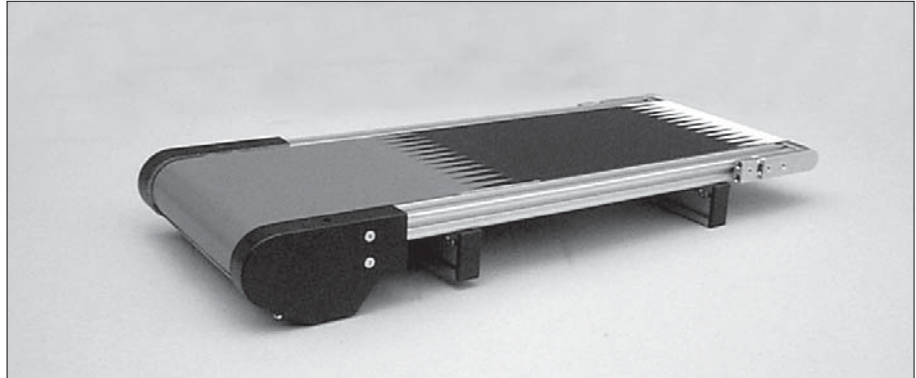
Pos.	Piece	Description	Order-No.
Conveyors with ext. gearbox a. motor compl.			5.111.000.030150.85
1.0	1	Base frame assembly	5.111.110.030150.85
1.1	2	Profile 30x150, 8F, plain	
1.2	2	Belt support plate, end piece, length according to specifications	
1.3	-	Belt support plate, L = 500 mm	
1.4	-	Belt support plate, L = 1,000 mm	
1.5	-	Belt support plate, L = 1,500 mm	
1.6	14	Cap-screw DIN 6912 - M6x20 with washer DIN 433 - 6.4	
1.7	12	T-Nut, FM6	
1.8	2	Hexagon nut DIN 934 - M6 with washer DIN 433 - 6.4	
2.0	1	Drive unit with ext. gearbox a. motor compl.	5.111.120.030150.85
2.1	1	Drive roller Ø122	
2.2	1	Support spring A6x6x30	
2.3	1	Roller bracket, left	
2.4	1	Roller bracket, right	
2.5	8	Countersunk screw DIN 7991 - M6x12	
2.6	8	T-Nut, FM6	
2.7	2	Threaded pin	
2.8	2	Nut DIN 934 - M8	
2.9	1	Torque support	
2.10	4	Cap-screw with washer DIN 433	
2.11	2	Hexagon screw	
2.12	1	T-Nut	
2.13	1	External gearbox with motor	
3.0	1	Drive roller assembly	5.111.130.030150.85
3.1	1	Idling roller Ø122	
3.2	1	Roller bracket, left	
3.3	1	Roller bracket, right	
3.4	8	Countersunk screw DIN 7991 - M6x12	
3.5	8	T-Nut, FM6	
3.6	2	Threaded pin	
3.7	2	Nut DIN 934 - M8	
4.0	1	Support roller assembly	5.111.140.0□□
4.1	2	Mounting plate	
4.2	8	Cap-screw	
4.3	4	Countersunk screw	
4.4	8	T-Nut	
4.5	1	Support roller	

Remark

Belt support plate: Dependent on belt length
 Support roller: From 2,000 mm, 1 support roller /m
 Ø32 up to belt width 700 mm
 Ø38 for belt width above 700 mm



Conveyor with axial cylinder motor

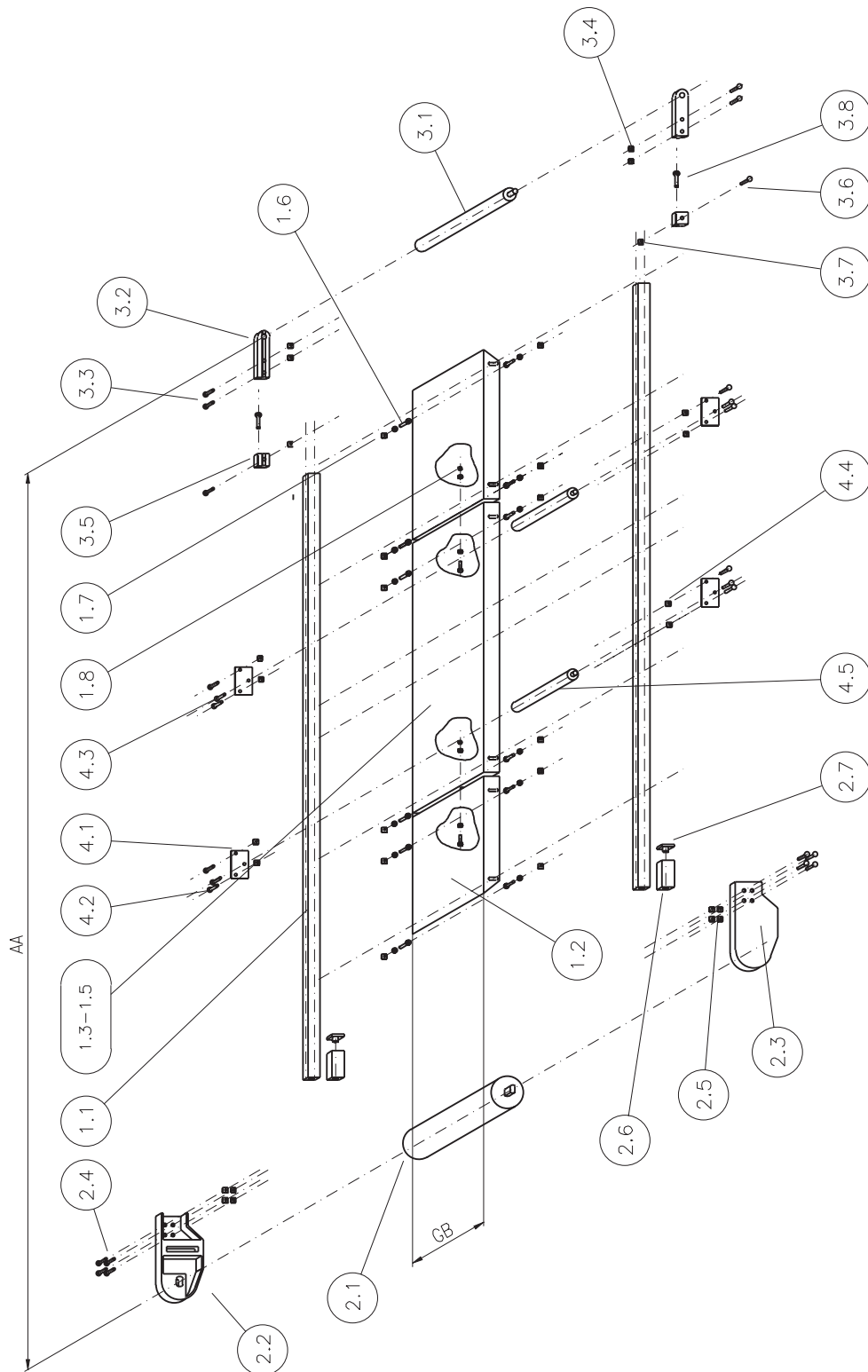


Technical data	
Base frame	Profile 30x30
Axial cylinder motor	Type: LAT 80
Length	AA = max. 4,000 mm
Belt width	GB = 250 / 300 / 350 / 400 / 450 / 500 / 550 / 600 mm
Belt speed	7.2 to 36 m/min.

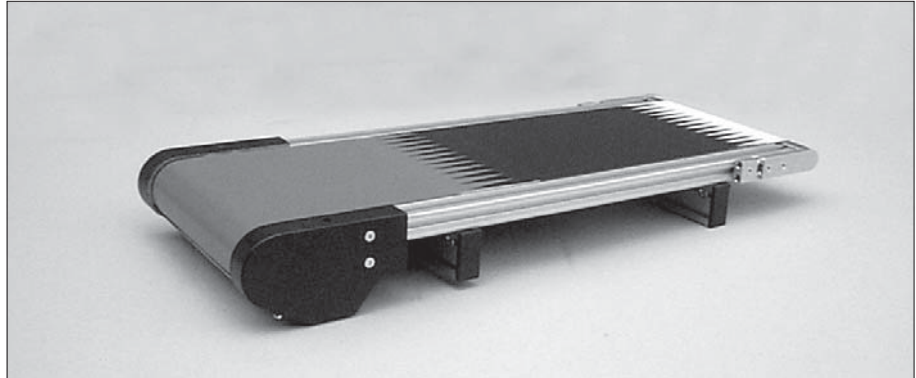
Pos.	Piece	Description	Order-No.
		Conveyor with axial cylinder motor complete	5.112.000.030030.43
1.0	1	Base frame assembly	5.112.110.030030.43
1.1	2	Profile 30x30, 4F	
1.2	2	Belt support plate, end piece, length according to specifications	
1.3	-	Belt support plate, L = 500 mm	
1.4	-	Belt support plate, L = 1,000 mm	
1.5	-	Belt support plate, L = 1,500 mm	
1.6	14	Cap-screw DIN 6912 - M6x20 with washer DIN 433 - 6.4	
1.7	12	T-Nut, FM6	
1.8	2	Hexagon nut DIN 934 - M6 with washer DIN 433 - 6.4	
2.0	1	Drive unit with axial cylinder motor complete	5.112.120.030030.43
2.1	1	Axial cylinder motor LAT 80	
2.2	1	Roller bracket, left for axial cylinder motor	
2.3	1	Roller bracket, right for axial cylinder motor	
2.4	8	Countersunk screw DIN 7991 - M6x12	
2.5	8	T-Nut, FM6	
2.6	2	Profile 30x30	
2.7	2	Cover cap 30x30	
3.0	1	Drive roller assembly	5.112.130.030030.43
3.1	1	Idling roller Ø30	
3.2	2	Roller bracket	
3.3	4	Countersunk screw	
3.4	4	T-Nut, FM6	
3.5	2	Adjusting block	
3.6	2	Countersunk screw	
3.7	2	T-Nut, FM6	
3.8	2	Hexagon screw	
4.0	1	Support roller assembly	5.112.140.032
4.1	2	Mounting plate	
4.2	4	Cap-screw	
4.3	2	Countersunk screw	
4.4	4	T-Nut	
4.5	1	Support roller Ø32	

Remark

Belt support plate: Dependent on belt length
 Support roller: From 2,000 mm, 1 support roller /m



Conveyor with axial cylinder motor

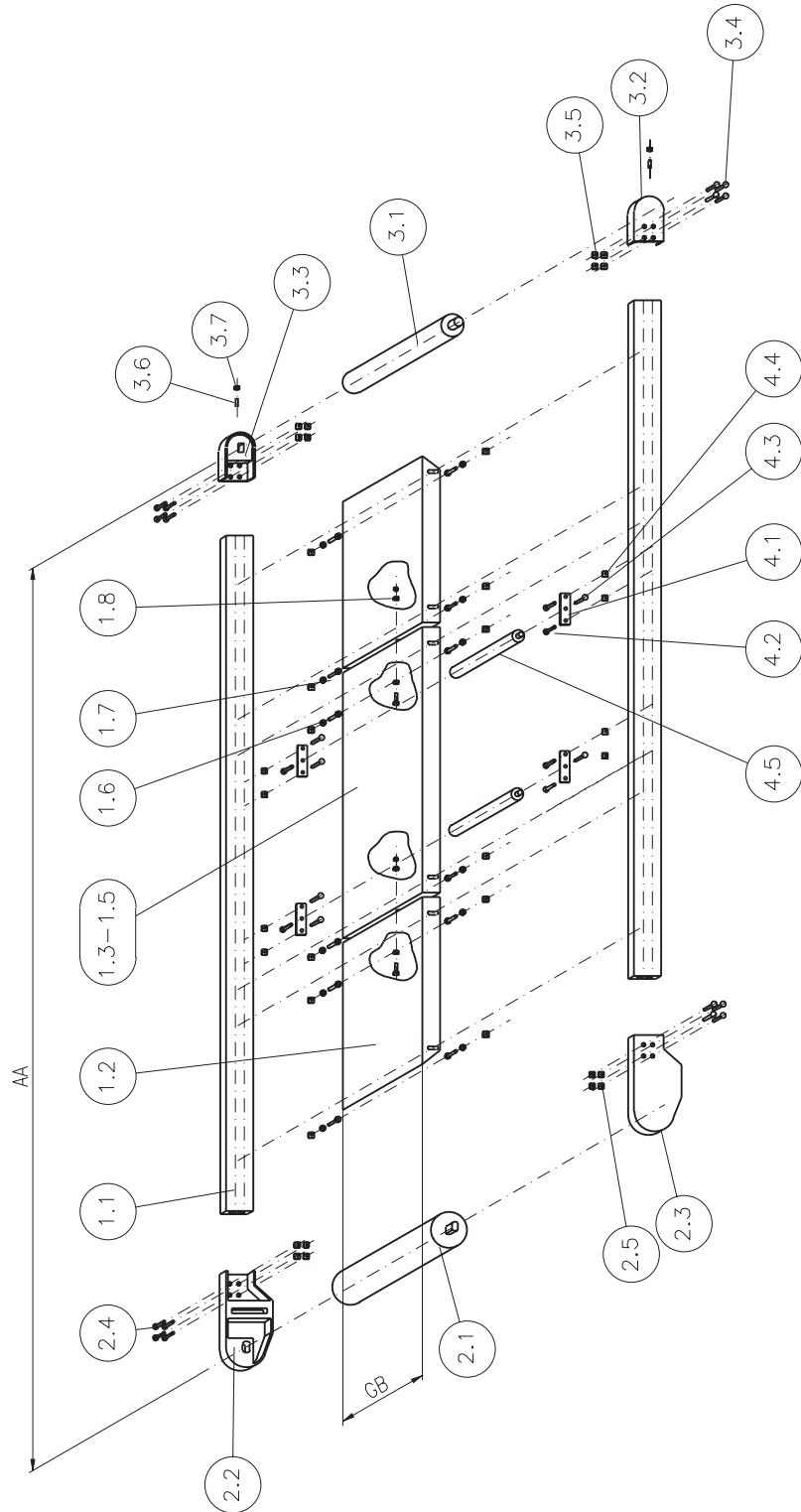


Technical data	
Base frame	Profile 30x60
Axial cylinder motor	Type: LAT 80
Length	AA = max. 4,000 mm
Belt width	GB = 250 / 300 / 350 / 400 / 450 / 500 / 550 / 600 mm
Belt speed	7.2 to 36 m/min.

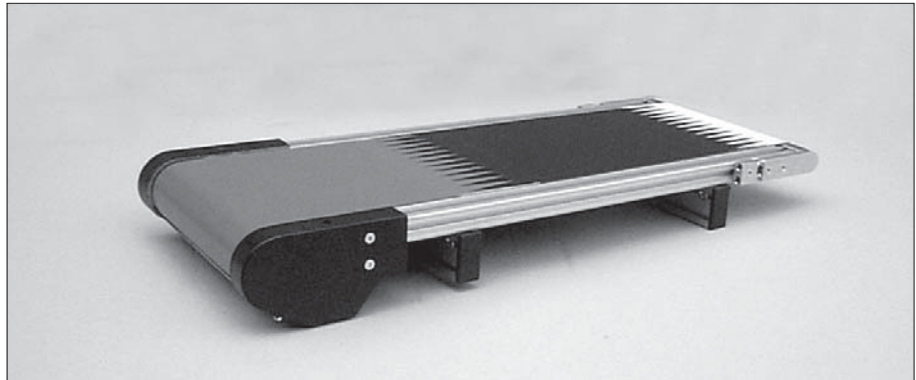
Pos.	Piece	Description	Order-No.
		Conveyor with axial cylinder motor complete	5.112.000.030060.65
1.0	1	Base frame assembly	5.112.110.030060.65
1.1	2	Profile 30x60, 6F	
1.2	2	Belt support plate, end piece, length according to specifications	
1.3	-	Belt support plate, L = 500 mm	
1.4	-	Belt support plate, L = 1,000 mm	
1.5	-	Belt support plate, L = 1,500 mm	
1.6	14	Cap-screw DIN 6912 - M6x20 with washer DIN 433 - 6.4	
1.7	12	T-Nut FM6	
1.8	2	Hexagon nut DIN 934 - M6 with washer DIN 433 - 6.4	
2.0	1	Drive unit with axial cylinder motor complete	5.112.120.030060.65
2.1	1	Axial cylinder motor LAT 80	
2.2	1	Roller bracket, left for axial cylinder motor	
2.3	1	Roller bracket, right for axial cylinder motor	
2.4	8	Countersunk screw DIN 7991 - M6x12	
2.5	8	T-Nut, FM6	
3.0	1	Drive roller assembly	5.112.130.030060.65
3.1	1	Idling roller	
3.2	1	Roller bracket, left	
3.3	1	Roller bracket, right	
3.4	8	Countersunk screw DIN 7991 - M6x12	
3.5	8	T-Nut, FM6	
3.6	2	Threaded pin	
3.7	2	Nut, DIN 934 - M8	
4.0	1	Support roller assembly	5.112.140.032
4.1	2	Mounting plate	
4.2	4	Cap-screw	
4.3	2	Countersunk screw	
4.4	4	T-Nut	
4.5	1	Support roller Ø32	

Remark

Belt support plate: Dependent on belt length
 Support roller: From 2,000 mm, 1 support roller /m



Conveyor with axial cylinder motor

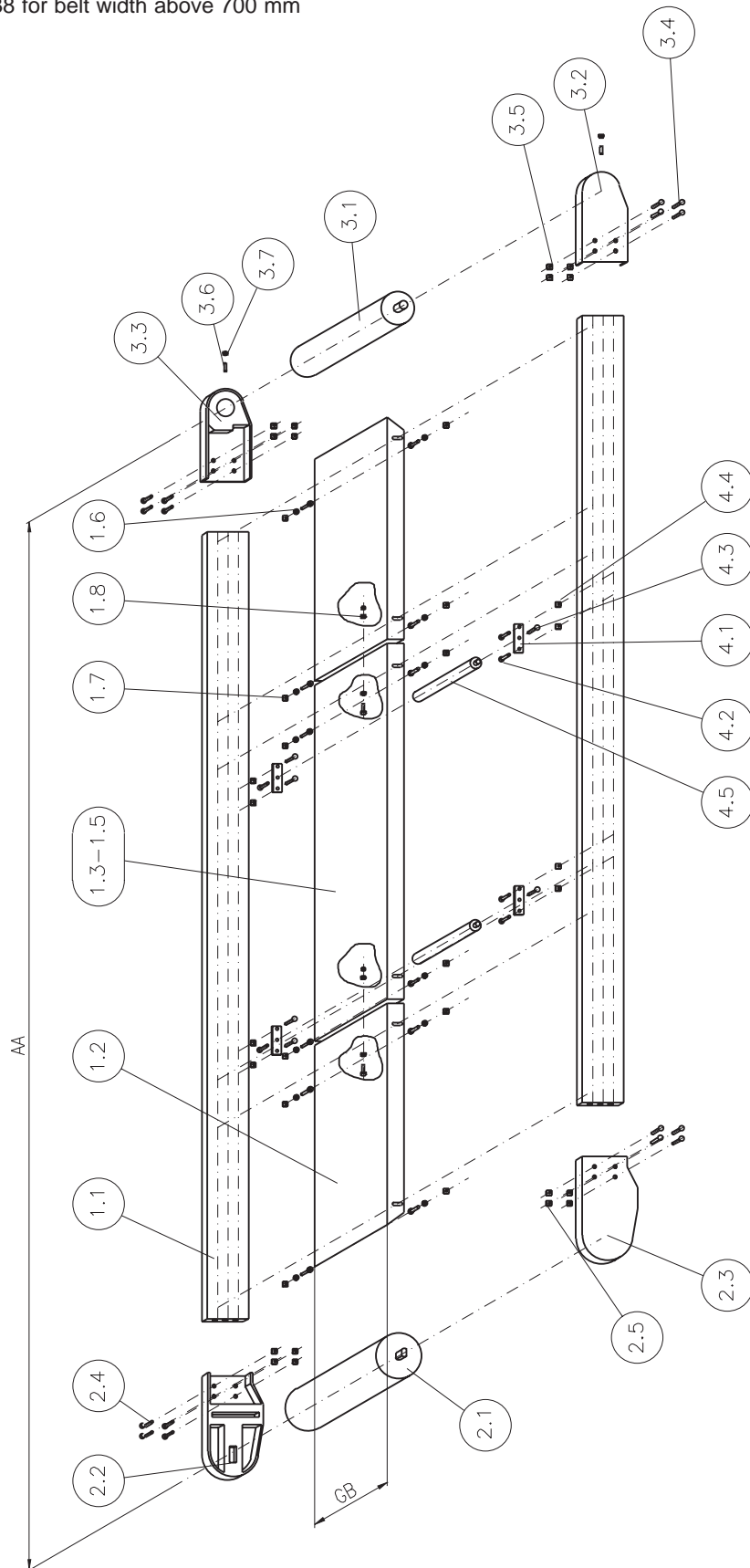


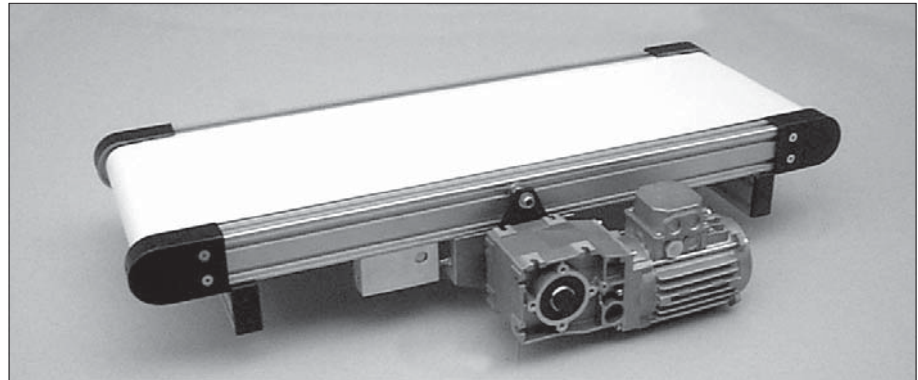
Technical data	
Base frame	Profile 30x100
Axial cylinder motor	Type: LAT 110
Length	AA = max. 6,000 mm
Belt width	GB = 350 / 400 / 450 / 500 / 550 / 600 / 700 / 800 / 900 / 1,000 mm
Belt speed	6 to 60 m/min.

Pos.	Piece	Description	Order-No.
		Conveyor with axial cylinder motor complete	5.112.000.030100.84
1.0	1	Base frame assembly	5.112.110.030100.84
1.1	2	Profile 30x100, 8F	
1.2	2	Belt support plate, end piece, length according to specifications	
1.3	-	Belt support plate, L = 500 mm	
1.4	-	Belt support plate, L = 1,000 mm	
1.5	-	Belt support plate, L = 1,500 mm	
1.6	14	Cap-screw DIN 6912 - M6x20 with washer DIN 433 - 6.4	
1.7	12	T-Nut, FM6	
1.8	2	Hexagon nut DIN 934 - M6 with washer DIN 433 - 6.4	
2.0	1	Drive unit with axial cylinder motor complete	5.112.120.030100.84
2.1	1	Axial cylinder motor LAT 110	
2.2	1	Roller bracket, left for axial cylinder motor	
2.3	1	Roller bracket, right for axial cylinder motor	
2.4	8	Countersunk screw DIN 7991 - M6x12	
2.5	8	T-Nut, FM6	
3.0	1	Drive roller assembly	5.112.130.030100.84
3.1	1	Idling roller	
3.2	1	Roller bracket, left	
3.3	1	Roller bracket, right	
3.4	8	Countersunk screw DIN 7991 - M6x12	
3.5	8	T-Nut, FM6	
3.6	2	Threaded pin	
3.7	2	Nut, DIN 934 - M8	
4.0	1	Support roller assembly	5.112.140.0 □□
4.1	2	Mounting plate	
4.2	4	Cap-screw	
4.3	2	Countersunk screw	
4.4	4	T-Nut	
4.51	1	Support roller Ø32	
4.52	1	Support roller Ø38	

Remark

Belt support plate: Dependent on belt length
 Support roller: From 2,000 mm, 1 support roller /m
 Ø32 up to belt width 700 mm
 Ø38 for belt width above 700 mm



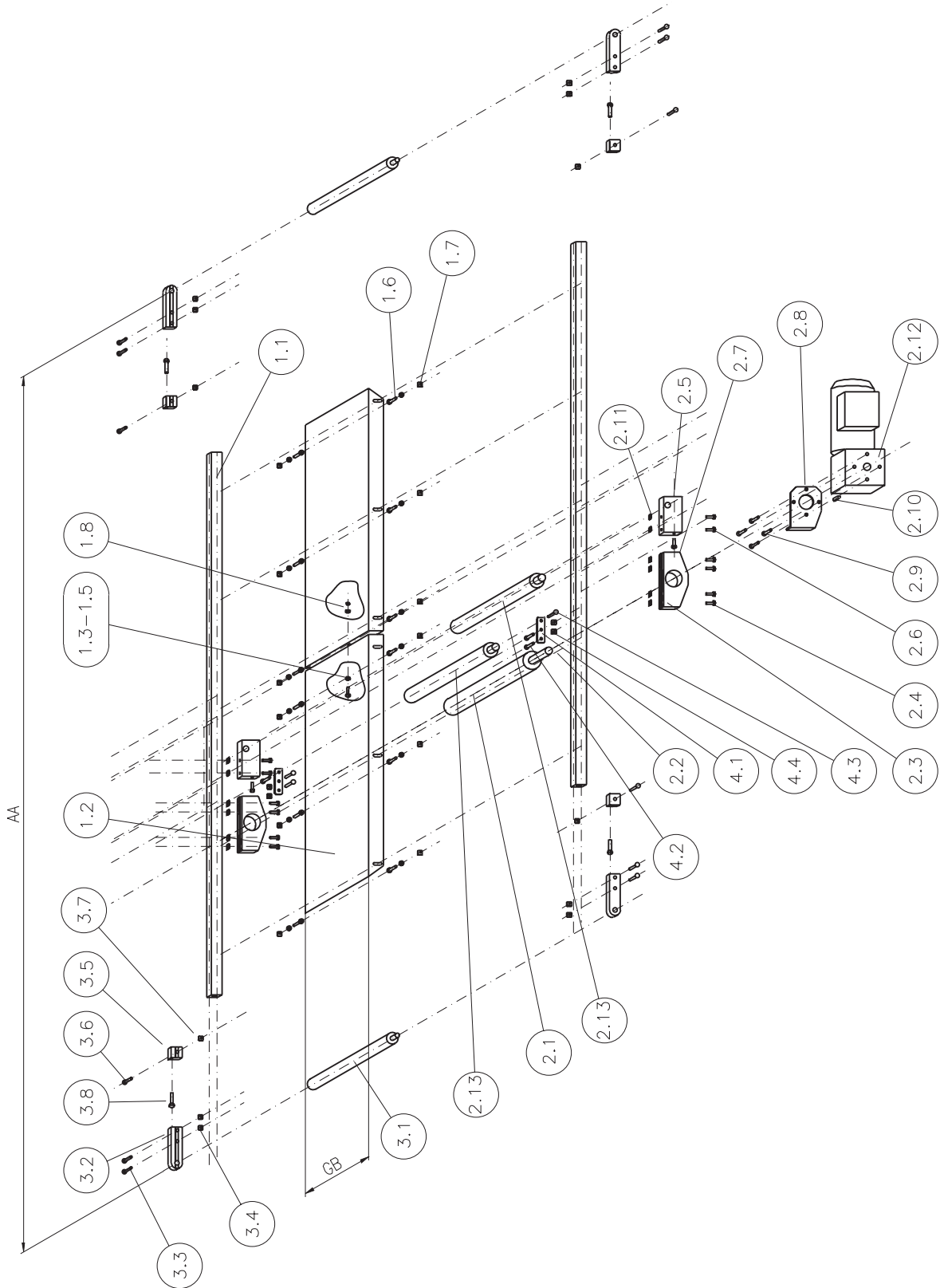
**Conveyor
with centre drive**


Technical data	
Base frame	Profile 30x30
Geared motor	
Length	AA = max. 3,000 mm
Belt width	GB = 30 / 60 / 100 / 150 / 200 / 300 mm
Belt speed	

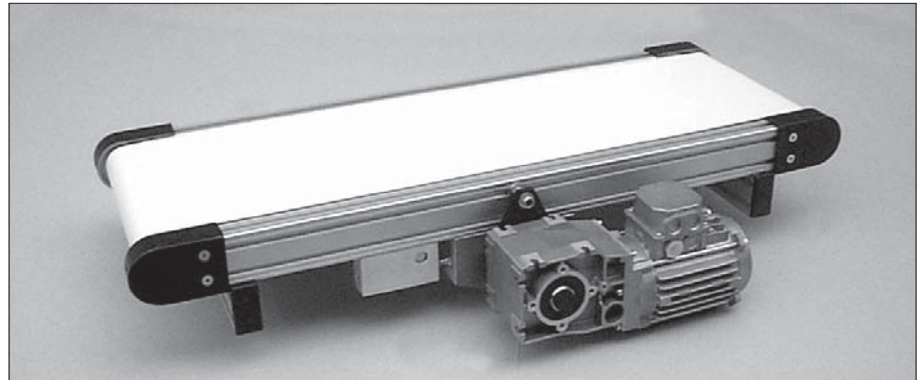
Pos.	Piece	Description	Order-No.
		Conveyor with centre drive complete	5.113.000.030030.43
1.0	1	Base frame assembly	5.113.110.030030.43
1.1	2	Profile 30x30, 4F	
1.2	2	Belt support plate, end piece, length according to specifications	
1.3	-	Belt support plate, L = 500 mm	
1.4	-	Belt support plate, L = 1,000 mm	
1.5	-	Belt support plate, L = 1,500 mm	
1.6	14	Cap-screw DIN 6912 - M6x20 with washer DIN 433 - 6.4	
1.7	12	T-Nut, FM6	
1.8	2	Hexagon nut DIN 934 - M6 with washer DIN 433 - 6.4	
2.0	1	Centre drive complete	5.113.120.030030.43
2.1	1	Drive roller Ø65	
2.2	1	Support spring A6x6x30	
2.3	2	Bench	
2.4	8	Cap-screw	
2.5	2	Tensioning block	
2.6	4	Cap-screw	
2.7	2	Hexagon screw	
2.8	1	Torque support	
2.9	4	Cap-screw	
2.10	1	Cap-screw	
2.11	12	T-Nut	
2.12	1	Geared motor	
2.13	1	Idling roller Ø38	
3.0	1	Drive roller assembly	5.113.130.030030.43
3.1	1	Idling roller Ø30	
3.2	1	Roller bracket	
3.3	8	Countersunk screw DIN 7991 - M6x12	
3.4	8	T-Nut, FM6	
3.5	4	Adjusting block	
3.6	4	Countersunk screw	
3.7	4	T-Nut	
3.8	4	Hexagon screw	
4.0	1	Support roller assembly	5.113.140.032
4.1	2	Mounting plate	
4.2	4	Cap-screw	
4.3	2	Countersunk screw	
4.4	4	T-Nut	
4.5	1	Support roller Ø32	

Remark

Belt support plate: Dependent on belt length
 Support roller: From 2,000 mm, 1 support roller /m



Conveyor with centre drive

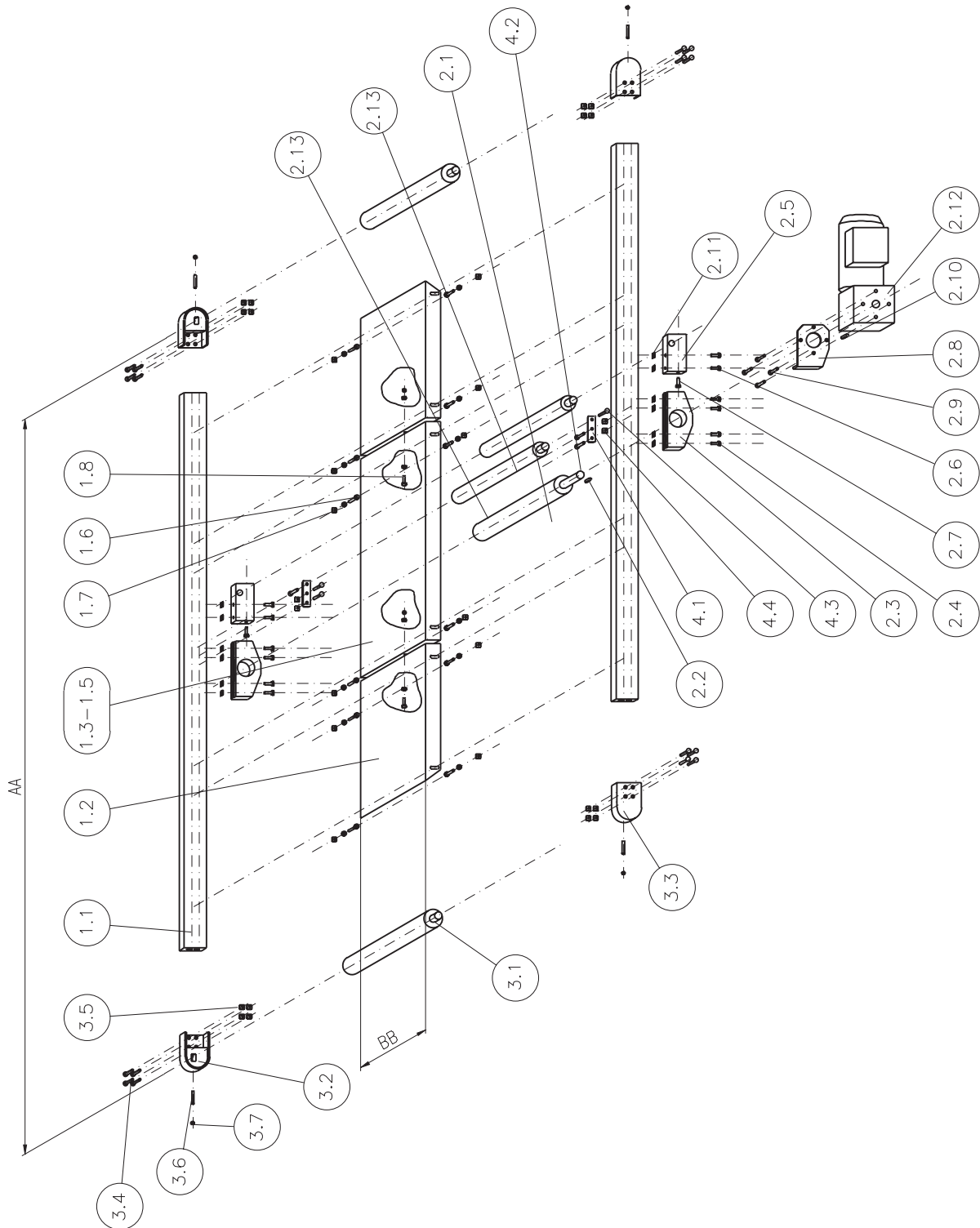


Technical data	
Base frame	Profile 30x60
Geared motor	
Length	AA = max. 6,000 mm
Belt width	GB = 200 / 250 / 300 / 350 / 400 / 450 / 500 / 550 / 600 mm
Belt speed	

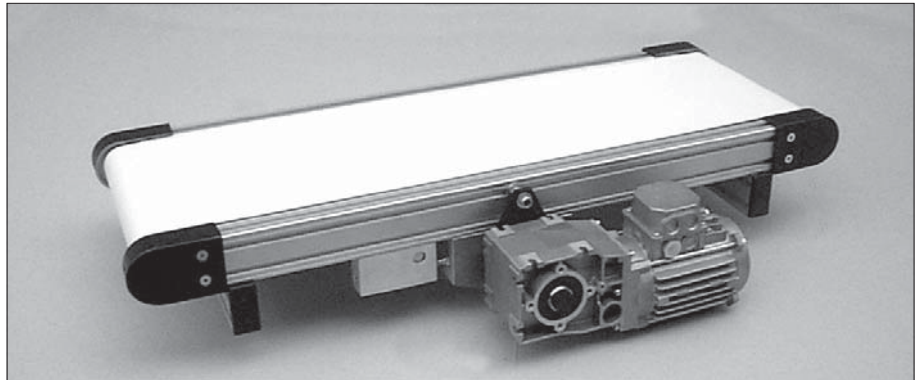
Pos.	Piece	Description	Order-No.
		Conveyor with centre drive complete	5.113.000.030060.65
1.0	1	Base frame assembly	5.113.110.030060.65
1.1	2	Profile 30x60, 6F	
1.2	2	Belt support plate, end piece, length according to specifications	
1.3	-	Belt support plate, L = 500 mm	
1.4	-	Belt support plate, L = 1,000 mm	
1.5	-	Belt support plate, L = 1,500 mm	
1.6	14	Cap-screw DIN 6912 - M6x20 with washer DIN 433 - 6.4	
1.7	12	T-Nut, FM6	
1.8	2	Hexagon nut DIN 934 - M6 with washer DIN 433 - 6.4	
2.0	1	Centre drive complete	5.113.120.030060.65
2.1	1	Drive roller Ø65	
2.2	1	Support spring A6x6x30	
2.3	2	Bench	
2.4	8	Cap-screw	
2.5	2	Tensioning block	
2.6	4	Cap-screw	
2.7	2	Hexagon screw	
2.8	1	Torque support	
2.9	4	Cap-screw	
2.10	1	Cap-screw	
2.11	12	T-Nut	
2.12	1	Geared motor	
2.13	1	Idling roller Ø38	
3.0	2	Drive roller assembly	5.113.130.030060.65
3.1	2	Idling roller	
3.2	2	Roller bracket, left	
3.3	2	Roller bracket, right	
3.4	16	Countersunk screw DIN 7991 - M6x12	
3.5	16	T-Nut, FM6	
3.6	4	Threaded pin	
3.7	4	Nut	
4.0	1	Support roller assembly	5.113.140.032
4.1	2	Mounting plate	
4.2	4	Cap-screw	
4.3	2	Countersunk screw	
4.4	4	T-Nut	
4.5	1	Support roller Ø32	

Remark

Belt support plate: Dependent on belt length
 Support roller: From 2,000 mm, 1 support roller /m



Conveyor with centre drive

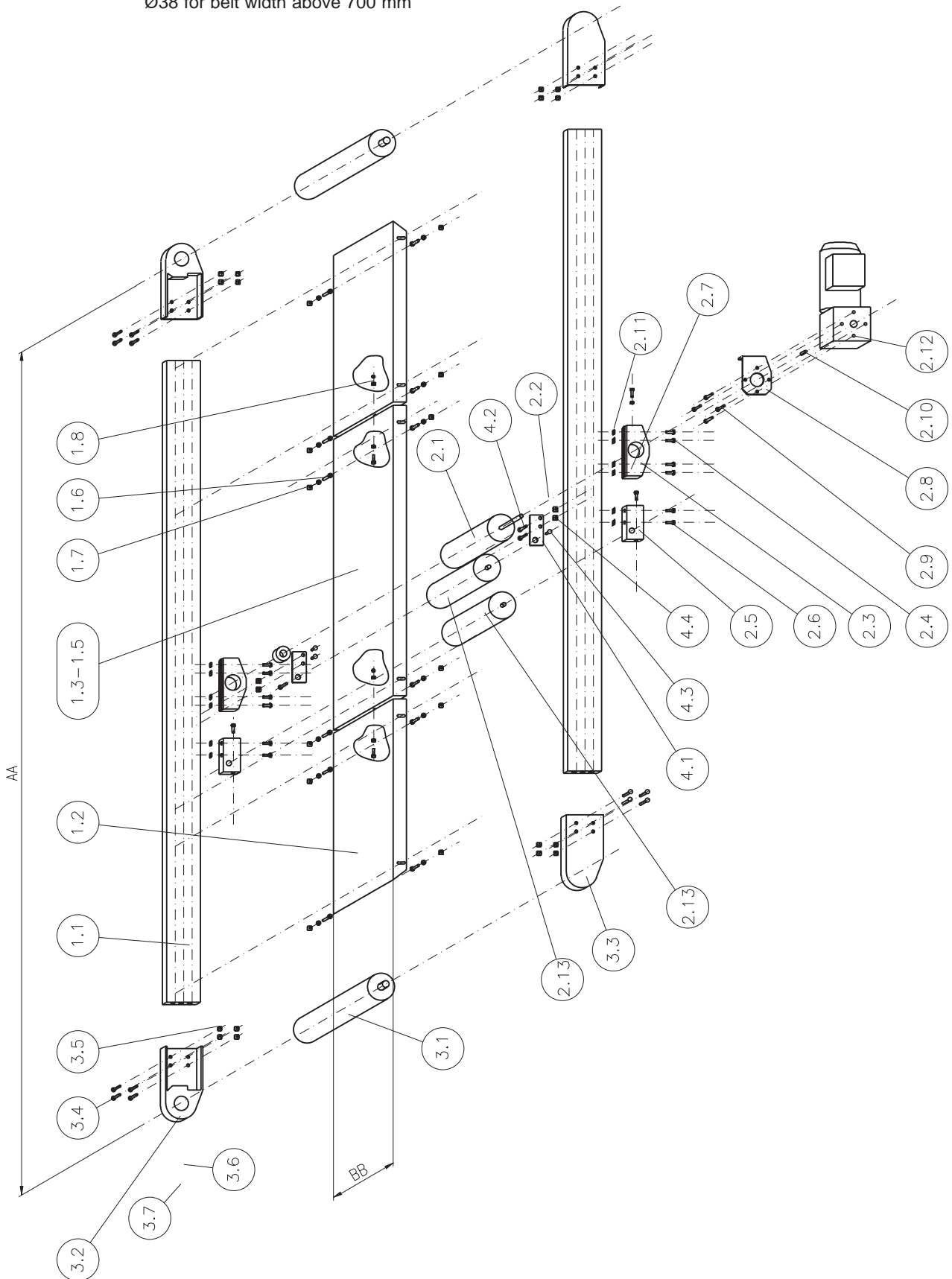


Technical data	
Base frame	Profile 30x100
Geared motor	
Length	AA = max. 12,000 mm
Belt width	GB = 200 / 250 / 300 / 350 / 400 / 450 / 500 / 550 / 600 / 650 / 700 / 750 / 800 / 850 / 900 / 950 / 1,000 mm
Belt speed	

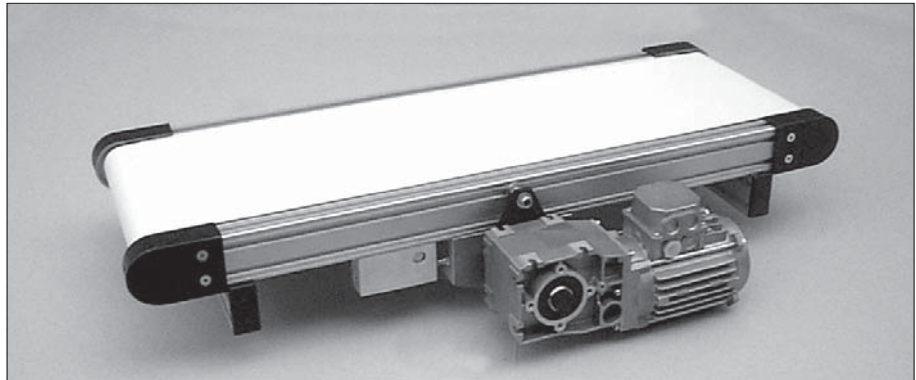
Pos.	Piece	Description	Order-No.
		Conveyor with centre drive complete	5.113.000.030100.84
1.0	1	Base frame assembly	5.113.110.030100.84
1.1	2	Profile 30x100, 8F	
1.2	2	Belt support plate, end piece, length according to specifications	
1.3	-	Belt support plate, L = 500 mm	
1.4	-	Belt support plate, L = 1,000 mm	
1.5	-	Belt support plate, L = 1,500 mm	
1.6	14	Cap-screw DIN 6912 - M6x20 with washer DIN 433 - 6.4	
1.7	12	T-Nut, FM6	
1.8	2	Hexagon nut DIN 934 - M6 with washer DIN 433 - 6.4	
2.0	1	Centre drive complete	5.113.120.030100.84
2.1	1	Drive roller Ø80	
2.2	1	Support spring A6x6x30	
2.3	2	Bench	
2.4	8	Cap-screw	
2.5	2	Tensioning block	
2.6	4	Cap-screw	
2.7	2	Hexagon screw	
2.8	1	Torque support	
2.9	4	Cap-screw	
2.10	1	Cap-screw	
2.11	12	T-Nut	
2.12	1	Geared motor	
2.13	1	Idling roller Ø50	
2.14	1	Idling roller Ø60	
3.0	2	Drive roller assembly	5.113.130.030100.84
3.1	2	Idling roller	
3.2	2	Roller bracket, left	
3.3	2	Roller bracket, right	
3.4	16	Countersunk screw DIN 7991 - M6x12	
3.5	16	T-Nut, FM6	
3.6	4	Threaded pin	
3.7	4	Nut	
4.0	1	Support roller assembly	5.113.140.0 □□
4.1	2	Mounting plate	
4.2	4	Cap-screw	
4.3	2	Countersunk screw	
4.4	4	T-Nut	
4.51	1	Support roller Ø32	
4.52	1	Support roller Ø38	

Remark

Belt support plate: Dependent on belt length
 Support roller: From 2,000 mm, 1 support roller /m
 Ø32 up to belt width 700 mm
 Ø38 for belt width above 700 mm



Conveyor with centre drive

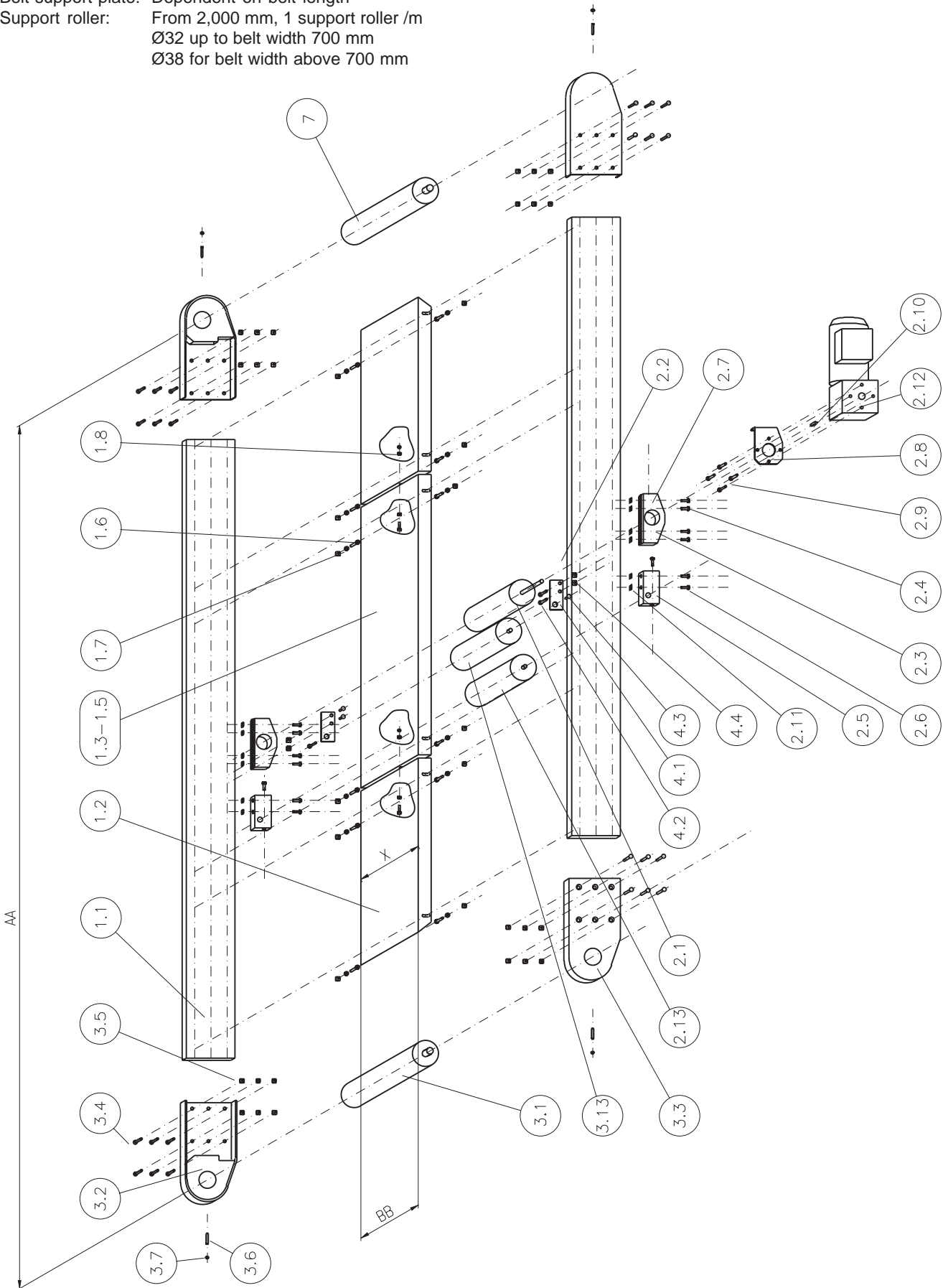


Technical data	
Base frame	Profile 30x150
Geared motor	
Length	AA = max. 12,000 mm
Belt width	GB = 700 / 800 / 900 / 1,000 / 1,100 / 1,200 / 1,300 mm
Belt speed	

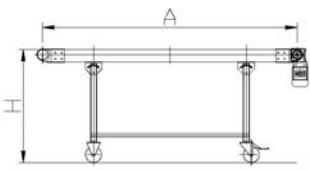
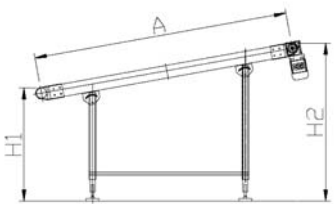
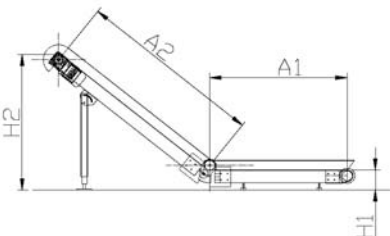
Pos.	Piece	Description	Order-No.
		Conveyor with centre drive complete	5.113.000.030150.85
1.0	1	Base frame assembly	5.113.110.030150.85
1.1	2	Profile 30x150, 8F, plan	
1.2	2	Belt support plate, end piece, length according to specifications	
1.3	-	Belt support plate, L = 500 mm	
1.4	-	Belt support plate, L = 1,000 mm	
1.5	-	Belt support plate, L = 1,500 mm	
1.6	13	Cap-screw DIN 6912 - M6x20	
1.7	12	T-Nut, FM6	
1.8	1	Hexagon nut DIN 934 - M6	
2.0	1	Centre drive complete	5.113.120.030150.85
2.1	1	Drive roller Ø122	
2.2	1	Support spring A6x6x30	
2.3	2	Bench	
2.4	8	Cap-screw	
2.5	2	Tensioning block	
2.6	4	Cap-screw	
2.7	2	Hexagon screw	
2.8	1	Torque support	
2.9	4	Cap-screw	
2.10	1	Cap-screw	
2.11	12	T-Nut	
2.12	1	Geared motor	
2.13	1	Idling roller Ø50	
2.14	1	Idling roller Ø60	
3.0	2	Drive roller assembly	5.113.130.030150.85
3.1	2	Idling roller Ø122	
3.2	2	Roller bracket, left	
3.3	2	Roller bracket, right	
3.4	16	Countersunk screw DIN 7991 - M6x12	
3.5	16	T-Nut, FM6	
3.6	4	Threaded pin	
3.7	4	Nut	
4.0	1	Support roller assembly	5.113.140.0 □□
4.1	2	Mounting plate	
4.2	4	Cap-screw	
4.3	2	Countersunk screw	
4.4	4	T-Nut	
4.51	1	Support roller Ø32	
4.52	1	Support roller Ø38	

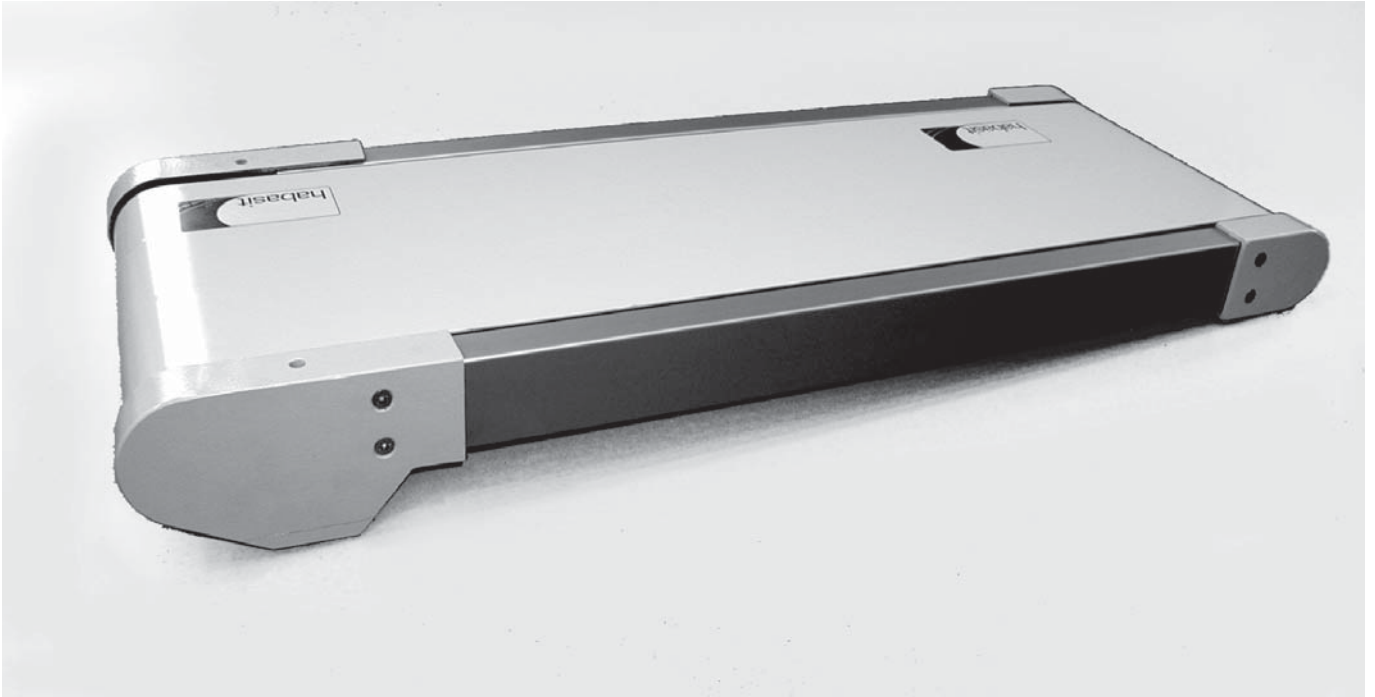
Remark

Belt support plate: Dependent on belt length
 Support roller: From 2,000 mm, 1 support roller /m
 Ø32 up to belt width 700 mm
 Ø38 for belt width above 700 mm



Company	Project:
	Number required:
	Preferred delivery date:

Conveyor type	Profile height for base frame: <input type="checkbox"/> 30 <input type="checkbox"/> 60 <input type="checkbox"/> 100 <input type="checkbox"/> 150
	Drive: <input type="checkbox"/> external gearbox and motor <input type="checkbox"/> centre drive <input type="checkbox"/> driven roller
	Belt direction from motor side: <input type="checkbox"/> left <input type="checkbox"/> right
	Shaft spacing: A = mm A1 = mm A2 = mm
	Conveyor practical width: mm
	Conveyor speed: m/s
	Speed control: <input type="checkbox"/> yes <input type="checkbox"/> no
	Motor protection: <input type="checkbox"/> yes <input type="checkbox"/> no
	Belt support plate: <input type="checkbox"/> yes <input type="checkbox"/> no hight: mm adjustable: from mm to mm
	Sub frame assembly: <input type="checkbox"/> yes <input type="checkbox"/> no transport height: mm adjustable: from mm to mm H1= mm H2= mm
	Frame supported by: <input type="checkbox"/> feet <input type="checkbox"/> rollers
	Description of goods to be transported: expected weight: kg/m <input type="checkbox"/> surface load <input type="checkbox"/> single point Description: (material, surface, form, temperature, etc.) <hr/> <hr/>
	Requirements for belt type: (non slip, smooth, high grip, food grade, antistatic or type specification, other) <hr/> <hr/>



Conveyor for clean-room technology

Imprint

Subject to technical modification.

All rights reserved.

Copying - also in parts - only allowed
by written consent.

© MayTec Aluminium Systemtechnik GmbH,
Dachau, 2002



Australia

MayTec Australia P/L

Unit 1, 8 Prosperity Parade
Warriewood, NSW 2102

country code +61
phone (0) 2 / 9999 0890
fax (0) 2 / 9979 8703
e-mail: info@maytec.com.au
<http://www.maytec.com.au>

Germany

MayTec Aluminium
Systemtechnik GmbH
Kopernikusstraße 20
D - 85221 Dachau

country code +49
phone (0) 8131 / 33 36 - 0
fax (0) 8131 / 33 36 - 119
e-mail: mail@maytec.de
<http://www.maytec.de>

USA

MayTec Inc.

1625 Dundee Ave., Unit E-F
Elgin, IL 60120

country code +1
phone 847 - 429 - 0321
fax 847 - 429 - 0460
e-mail: mail@maytecinc.com
<http://www.maytecinc.com>