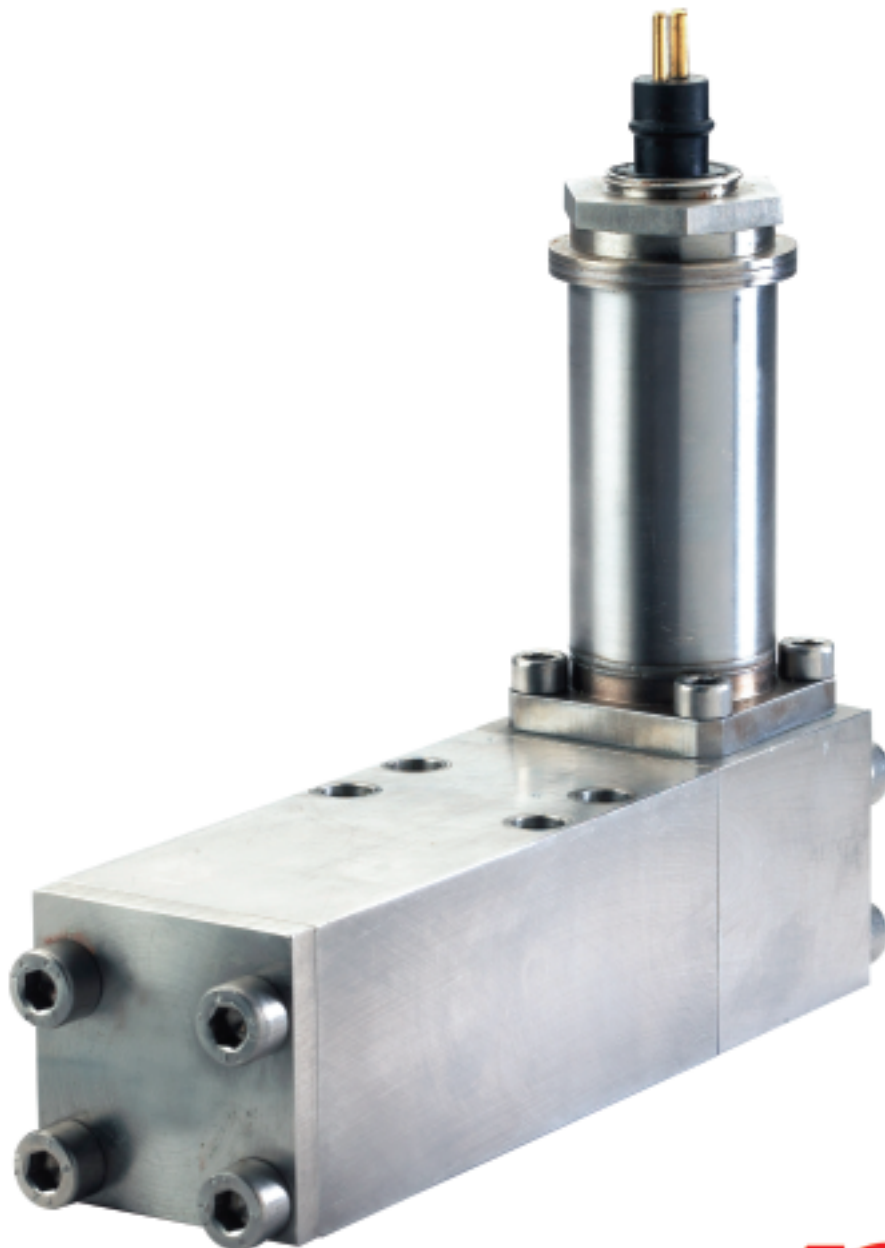


Hydraulic Subsea Solenoid Valve **DN10**

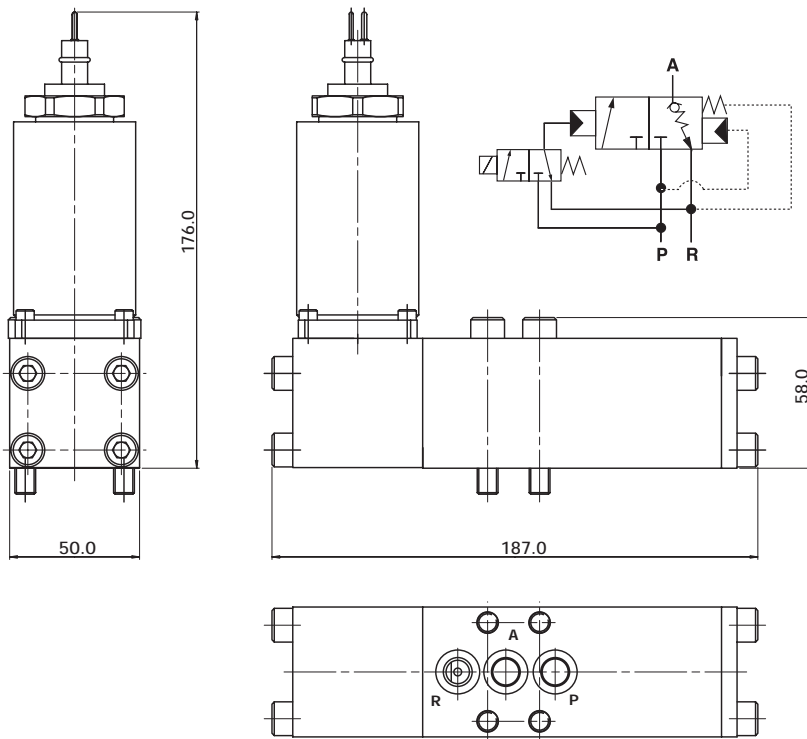
- Specially Designed for Direct Subsea Immersion
 - Low Power Consumption
- 316 Stainless Steel Construction
 - 690 Bar Max



DN10 Hydraulic Subsea Solenoid Valve

Various types of subsea solenoid valves are currently installed in subsea pods. ACS have developed a valve for direct seawater immersion, therefore eliminating the need for expensive pods.

Total Weight: 3.8 kg



All dimensions are in millimeters

OTHER ACS PRODUCTS:

- Stainless steel valves
- Electro-hydraulic control systems
- Emergency shutdown and failsafe control systems
- Subsea valves
- Solenoid operated hydraulic valves

FEATURES AND SPECIFICATIONS:

- 316 Stainless steel construction
- 3 port, 2 positions, normally closed spring return
- Low powered, solenoid pilot operated
- Maximum operating pressure, 690 bar
- Maximum external pressure, 345 bar
- Nominal flowrate 40 litre per minute
- Suitable for use with mineral oil and water-glycol type fluids
- 24 V DC
- 13 Watts
- IP 68
- Metal to metal seats
- Block before bleed function
- Suitable for subplate or manifold mounting
- Easy to install

Actuator Control Systems (ACS)
(division of International Motion Control Ltd.)
Patrick Gregory Road
Wolverhampton, West Midlands
WV11 3DZ United Kingdom
Tel: +44 (0) 1902 305678
Fax: +44 (0) 1902 305676
Email: dtw@imc-uk.com
www.actuatorcontrolsystems.com

