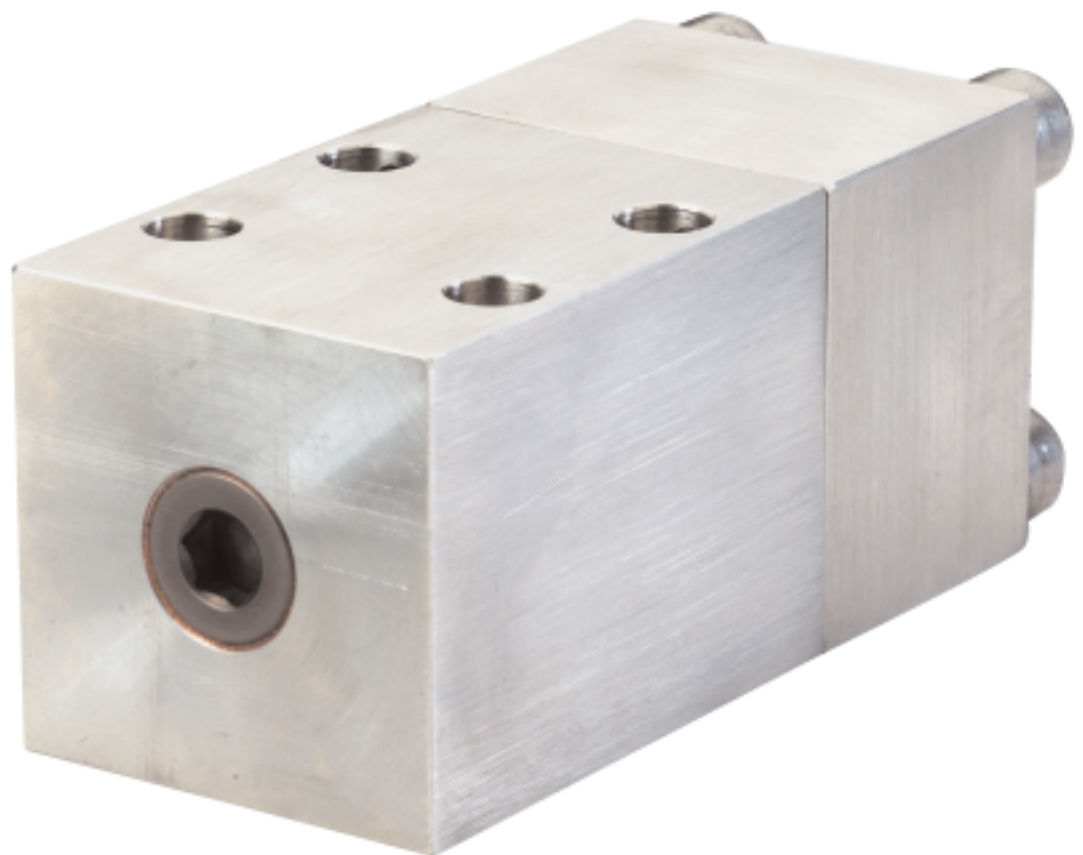


Hydraulic Pilot Operated Valve **DN3**

NEW ADDITION High Pressure Downhole Control Valve

- Specifically Designed for Offshore Severe Environments
 - 1,000 bar Operating Pressure
 - 316 Stainless Steel Construction



DN3 Hydraulic Pilot Operated Valve

NEW ADDITION HIGH PRESSURE DOWNHOLE CONTROL VALVE

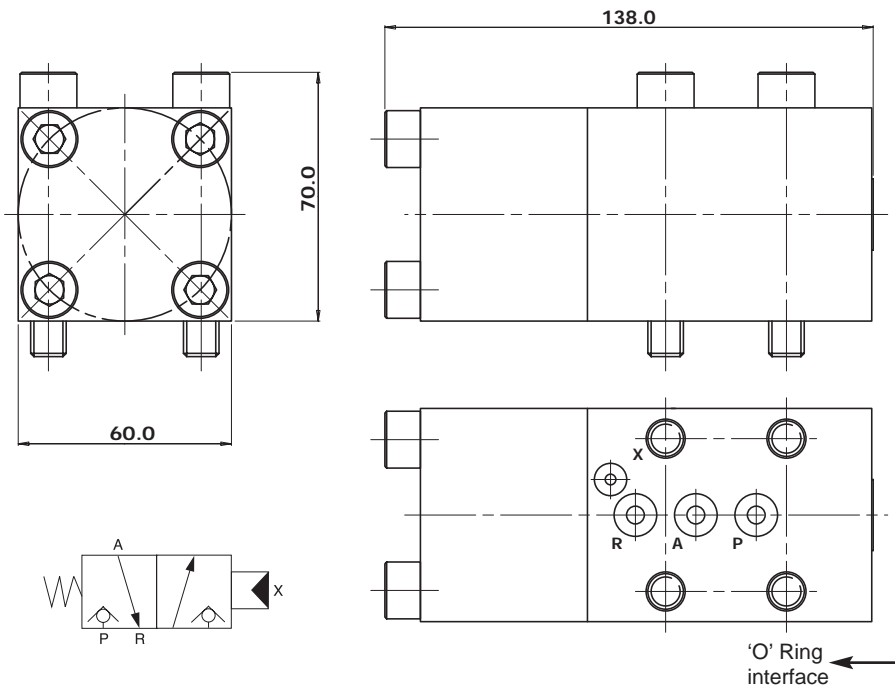
We have extended our range of high pressure valves for wellhead control applications from 690 bar to 1,000 bar. The valve has been developed to meet the ever increasing demands for deep well installations.

The valve is directly pilot operated from a lower pressure supply (210/345 bar) and will operate at 1,000 bar. The valve is suitable for both mineral oils and high water based fluids. A solenoid operated version will soon be available with integral solenoid pilot valve to operate from an external pilot supply (210/345 bar).

FEATURES:

- 316 Stainless steel construction
- 1,000 bar max operating pressure
- 1,500 bar static test pressure
- Ceramic ball, stainless steel seat design
- 3 port, 2 positions, normally closed, spring return
- Leak tight
- Direct pilot operated
- Pilot pressure range 210/345 bar
- Nominal flowrate 2 litre per minute
- IP66
- Ambient temperature range -20°C +80°C
- Suitable for subplate or manifold mounting
- Easy to install

Total Weight: 3.4 kg



All dimensions are in millimeters

OTHER ACS PRODUCTS:

- Electro-hydraulic valve actuator control systems
- Emergency shutdown and failsafe control panels
- Subsea valves
- Solenoid operated hydraulic valves for group 1 mining

Actuator Control Systems (ACS)
(division of International Motion Control Ltd.)
Patrick Gregory Road
Wolverhampton, West Midlands
WV11 3DZ United Kingdom
Tel: +44 (0) 1902 305678
Fax: +44 (0) 1902 305676
Email: dtw@imc-uk.com
www.actuatorcontrolsystems.com

