

VHLA Series Rotary Hand Valves

1/4", 3/8", and 1/2" NPT porting



- Aluminum die casting design for heavy applications**
- Detented center position**
- Easy to grasp and rotate handle**
- Cv's of 0.4 to 3.1**
- Port sizes of 1/4", 3/8", and 1/2"**
- 2 or 3 position functions available**

Order information

| Port Size | Function | Model Number |
|-----------|-------------------|--------------|
| 1/4" | 3 position, 4-way | VHLA200-02 |
| 1/4" | 2 position, 4-way | VHLA202-02 |
| 3/8" | 3 position, 4-way | VHLA300-03 |
| 3/8" | 2 position, 4-way | VHLA302-03 |
| 1/2" | 3 position, 4-way | VHLA400-04 |
| 1/2" | 2 position, 4-way | VHLA402-04 |

Technical Data

Fluid: Compressed air

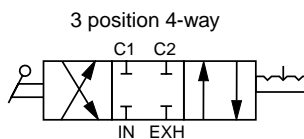
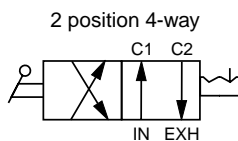
Maximum operating pressure: 140 psi (9.7 bar)

Temperature Range: 40° to 140°F* (5° to 60°C).

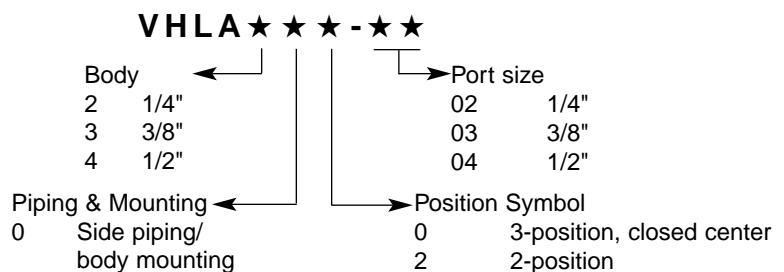
*With a dew point of supply air less than air temperature below 35°F (2°C).

| Flow: | 1/4" | Cv 0.4 |
|-------|------|--------|
| | 3/8" | Cv 1.1 |
| | 1/2" | Cv 3.1 |

Materials of Construction
Body: Die cast aluminum



Options Selector

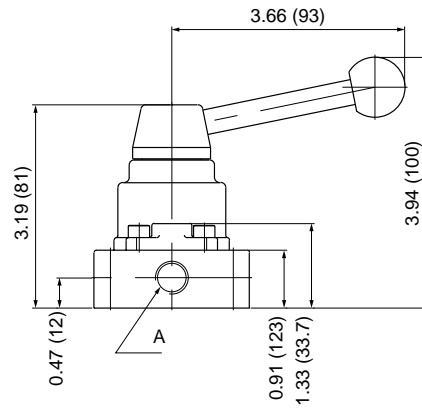
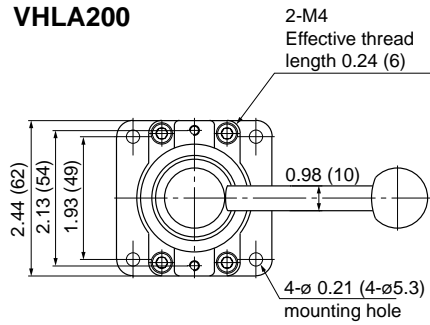




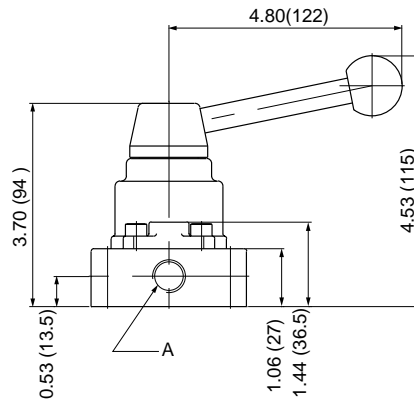
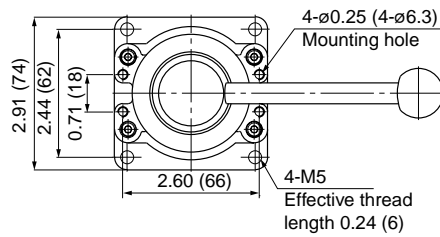
VHLA Series Rotary Hand Valves

All Dimensions in Inches (mm)

VHLA200



VHLA300



VHLA400

